



# ALP-raw Astra Linux

- [ALP-raw](#)
- [ALP-raw](#)
- [ALP-raw](#)
  - [virt-manager](#)
  - [VirtualBox](#)
  - 
  -
- 
- 
- [read-only](#) .
- [ALP-raw](#) [USB-](#), [Rutoken flash](#), [Jakarta flash](#)
- [ALP-raw](#) .

 :

- [Astra Linux Special Edition .10015-01 \( 1.7\)](#)
- [Astra Linux Special Edition .10015-01 \( 1.6\)](#)
- [Astra Linux Special Edition .10015-16 . 1](#)
- [Astra Linux Common Edition 2.12](#)

 .:

- [USB flash drive](#)
- [ALP-live \(Live-CD/Live-USB\) Astra Linux](#)

## ALP-raw

ALP-raw (Astra Linux Portable) — Astra Linux Special Edition ( . [ASTRA LINUX PORTABLE](#) — [ASTRA LINUX SPECIAL EDITION](#)). ALP-raw [ALP-live](#) , [Live-CD/Live-USB Astra Linux](#) , :

- ;
- (ALP-live - );
- , ALP-raw c (ALP-live .. squashfs);

ALP-raw Legacy EFI.

ALP-raw , (swap). , , .

## ALP-raw

ALP-raw Astra Linux Special Edition . , ( ).

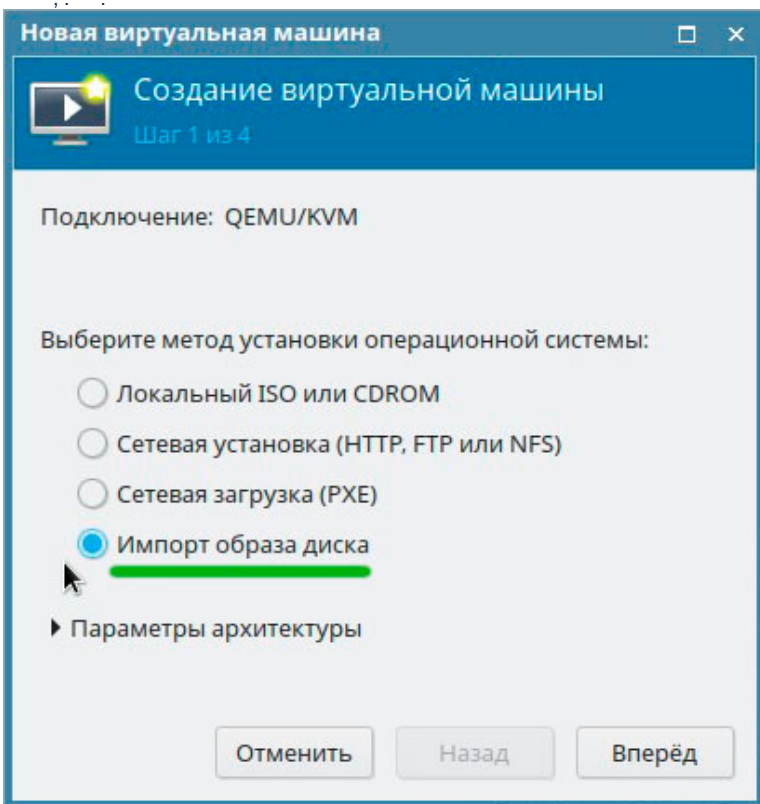
## ALP-raw

### virt-manager

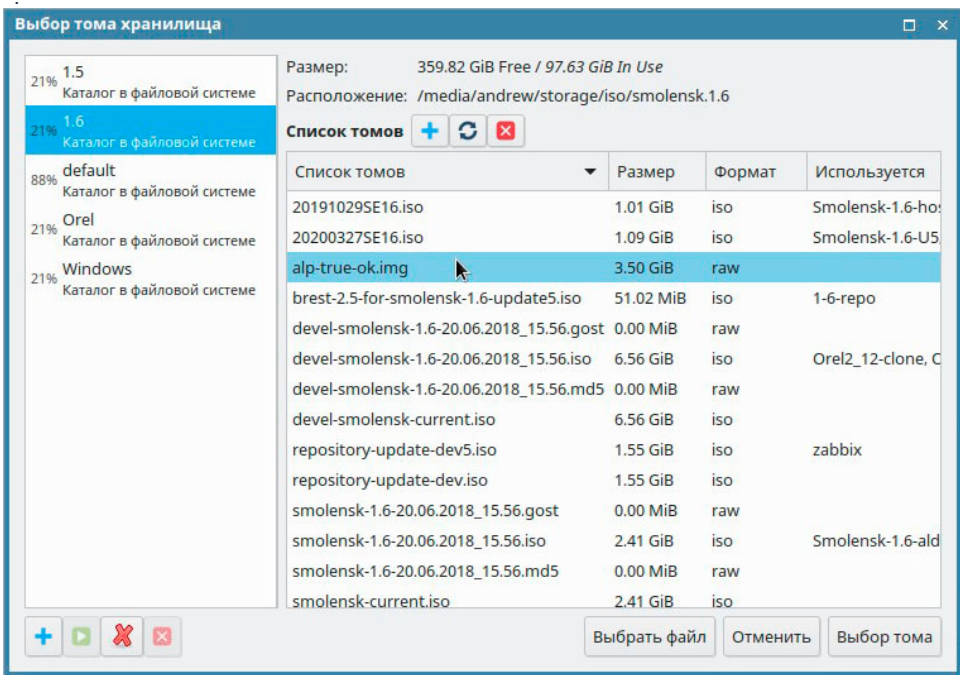
ALP-raw KVM :

1. KVM;

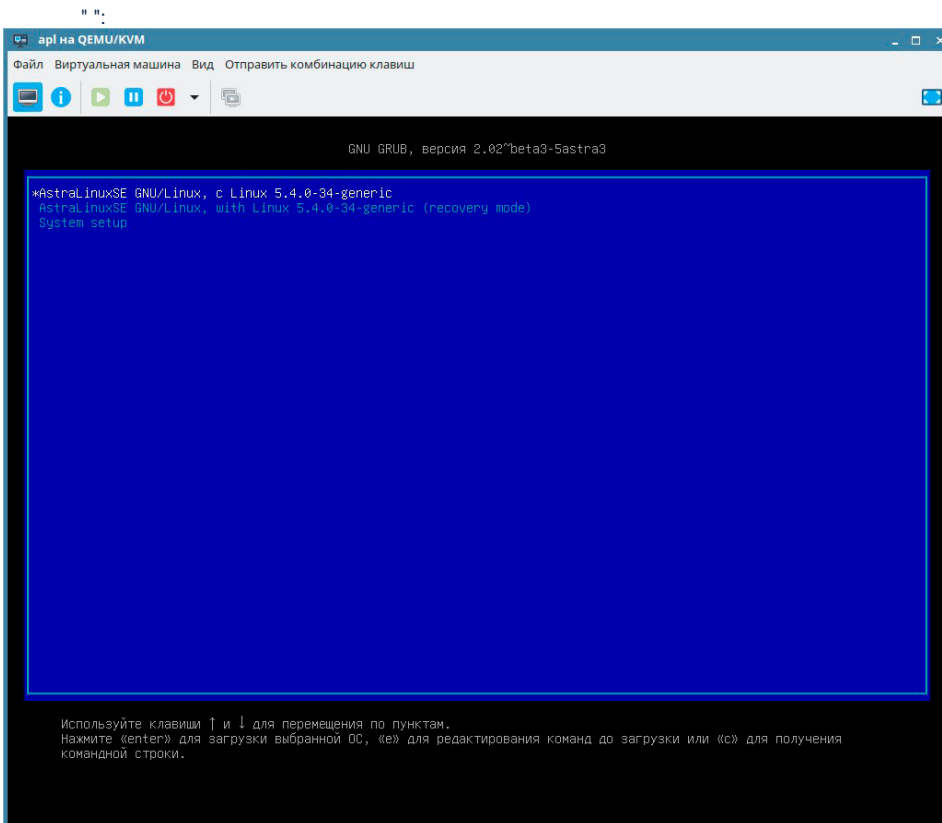
2. : " " :



3. :



4.

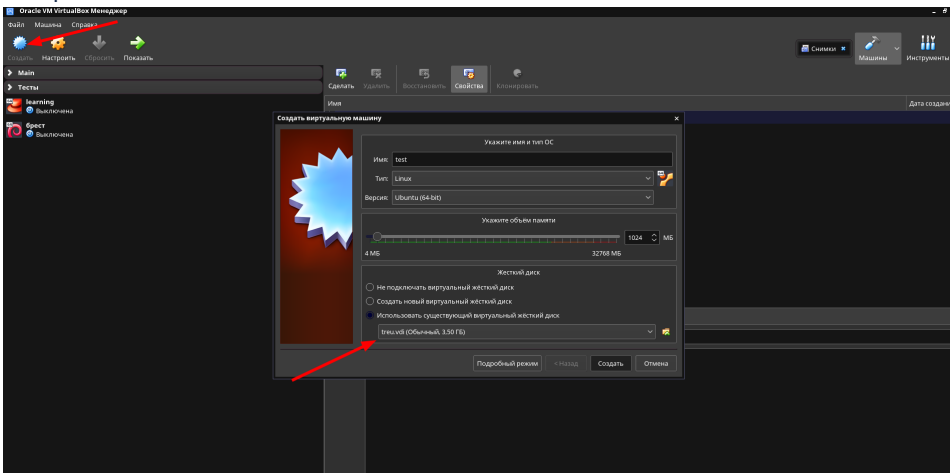


## VirtualBox

1. APL-, VirtualBox VDI. :

```
VBoxManage convertdd input.img output.vdi
```

2.



ALP-raw :

1. ALP- , , USB-flash ( );
2. , ;
3. BIOS, , .

ALP- .

CD-ROM Astra Linux Special Edition :

```
sudo apt-cdrom add
```

, :

```
sudo apt install _
```

synaptic. :

- Astra Linux
- 

, deb- :

```
sudo apt install ./__1 ./__2 ./__3
```

Live-, Live-CD Astra Linux Common Edition: .  
, [Gparted Live](#), Ubuntu .. ( gparted) .

## read-only .

ALP-raw read-only astra-overlay. initrd overlays over tmpfs . , , . - , , /home.

## astra-overlay NetworkManager

1. astra-overlay Astra Linux Special Edition .10015-01 ( 1.6) [20190912SE16 \( 3\)](#) , ( , );
2. /home/system-connections:

```
sudo mkdir /home/system-connections
```

3. astra-overlay ( sudo astra-overlay status ) /etc/fstab, ( ):

```
/home/system-connections /etc/NetworkManager/system-connections none bind 0 0
```

/etc/NetworkManager/system-connections ( ) /home/system-connections ( ). - /etc/NetworkManager/system-connections /home/system-connections.

4. :

```
sudo mount -a
```

5. astra-overlay :

```
sudo astra-overlay enable
```

6. . . . Wi-Fi, . . . Wi-Fi (SSID) .

## ALP-raw USB-, Rutoken flash, Jacarta flash

ALP-raw USB- dd:

```
sudo dd if=/path/to/raw.img of=/dev/_____
```

"/path/to/raw.img" - raw-, USB-, . . . :

```
lsblk
```

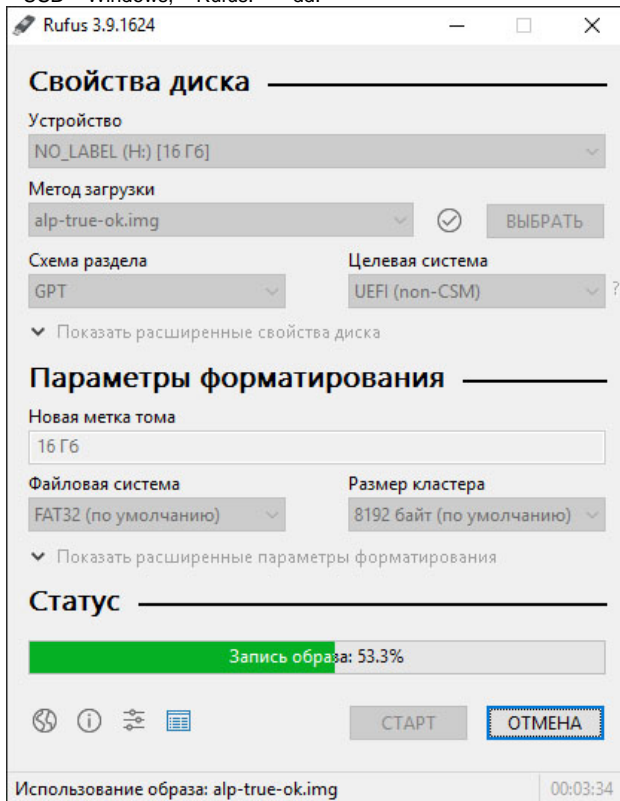
. status=progress - . - ( ).

bs=value . value 16K, 1M, 4M - . . , 8GB , bs=4M. - . .

:

```
sudo dd if=/path/to/raw.img of=/dev/sdz status=progress bs=4M
```

USB- Windows, Rufus. dd.



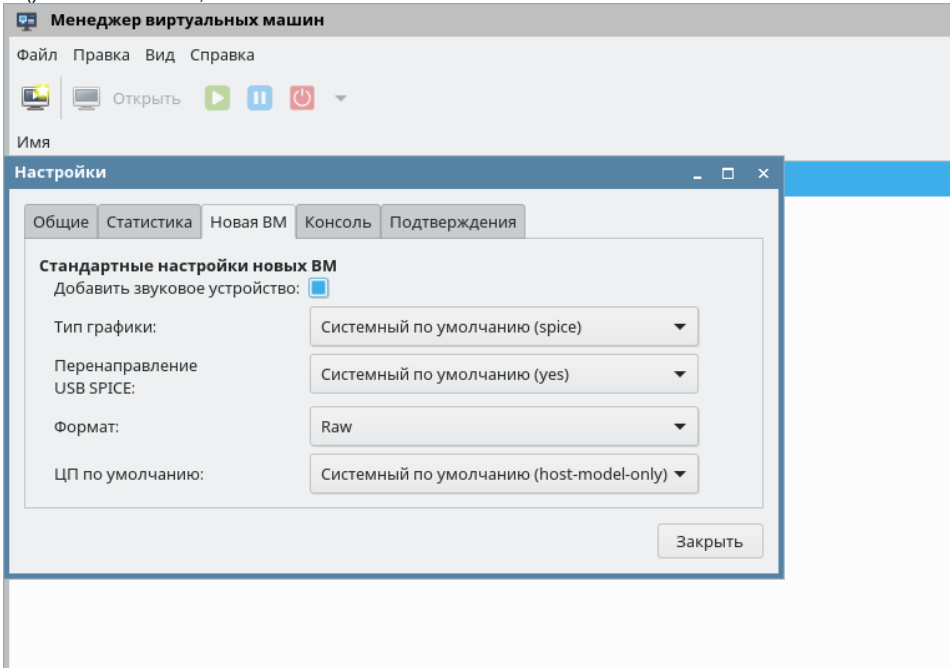
## ALP-raw .

ALP-raw virt-manager.

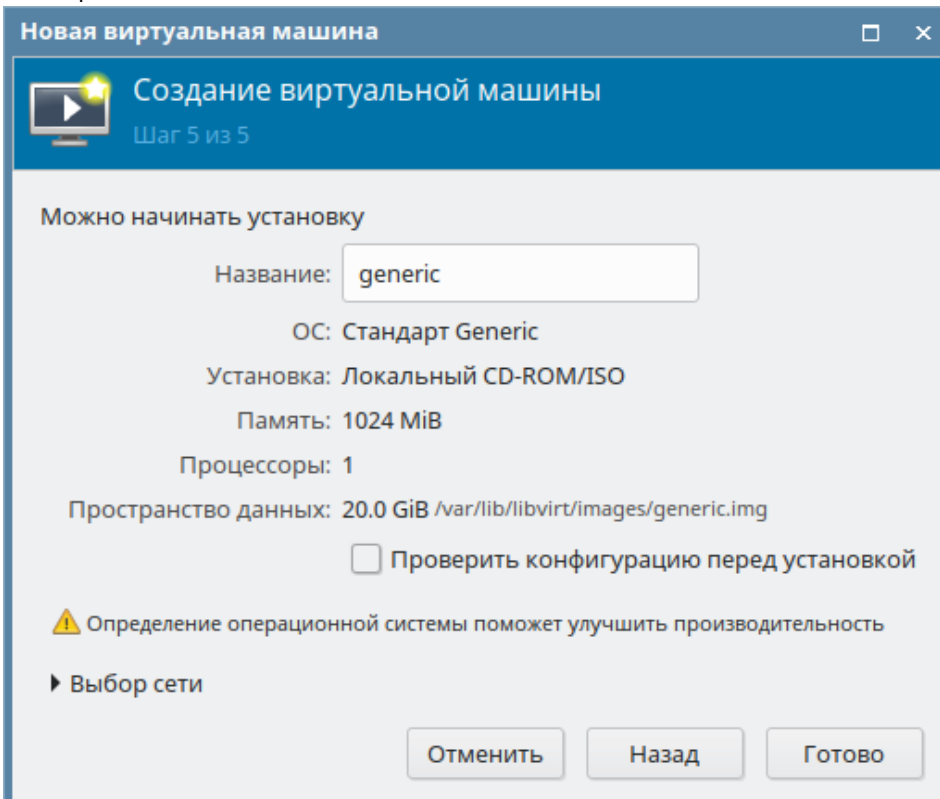
1. , , ovmf UEFI- . <https://packages.debian.org/stretch/ovmf>.

```
wget http://ftp.de.debian.org/debian/pool/main/e/edk2/ovmf_0~20161202.7bbe0b3e-1+deb9u1_all.deb  
sudo apt install ./ovmf_0~20161202.7bbe0b3e-1+deb9u1_all.deb
```

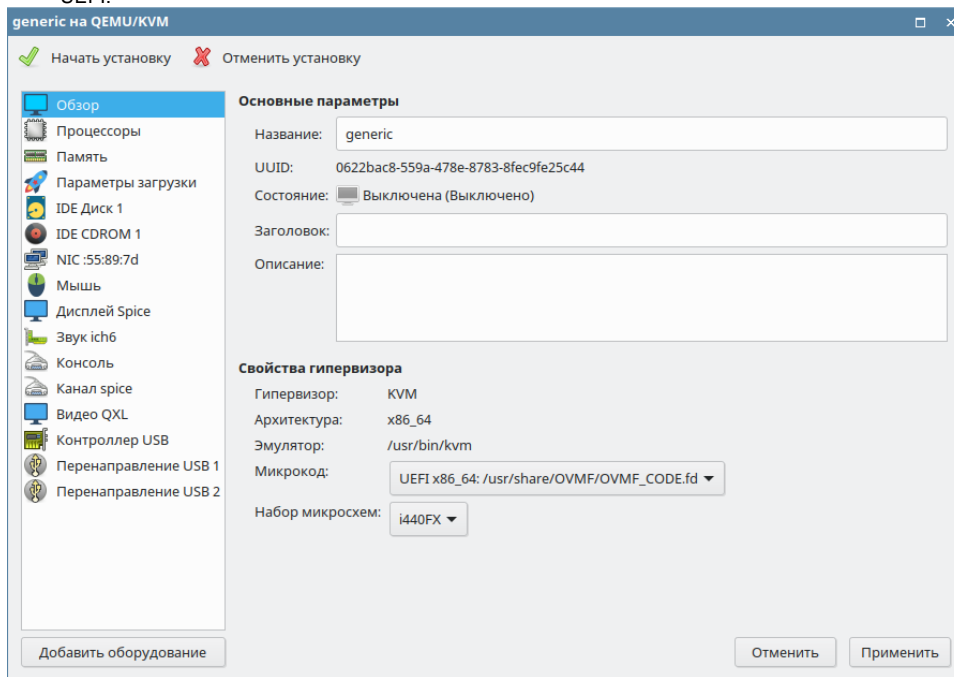
2. () "Raw". "" "", "" "" "Raw":



3. " "":



4. "" UEFI:



5. .

6. 3 :
- a. 1. grub-pc Legacy;
  - b. ESP. grub ;
  - c. (root).

7. ;

8. ;

9. grub-pc-bin gparted:

```
sudo apt install grub-pc-bin gparted
```

10. gparted, bios\_grub ;

11. grub :

```
sudo grub-install --target=i386-pc /dev/sda
```

Legacy EFI.

, bios\_grub.