

# x2go

- - [x2go](#)
  - [x2go Windows](#)
  - [x2go](#)



:

- Astra Linux Special Edition .10015-01 ( 1.7)
- Astra Linux Special Edition .10015-01 ( 1.6) ([Astra Linux Common Edition](#))
- Astra Linux Special Edition .10015-16 . 1 ([Astra Linux Common Edition](#))
- Astra Linux Common Edition 2.12.19



x2go - Linux , NX technology. X2Go Linux.  
Linux Windows.

ssh.

x2go - . , ( . : [TeamViewer](#)), .

x2go: <https://wiki.x2go.org/>

windows: <https://wiki.x2go.org/doku.php/doc:installation:x2goclient>

x2go: <https://wiki.x2go.org/doku.php/wiki:repositories:debian>

x2goserver Astra Linux Common Edition (. [synaptic](#)) :

```
sudo apt install x2goserver
```



x2go, . , x2go :

- /etc/systemd/logind.conf :  
KillUserProcesses=no
- .

## x2go

x2go :

- x2goserver-printing
- cups-x2go.

::

```
sudo apt install x2goserver x2goserver-printing cups-x2go
```

x2go Virtual\_X2Go\_printer.

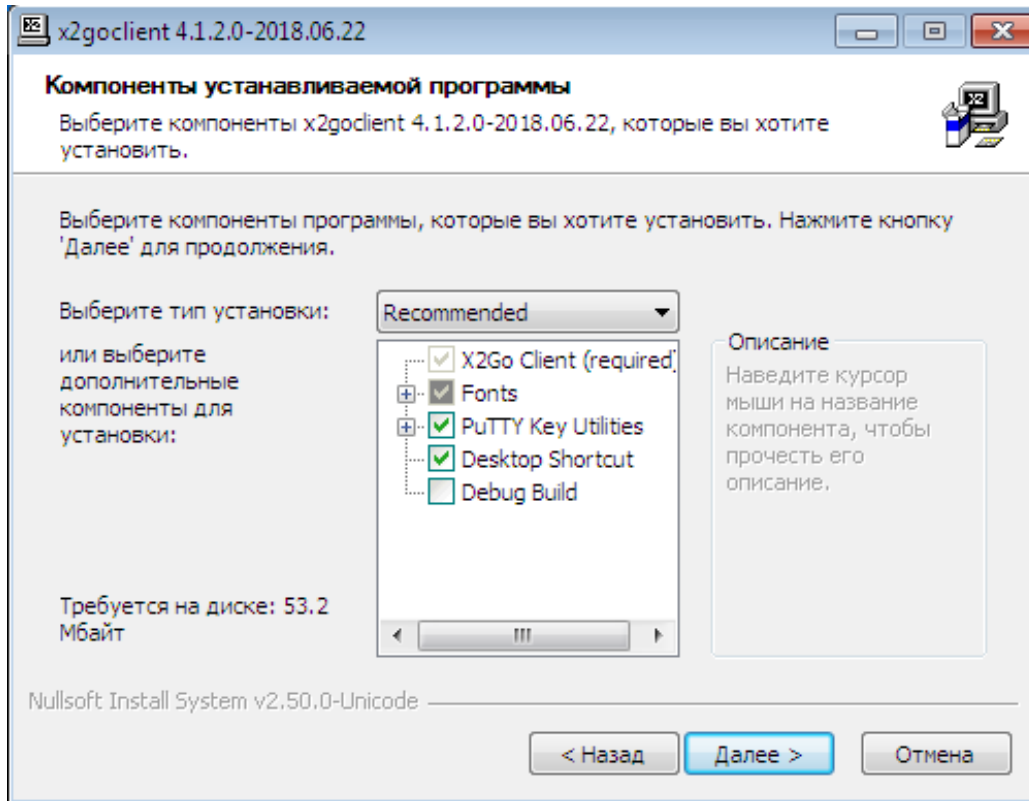
## x2go Windows



Windows !

. x2go Windows.

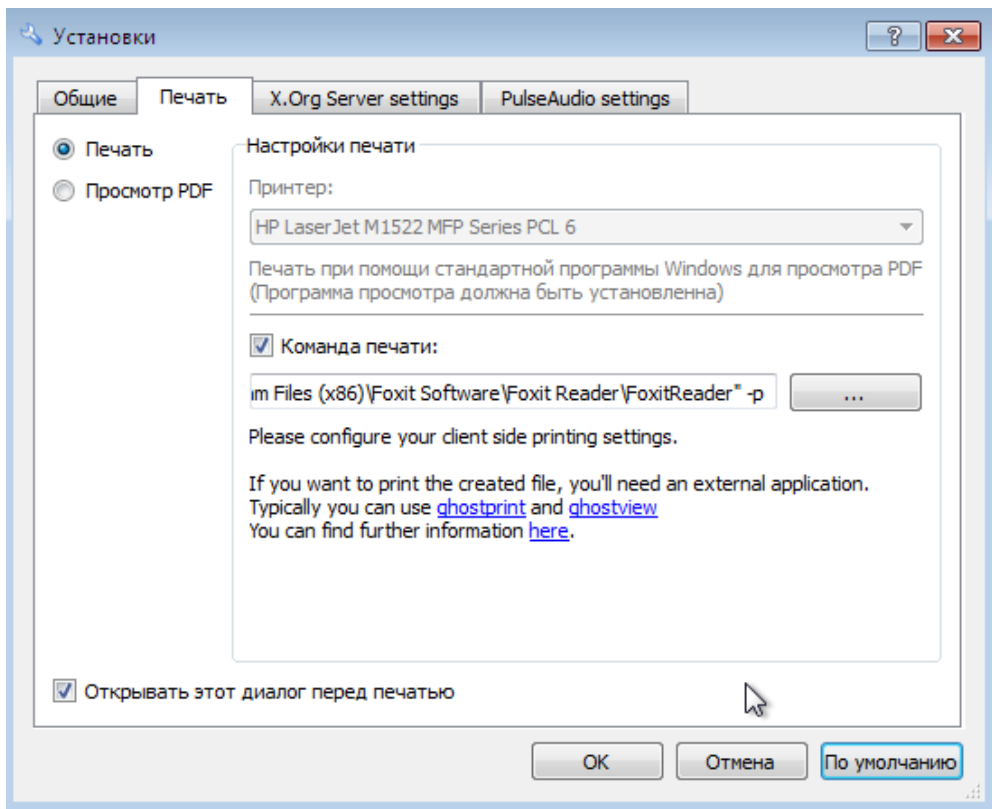
, "Recommended":



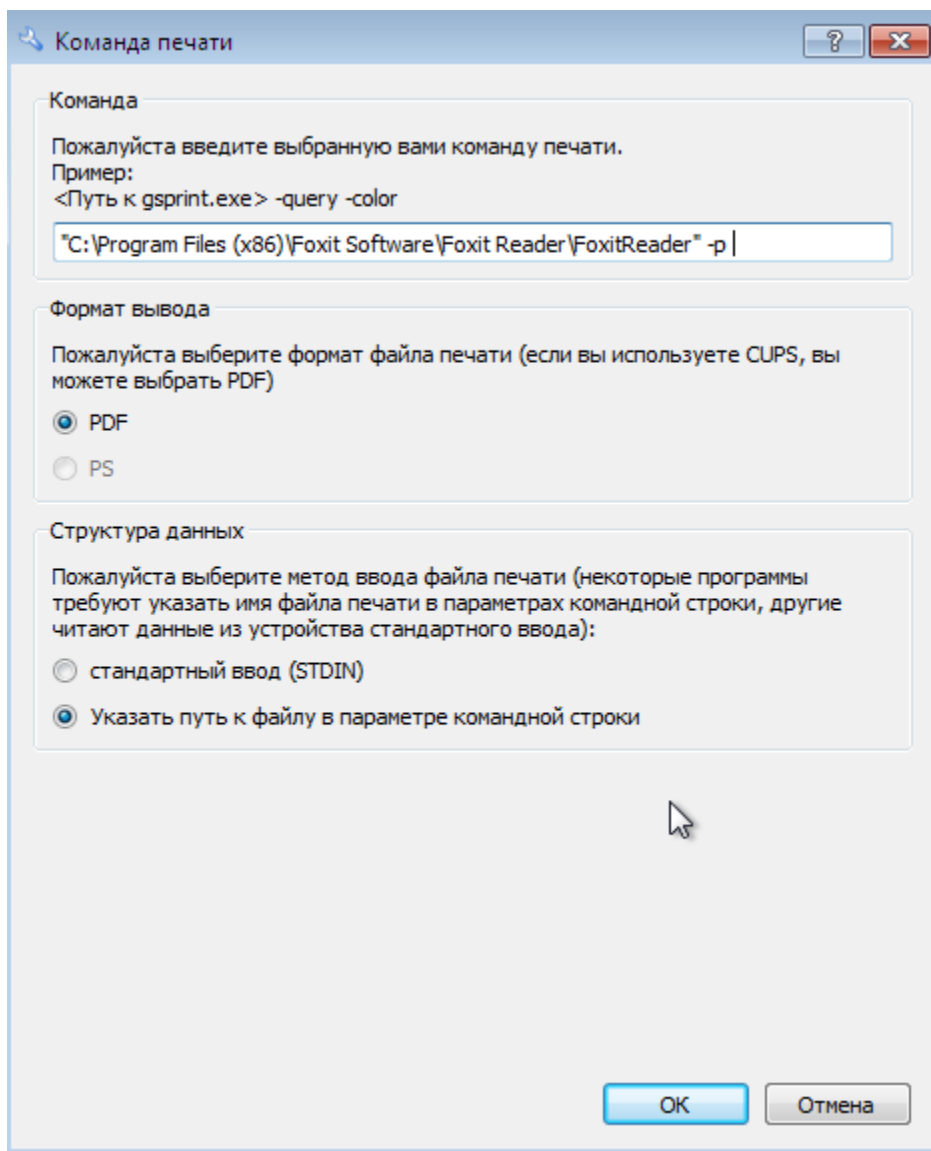
, PDF. [Foxit Reader](#).

x2go . "" - "", ""

"..."



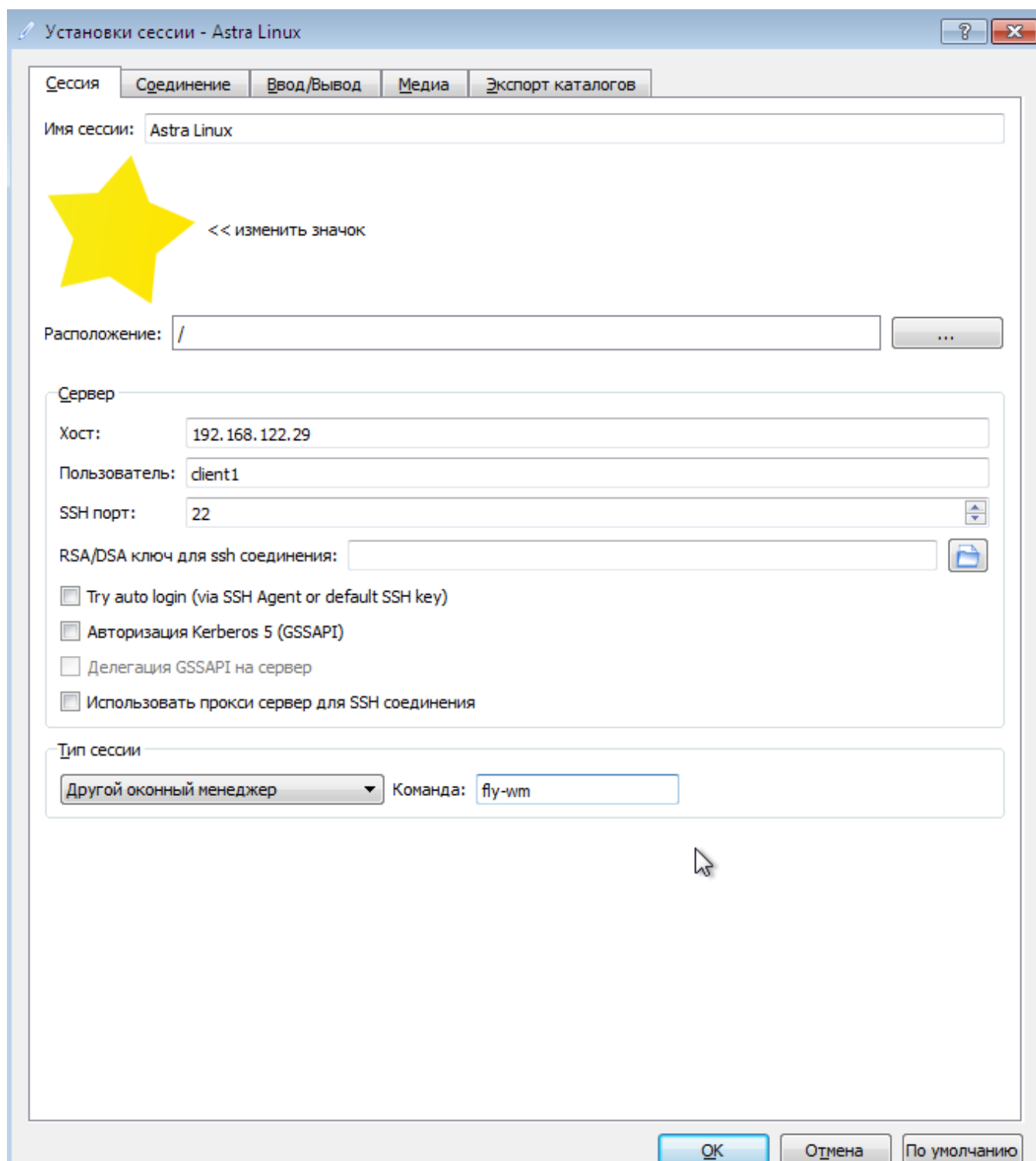
( Foxit Reader "-", PDF, - " "



x2go

2go " "

:

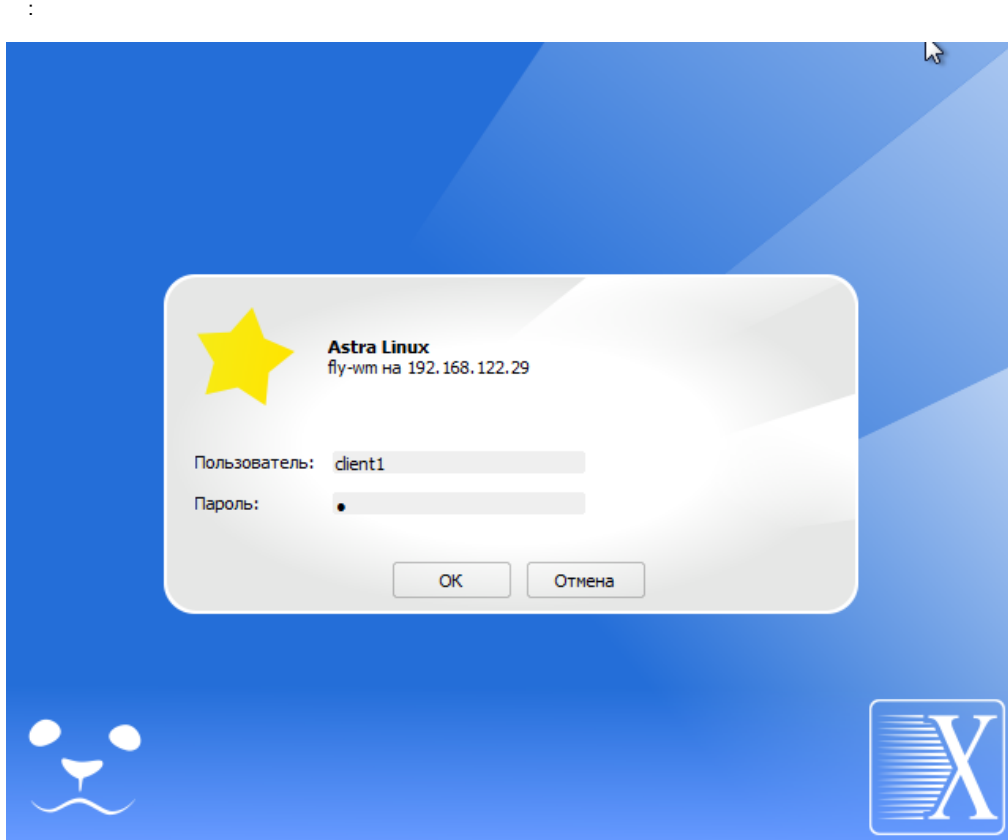
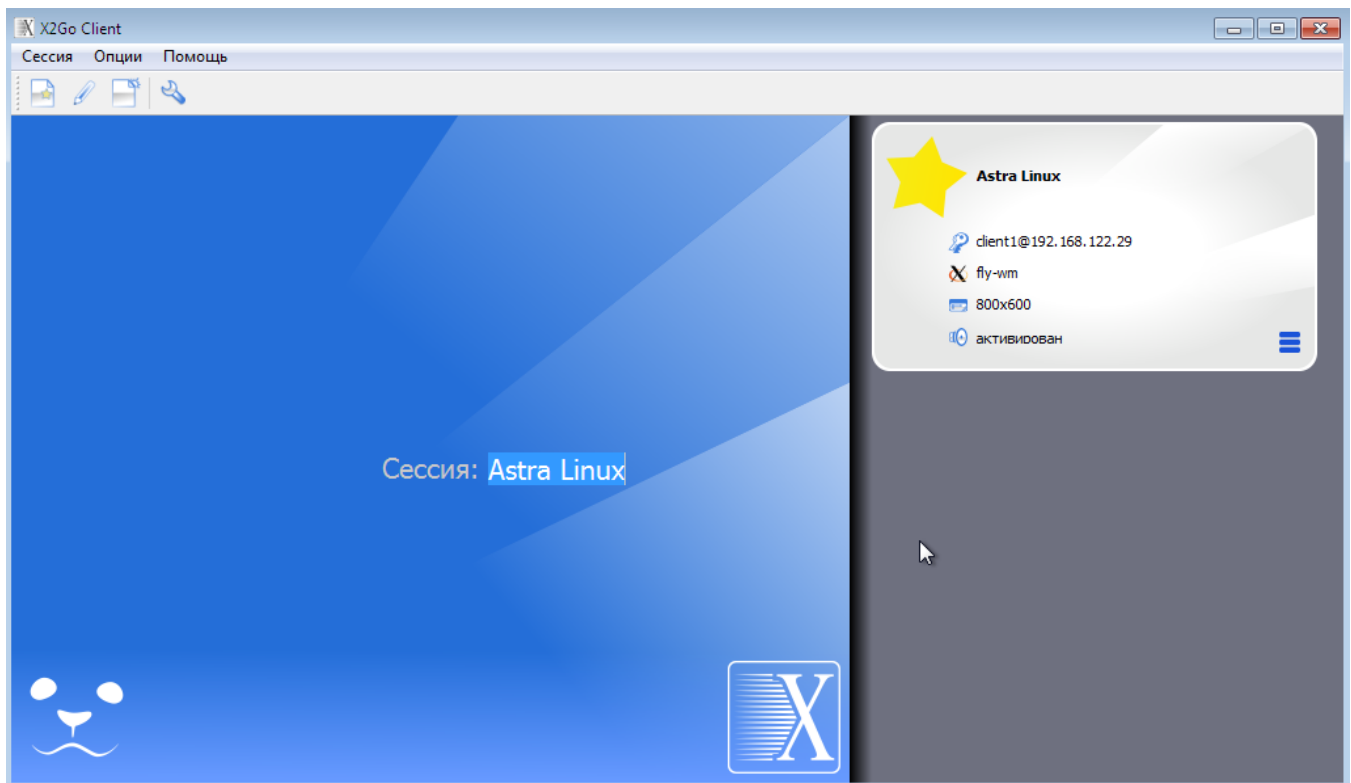


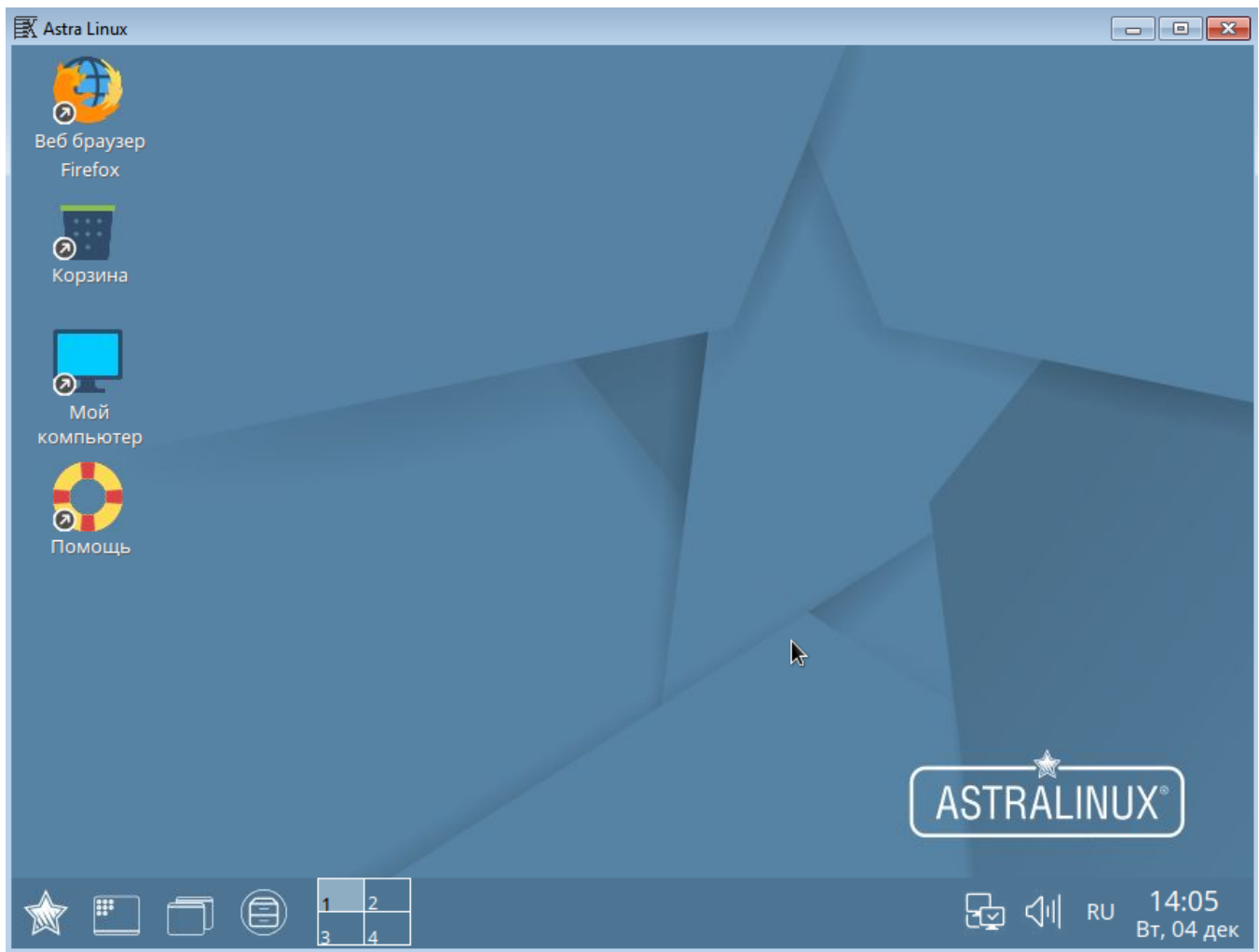
- " " : "fly-wm";
- "x2Go/X11 desktop sharing" ( " ") ( Astra Linux).

""

""

:





!  
x2go, . x2go "":

