

# Samba Astra Linux Special Edition .10015-01 1.5

- Samba
- pam\_mount



:

- Astra Linux Special Edition .10015-01 ( 1.5)
- Astra Linux Common Edition 1.11

• CIFS (samba DFS)

, :  
:

```
mkdir /share1
```

:

```
mkdir /share1  
mkdir /share1/zero  
mkdir /share1/dsp  
mkdir /share1/secret  
mkdir /share1/topsecret
```

, :

```
chmod 777 /share1 -R
```

"4. " " . 1.10015-01 97 01-1"):

```
pdpl-file 3:0:-1:ccnr /share1/  
pdpl-file 1:0:0 /share1/dsp  
pdpl-file 2:0:0 /share1/secret  
pdpl-file 3:0:0 /share1/topsecret
```

## Samba

/etc/samba/smb.conf :

## /etc/samba/smb.conf

```
[global]
#
workgroup = da.net
map to guest = Bad User
# netbios
disable netbios = no
[share1]
available = yes
comment = For all doc's
browseable = yes
case sensitive = yes
ea support = yes
fstype = Samba
path = /share1
writable = yes
smb encrypt = auto
read only = no
#
guest ok = yes
```



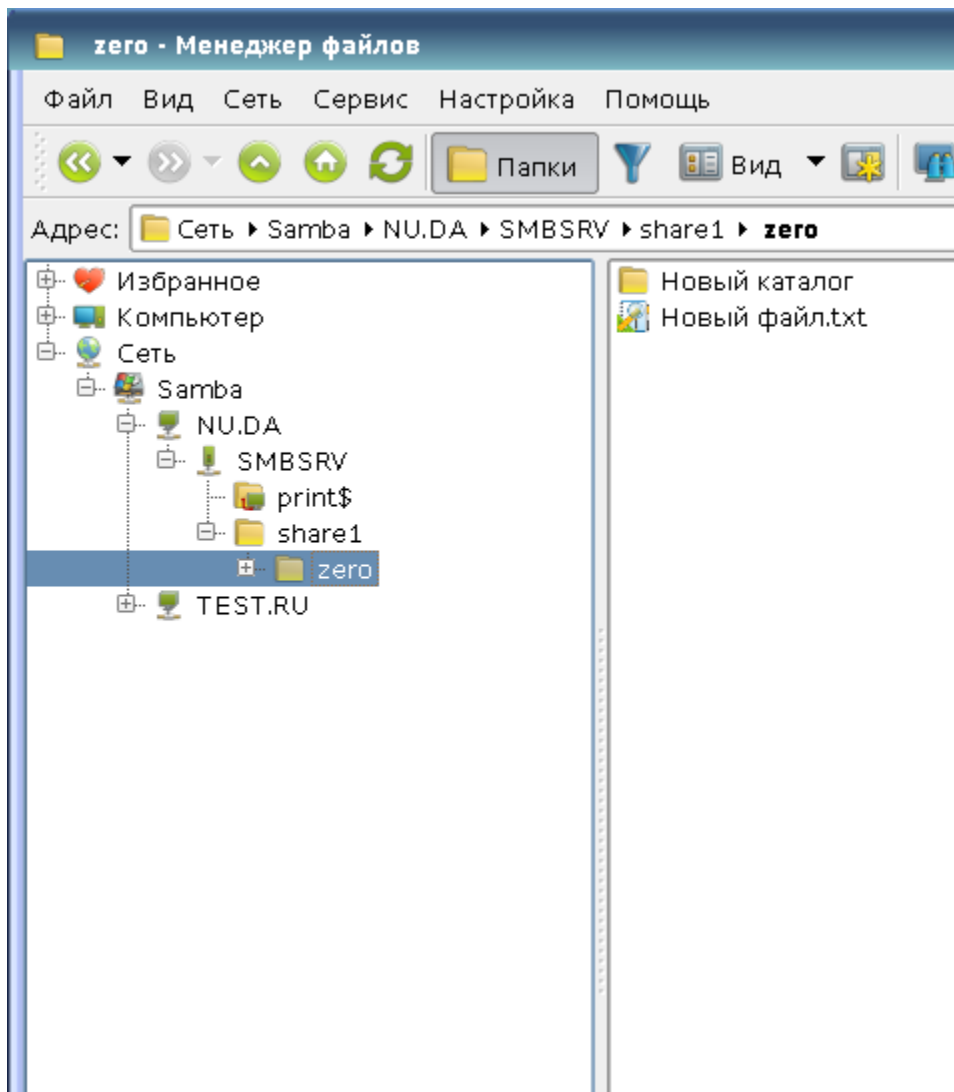
**fly-fm** **NetBIOS**, "disable netbios = no"

```
disable netbios = no
```

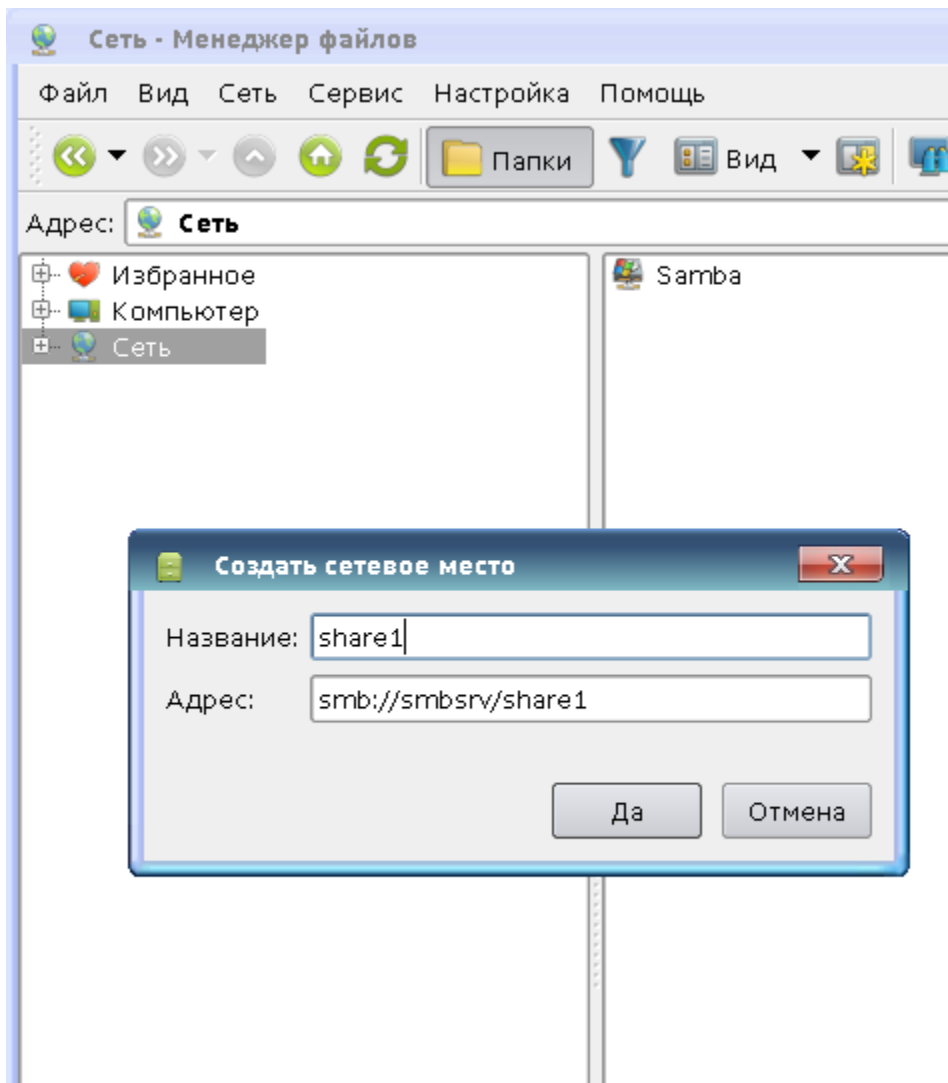
Samba:

```
service samba restart
```

(fly-fm) "", **Samba NetBIOS** :



NetBIOS , , "" "":



**Samba fuse**

**fuse** :

- Astra Linux Special Edition .10015-01 ( 1.6)
- Astra Linux Special Edition .10015-16 . 1 . 2
- Astra Linux Special Edition .10265-01 ( 8.1)
- Astra Linux Common Edition 2.12

mount ,:

```
mount.cifs /// /_ [-o ]  
mount -t cifs /// /_ [-o ]
```

```
, , , .. man mount mount.cifs. /etc/fstab sudo ( ~/share1 ):
```

```
sudo mount -t cifs //fileserver1.org.net/share1 ~/share1 -o user=
```

/etc/fstab:

1. cifs-utils:

```
apt install cifs-utils
```

2. , :

```
! //fileserver1.org.net/share1 /media/share1 cifs user,rw,noauto,iocharset=utf8,soft 0 0
```

3. , user .  
man mount mount.cifs. /etc/fstab man fstab.

4. - fstab :

```
! //fileserver1.org.net/share1 /media/share1 cifs user,rw,noauto,nosharesock,vers=1.0,soft 0 0
```



**Kerberos** sec=krb5i. **Kerberos** .

## pam\_mount

pam **pam\_mount**, **libpam-mount**, :

```
apt-get install libpam-mount
```

pam /etc/security/pam\_mount.conf.xml.

**pam** **pam** (common-auth, common-session) /etc/pam.d.

**pam** **pam\_mount** man **pam\_mount** **pam\_mount.conf**.

pam-mount **CIFS**, , ( **pam\_mount**):

### /etc/security/pam\_mount.conf.xml

```
<?xml version="1.0" encoding="utf-8" ?>
<!DOCTYPE pam_mount SYSTEM "pam_mount.conf.xml.dtd">

<pam_mount>

<logout wait="500000" hup="1" term="1" kill="1" />
<mkmountpoint enable="1" remove="true" />
<cifsmount>mount.cifs //%(SERVER)/%(VOLUME) %(MNTPT) -o %(OPTIONS)</cifsmount>
<volume fstype="cifs" server="fileserver1.org.net"
path="homes" mountpoint="[mountpoint_homes]/%(USER)"
options="user=%(USER),rw,setuids,perm,soft,iocharset=utf8" />

</pam_mount>
```



```
Kerberos      sec=krb5i.  Kerberos .  
  
    cruid=%(USERUID),  
  
    mountpoint  ,: /media/ald_share  
  
:  
  
path="share" mountpoint="/media/ald_share"  
options="user=%(USER),rw,setuids,perm,soft,sec=krb5i,cruid=%(USERUID),iocharset=utf8" />
```



```
logout . . .  
  
mkmountpoint .  
  
cifsmount , .  
  
volume . Samba .
```