

Astra Linux Windows

- C XDMCP
 - XDMCP Astra Linux
 - Astra Linux XDMCP Windows
- C RDP
 - RDP Astra Linux
 - Astra Linux RDP Windows
 - root xrdp
 - RDP Astra Linux SE (RDP)
- Astra Linux VNC
 - Astra Linux
 - vnc
 - Astra Linux Windows
- Astra Linux Windows
 - Windows
 - Astra Linux xfreerdp
 - 8-
 - Astra Linux Remmina
- Astra Linux Astra Linux
 - SSH
 - SSH Astra Linux
 -
 - sudo
 - XDMCP Astra Linux
 - RDP freerdp2-x11/krdc

- Astra Linux Special Edition .10015-01 .10015-10 (1.7)
- Astra Linux Special Edition .10015-37 (7.7)
- Astra Linux Special Edition .10152-02 (4.7)
- Astra Linux Special Edition .10015-01 (1.6)
- Astra Linux Special Edition .10015-16 .1 .2
- Astra Linux Special Edition .10265-01 (8.1)
- Astra Linux Common Edition 2.12

Astra Linux Windows Astra Linux Windows.

$$\vdots$$

- $() (, ,)$;
- $(,)$.



• •

- : TeamViewer;
- Astra Linux;

$$\vdots$$

- SSH - , Astra Linux. Astra Linux - Astra Linux (Remmina / x2go Astra Linux);
- XRDP - Microsoft RDP (Remote Desktop Protocol). Windows.;
- VNC (Virtual Network Computing);
- XDMCP - Linux- , XRDP. Windows [VcXsrv](#). VcXsrv Windows 7 c KB2999226 . Service Pack1 Windows 7, 1.09.2016. .

C XDMCP

XDMCP Astra Linux

XDMCP Astra Linux Astra Linux Windows. , Astra Linux Special Edition . Astra Linux :

1. , :

- a. `/etc/X11/fly-dm/Xaccess localhost * (""):`

```
sudo sed -i "s/^localhost/*/ " /etc/X11/fly-dm/Xaccess
```

- ```
b. : "" - "" - " " "" - " " " "() ;
```
2. , Astra Linux Special Edition /etc/X11/fly-dm/fly-dmrc [Xdmcp] EnableAll false true ( - ):

```
EnableAll=true
```



EnableAll Astra Linux Special Edition .10015-01 [20190912SE16](#) ( 3) ( fly-dm 2.6.16 fly-qdm 2.6.7).

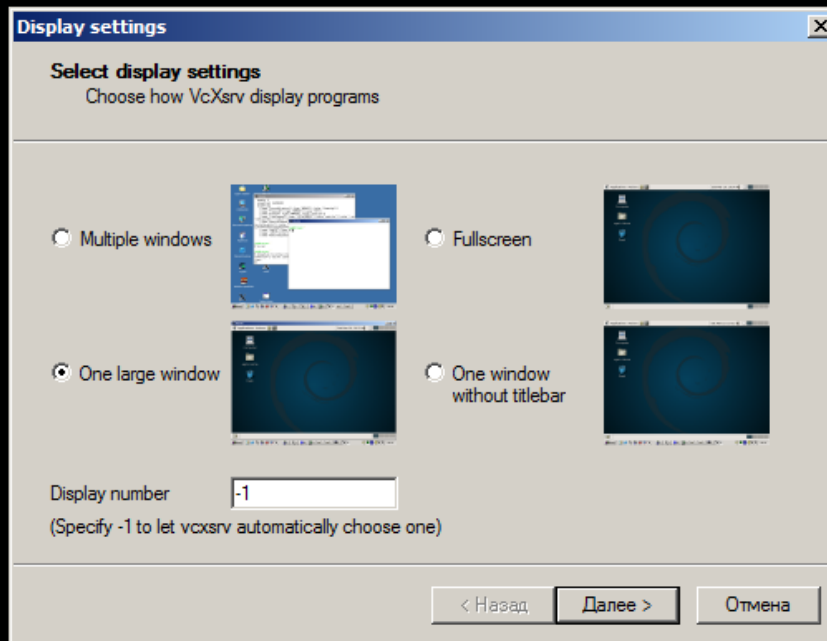
3. fly-dm ( ):

```
sudo systemctl restart fly-dm
```

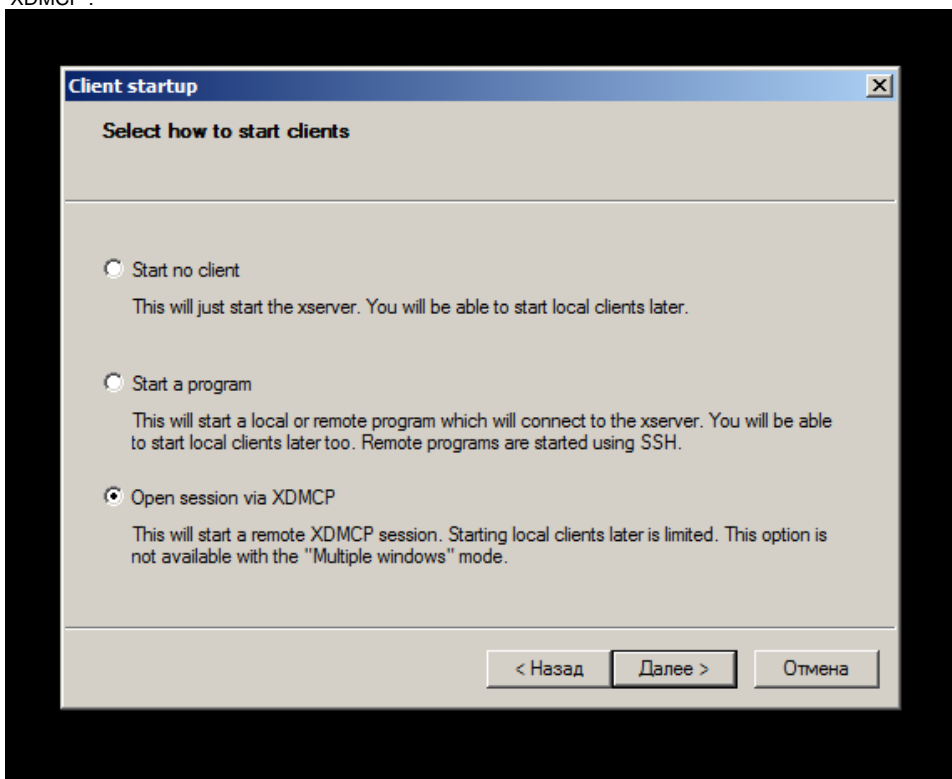
## Astra Linux XDMCP Windows

Astra Linux XDMCP Windows :

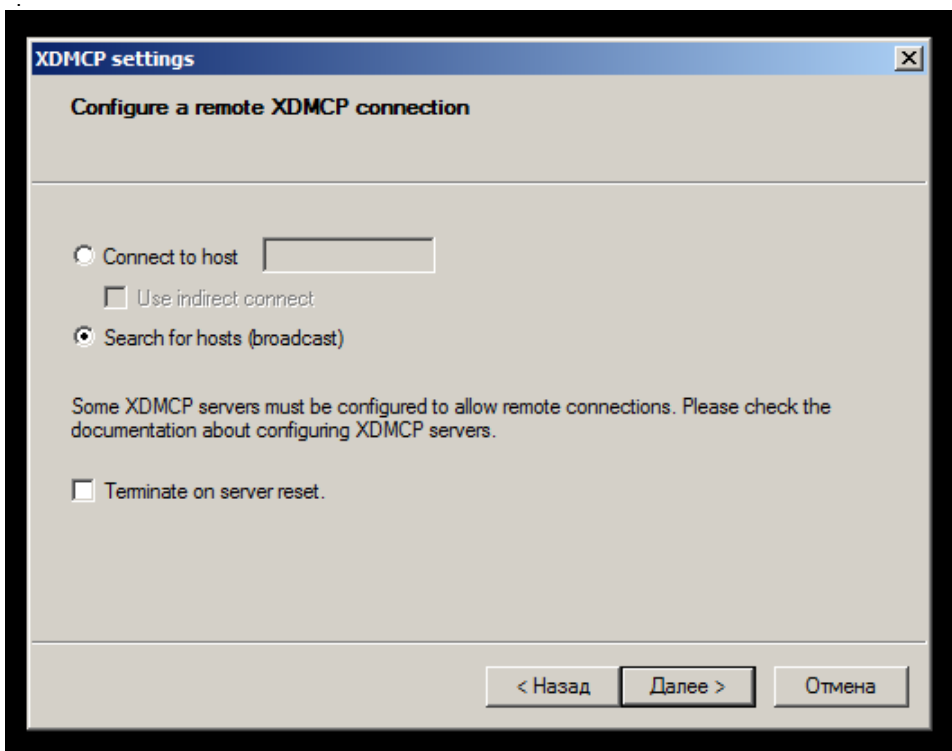
1. [VcXsrv](#);
2. ( Windows ), "VcXsrv windows xserver" (C .) " TCP" " UDP);
3. **Xlaunch**;
4. "One large window":



5. XDMCP :

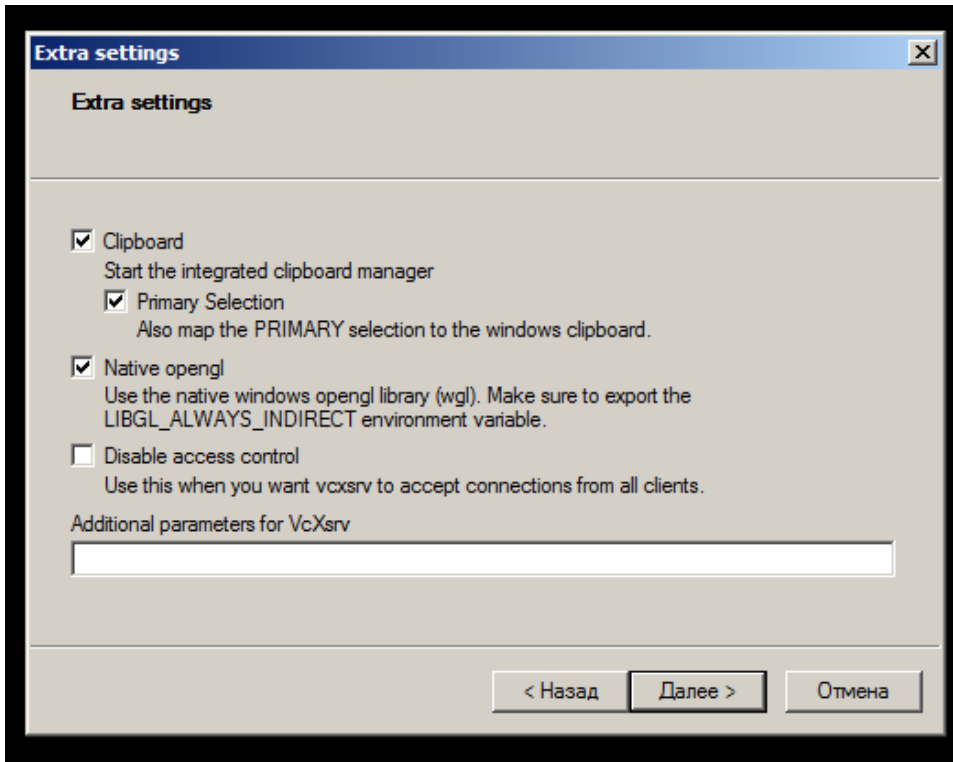


6. :

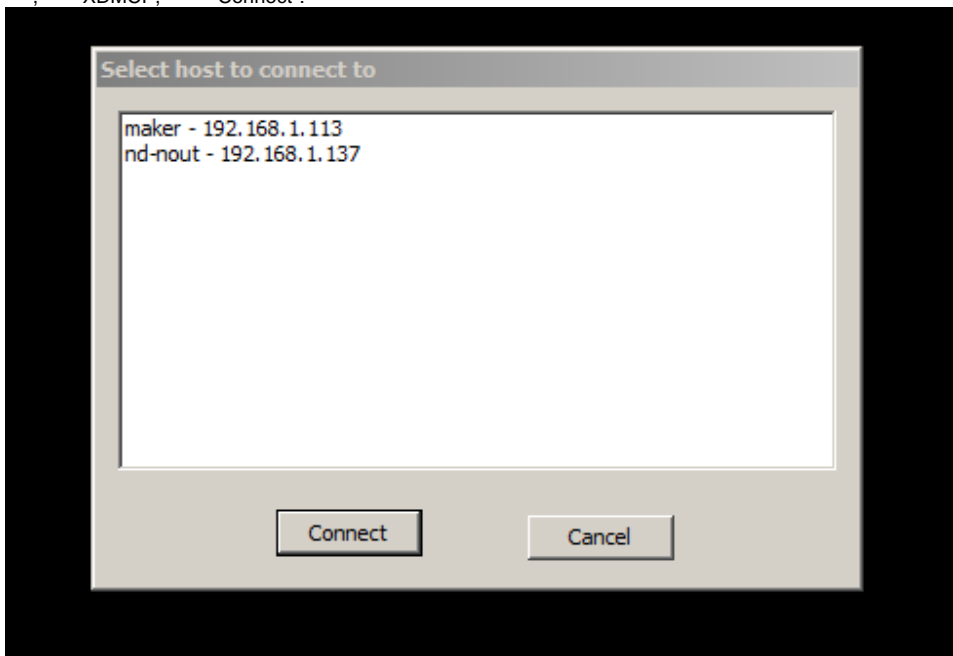


7. " " "Additional parameters for VcXsrv" :

```
-displayID 0:63:0x0:0x0
```



8. , "XDMCP", "Connect":



## C RDP

### RDP Astra Linux



:

- Astra Linux c Astra Linux, Astra Linux Windows;



RDP , , xrdp ( Astra Linux Special Edition Astra Linux Common Edition). pulseaudio-module-xrdp ( Astra Linux Special Edition x.7 Astra Linux Common Edition).

- Astra Linux Special Edition x.7 Astra Linux Common Edition :

```
sudo apt install xrdp pulseaudio-module-xrdp
```

- Astra Linux Special Edition 1.6:

```
sudo apt install xrdp
```

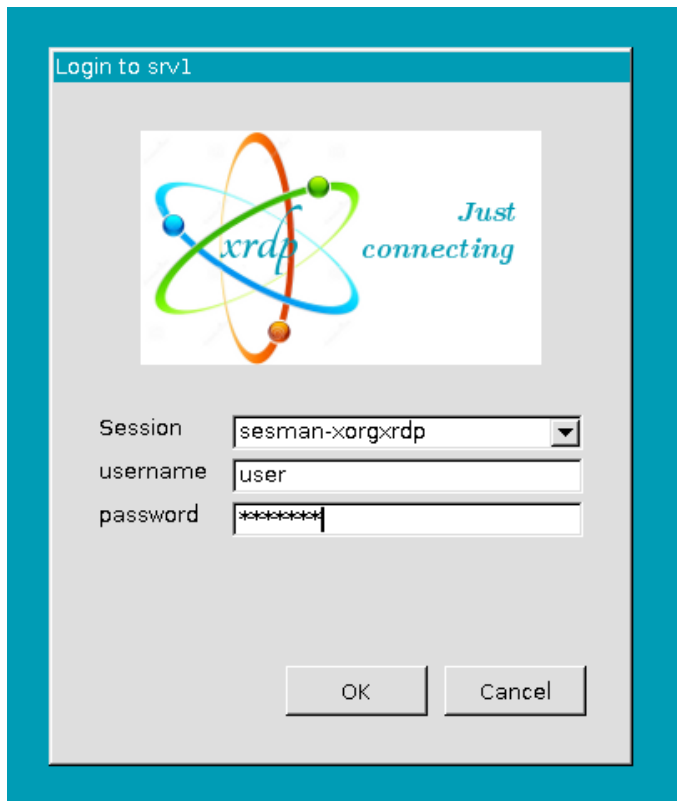
xrdp.service, IP- tcp/3389 xrdp-sessman (tcp/3350) . .

## Astra Linux RDP Windows

Windows Astra Linux RDP mstsc.

" " :

- "Xorg" Astra Linux Special Edition .10015-01 1.5;
- "session-xorgxrdp" Astra Linux Special Edition .10015-01 ( 1.5).



, ""

.

root xrdp





root .

root xrdp /root:

```
cp /home/<user>/.Xauthority /root
```

## RDP Astra Linux SE ( RDP)

Astra Linux SE RDP .

, , /etc/X11/trusted :



/usr/bin/spectacle(SNAP\_R)

. /etc/X11/trusted.

## Astra Linux VNC



Astra Linux **xrdp vino**, " " .  
Astra Linux Special Edition .10015-01 ( 1.6) .

## Astra Linux

Astra Linux vino xrdp:



sudo apt install vino xrdp

, /etc/xrdp/xrdp.ini Xvnc ( "[vnc-any]" ) port 5900 ( ask5900). , 5900 xrdp:

```
sudo systemctl restart xrdp
```



:

1. ( Alt+t);
2. vnc:

```
/usr/lib/vino/vino-server &
```

### vnc

, vnc , libglib2.0-bin

```
sudo apt install libglib2.0-bin
```

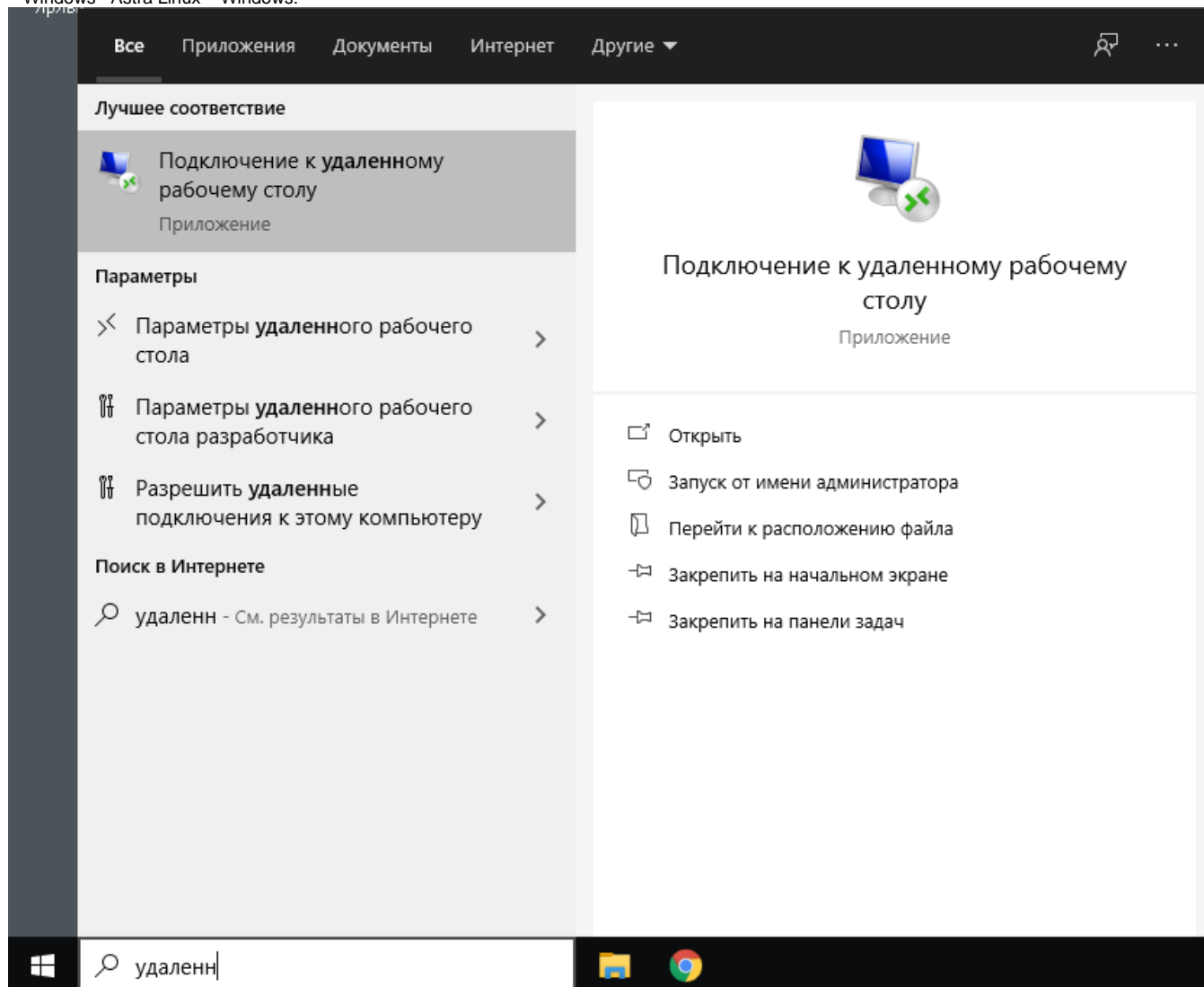
( ):

```
gsettings set org.gnome.Vino authentication-methods "['vnc']"
gsettings set org.gnome.Vino vnc-password "$ (echo -n "<>" | base64) "
```

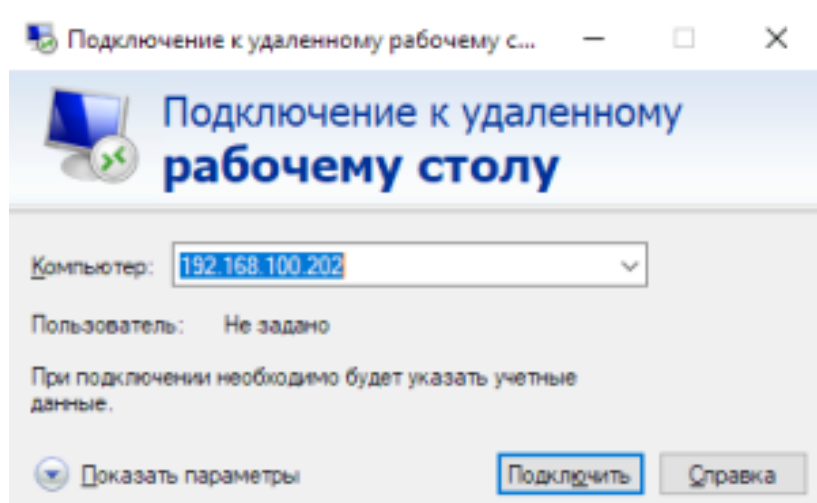
vnc .

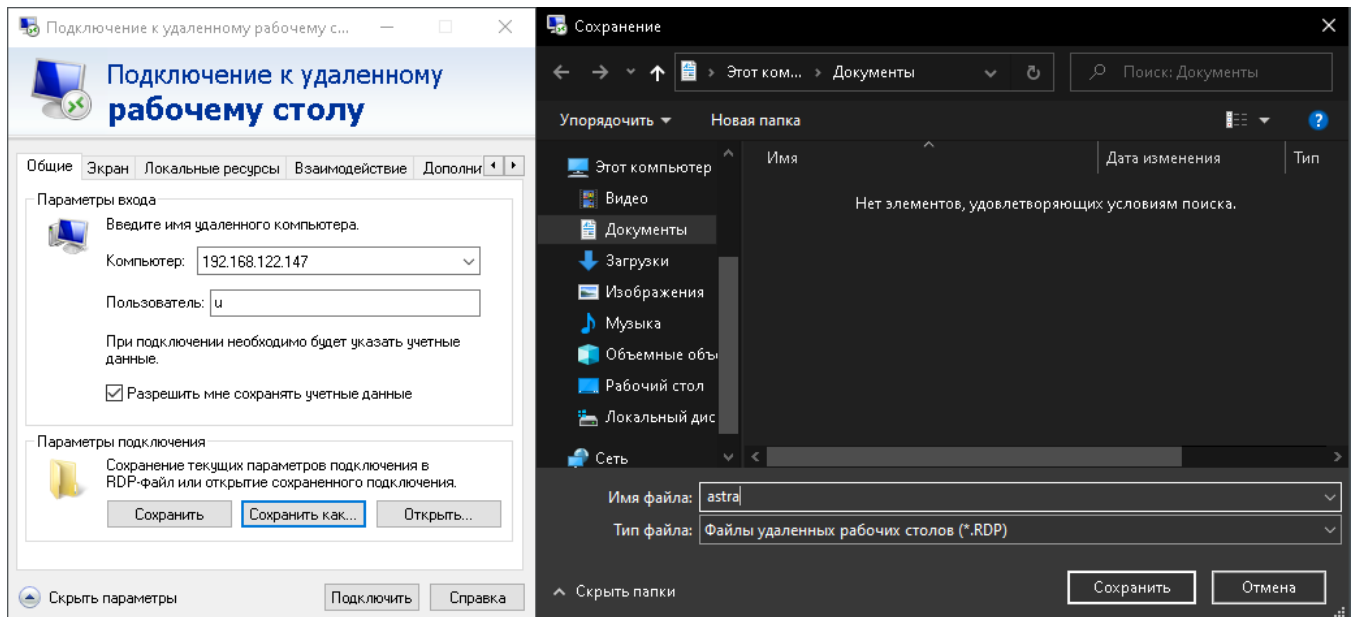
## Astra Linux Windows

Windows Astra Linux Windows:



IP-:

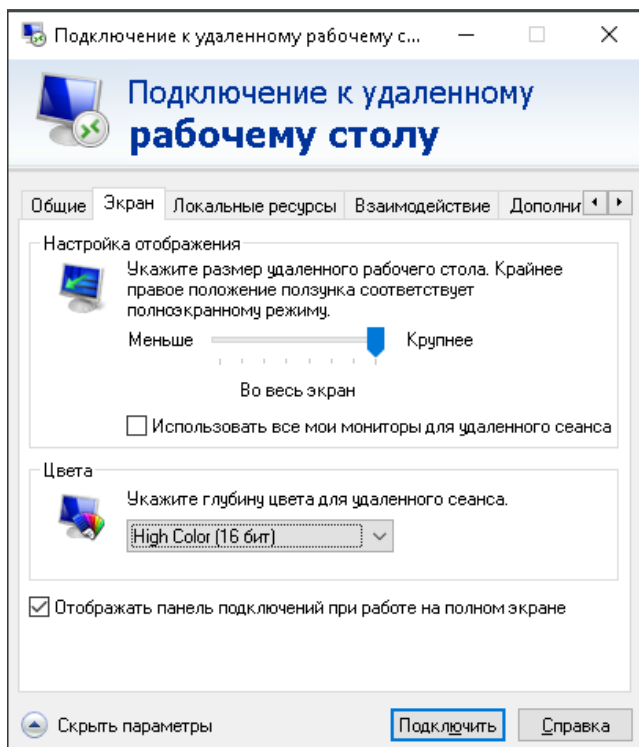




("Display") ( FHD) .

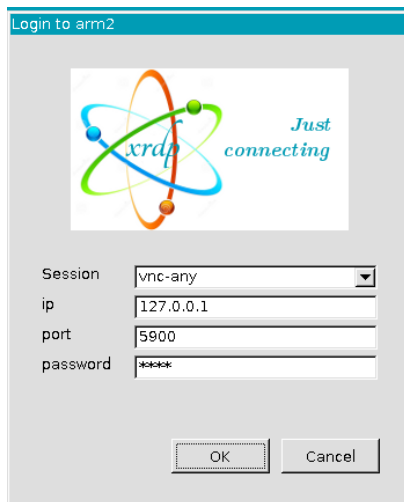


16 .



vnc-any, IP-, :





## Astra Linux Windows

### Windows

 Windows : « » -> « » -> « ».


### Astra Linux xfreerdp

freerdp2-x11:

```
sudo apt install freerdp2-x11
```

:

```
xfreerdp /u:<__windows> /v:<__IP-__windows>
```

 Windows NLA, xfreerdp Astra Linux /sec:tls, :

```
xfreerdp /u:<__windows> /v:<__IP-__windows> /sec:tls
```

### 8-

8- /relax-order-checks, :

```
xfreerdp /u:$user /p:$pass /v:$ip_orel /bpp:8 /relax-order-checks
```

### Astra Linux Remmina

Remmina Astra Linux Special Edition x.7 . Astra Linux Special Edition [Astra Linux Common Edition](#). :

```
sudo apt install remmina remmina-plugin-rdp remmina-plugin-secret remmina-plugin-spice
```

Remmina (" - " - "Remmina") :

```
remmina
```

## Astra Linux Astra Linux

### SSH

#### SSH Astra Linux

SSH.. [SSH](#).

, , X11Forwarding /etc/ssh/sshd\_config yes:

```
X11Forwarding yes
```

() SSH- -X. :

```
ssh -X <__>@<__> <>
```

, <\_\_>@ . , ssh, , .

kate:

```
ssh -X 192.168.1.32 kate
```

### sudo

, ssh sudo :

1. ssh :

```
ssh -X <__>@<__>
```

2. ssh /root/.Xauthority:

```
sudo touch /root/.Xauthority
```

3. /root/.Xauthority , ssh:

```
sudo xauth add `xauth list $DISPLAY`
```

sudo.

### XDMCP Astra Linux

, Astra Linux .. [XRDMCP Astra Linux](#).

Astra Linux XDMCP xserver-xephyr 1.20.10-3ubuntu5astra[.se]1 ( ).

:

```
Xephyr -query <__IP-__> :1
```

## RDP freerdp2-x11/krdc

, (), freerdp2-x11 krdc.

- Astra Linux Special Edition x.7 , Astra Linux Common Edition . :

```
sudo apt install krdc
```

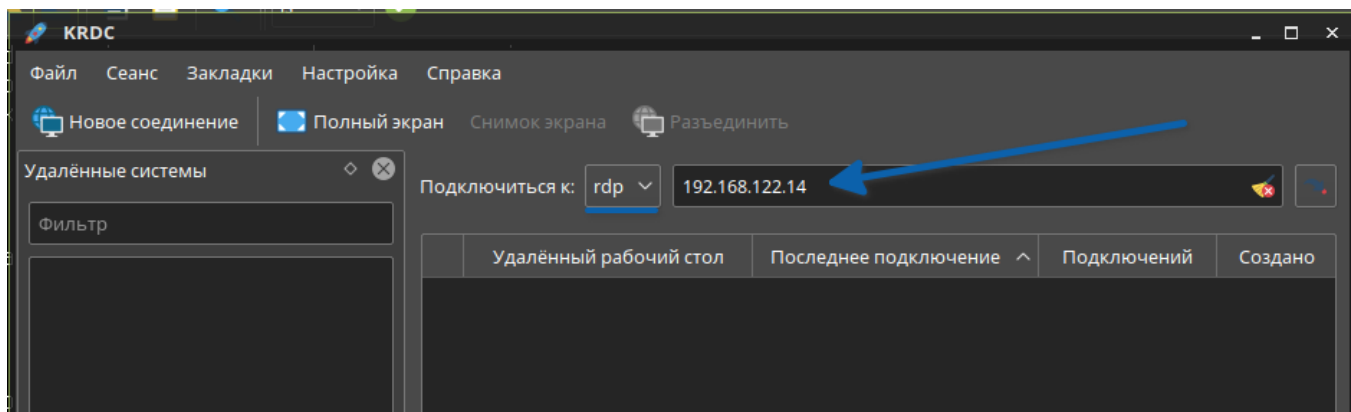
- Astra Linux Special Edition 1.6 krdc [Astra Linux Common Edition](#) Astra Linux Common Edition ( ):

```
wget https://dl.astralinux.ru/astra/frozen/2.12_x86-64/2.12.44
/repository/pool/main/k/krdc/krdc_19.12.3-0ubuntu1astral_amd64.deb
sudo apt install ./krdc*_amd64.deb
```

krdc freerdp2-x11. : **KRDC**



RDP, Enter:



:

Параметры хоста — KRDC

Параметры хоста

Соединение

Разрешение экрана: Текущий размер окна KRDC

Ширина: 0Высота: 0

Глубина цвета: High Color (16 бит)

Раскладка клавиатуры: Американская английская (en-us)

Звук: На этом компьютереALSA

Скорость: Локальная сеть

RemoteFX: ☒ Улучшенное представление

Общий ресурс: /home/u/Загрузки


Дополнительные параметры

Консольный вход: ☐ Подключиться к консоли Windows Server

Дополнительные параметры:

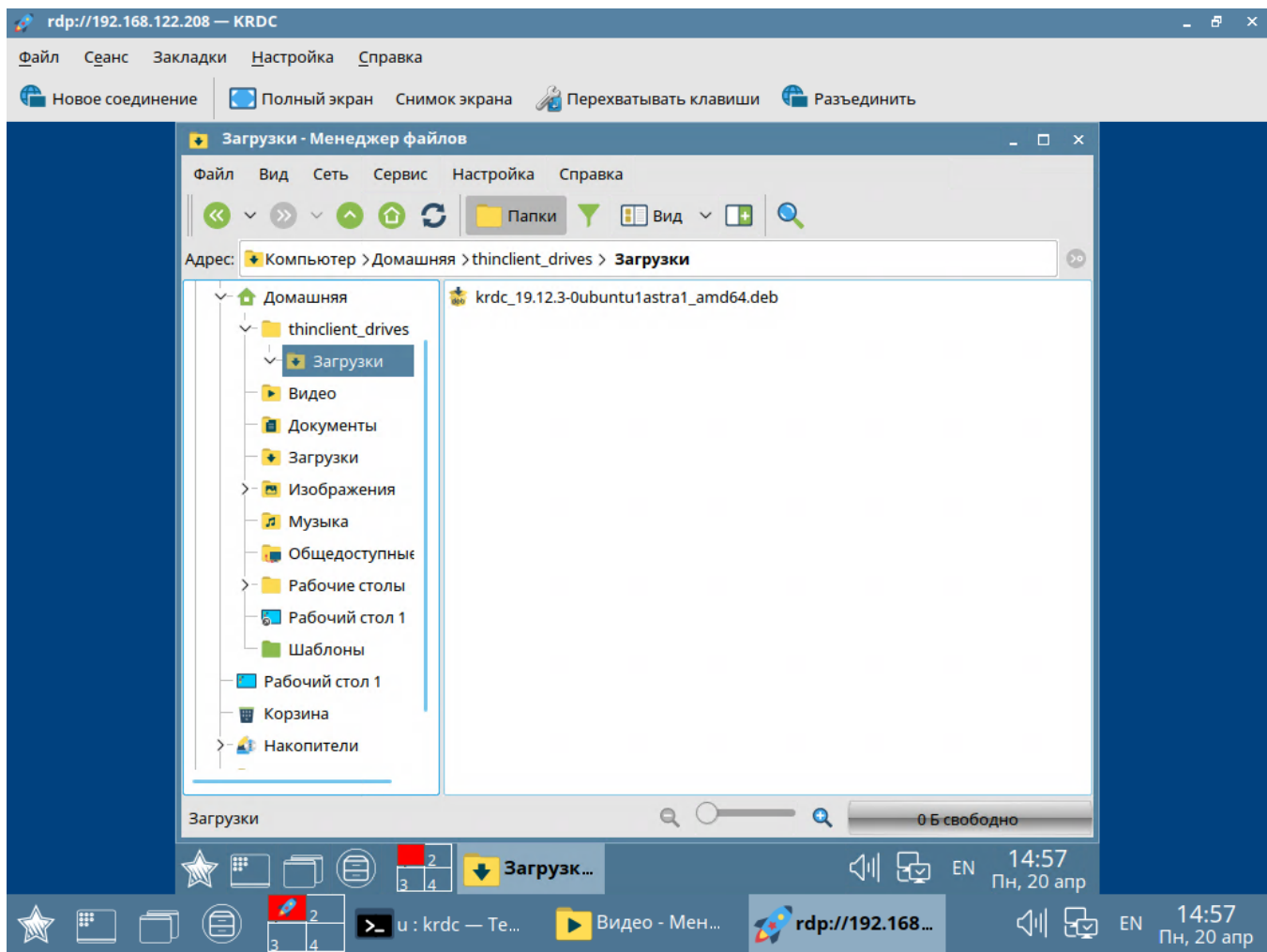
☒ Показывать это окно ещё раз для этого хоста

ДаОтмена

 , 16

" " rdp-

-rdp linux, , :



-rdp windows, , tsclient:

