

Astra Linux Special Edition 1.5 USB-

! . . [Astra Linux](#).

i :

- Astra Linux Special Edition .10015-01 (1.5)

• USB-
• -

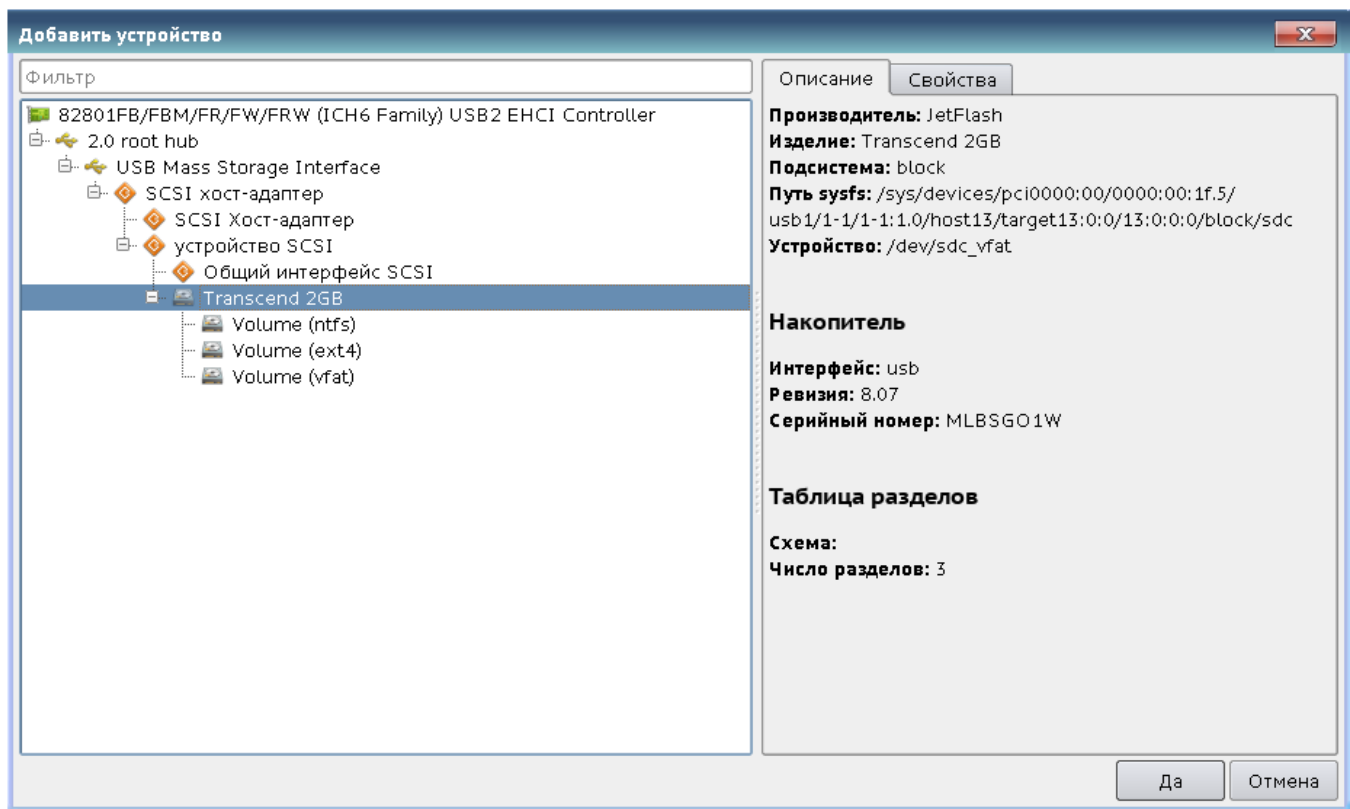
USB-

! (ID_SERIAL) udev .

! USB-, , floppy fuse.
fuse samba . samba , ,: USB- ntfs suid /bin/ntfs-3g.

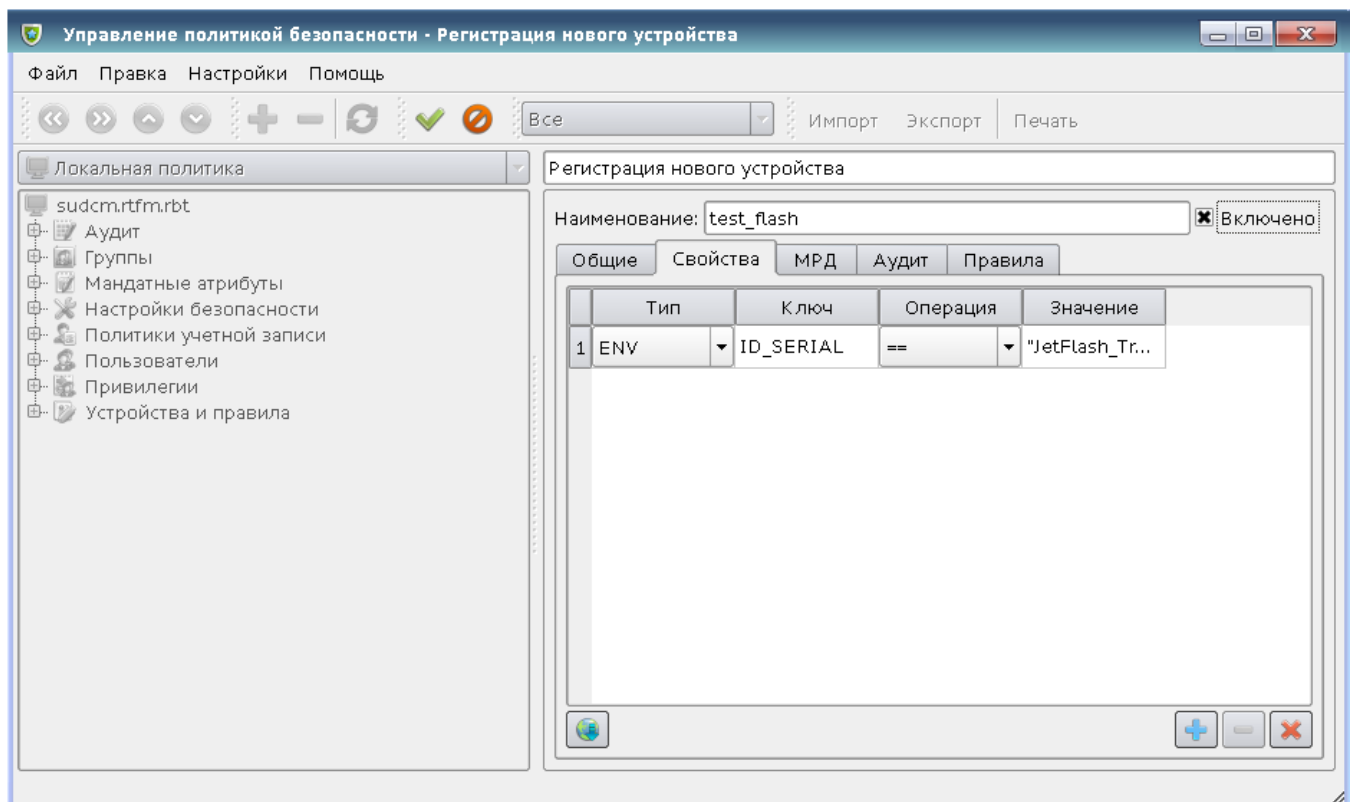
! Astra Linux fuse . USB- . [Astra Linux](#).

, . USB- Ext2/Ext3/Ext4.
fly-admin-smc (), " " , " " "+" (" " ").
(.). (1)



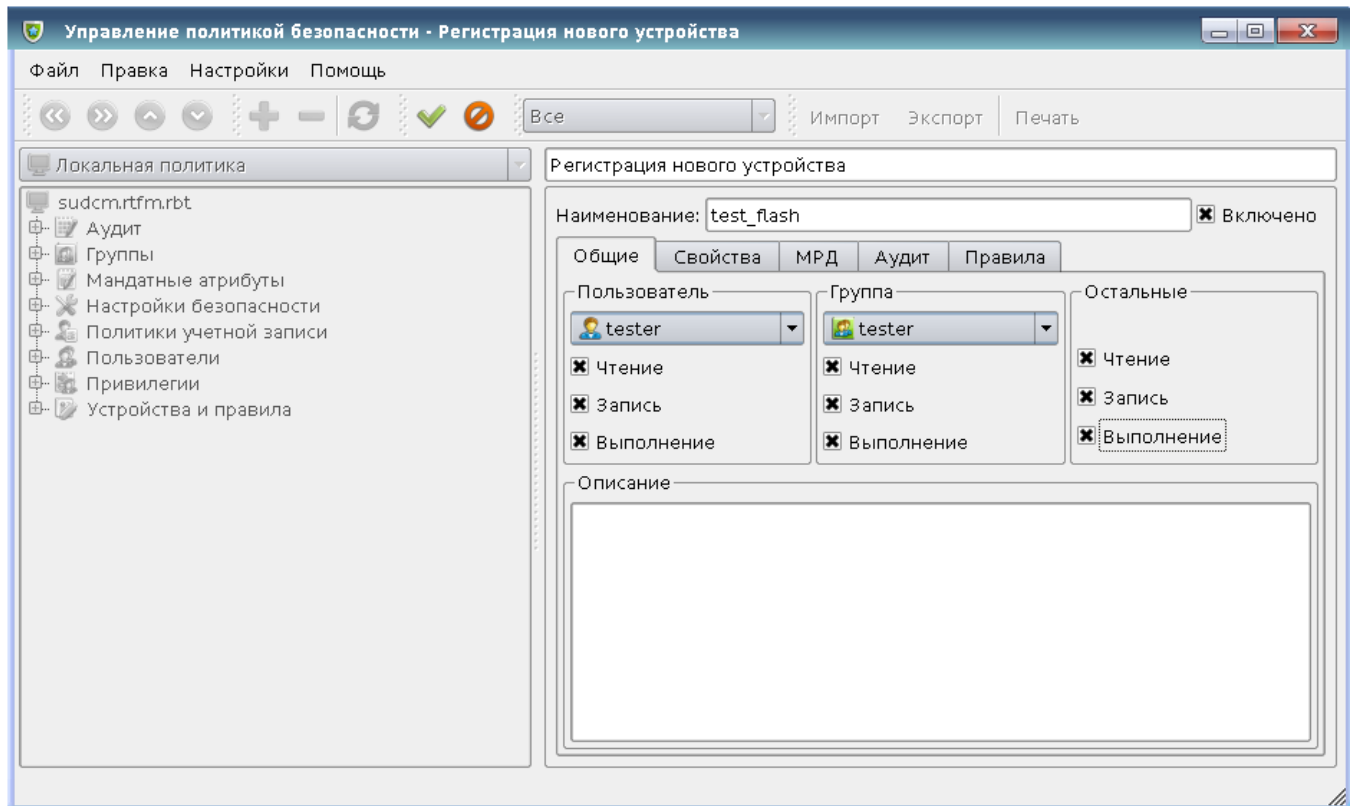
- "", "" (2)

2.

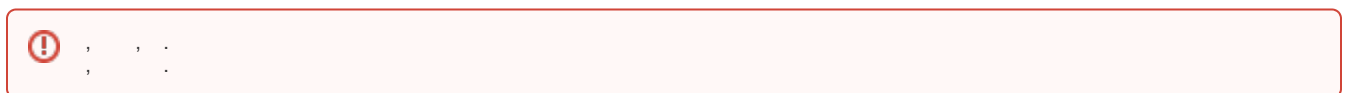


"", () -, , (3)

3.



"" ()



EXT- Astra Linux , ACL. . :

1. :

```
mkdir /tmp/ext
```

2. :

```
mount /dev/sdb3 /tmp/ext/
```

3. (.):

```
chown <_>.<__> /tmp/ext/
```

4. :

```
chmod 770 /tmp/ext/
```

5. :

```
umount /dev/sdb3
```

-

1. Ext2 ;
2. (Label), : ns, dsp, sec, ss;
3. , ID_SERIAL_SHORT ID_FS_UUID, , ;
4. , .