

Astra Linux Special Edition 1.5 1

• 1C
• 1C



- Astra Linux Special Edition .10015-01 (1.5)
- Astra Linux Common Edition 1.11

1C

/etc/hosts localhost.localdomain IPv6, DNS-, IP- – FQDN – .

cat /etc/hosts

```
127.0.0.1      localhost
10.0.2.200     astral5-1c.example.ru  astral5-1c
```

cat /etc/hostname

astral5-1c

1C:

```
sudo apt-get install postgresql-astra postgresql-contrib
```

, libwebkitgtk-1.0c , :

```
mkdir /tmp/libwebkit
tar -xvf libwebkitgtk-1.0.tar.gz -C /tmp/libwebkit
dpkg -i /tmp/libwebkit/*
```

:

```
usermod -a -G shadow postgres

setfacl -d -m u:postgres:r /etc/parsec/macdb
setfacl -R -m u:postgres:r /etc/parsec/macdb
setfacl -m u:postgres:rx /etc/parsec/macdb

setfacl -d -m u:postgres:r /etc/parsec/capdb
setfacl -R -m u:postgres:r /etc/parsec/capdb
setfacl -m u:postgres:rx /etc/parsec/capdb
```

, :

postgresql.conf

```
# - Connection Settings -
listen_addresses = '*'          # what IP address(es) to listen on
```

pg_hba.conf

```
# IPv4 local connections:
host      all             all             0.0.0.0/0          md5
```

1C PostgreSQL :

postgresql.conf

```
backslash_quote = safe_encoding
escape_string_warning = off
standart_conforming_strings = off
```

postgres:

```
sudo su postgres

psql -c "ALTER ROLE postgres WITH PASSWORD '12345678';"

exit
```

PostgreSQL:

```
sudo service postgresql restart
```

1C 4:

```
lc-enterprise83-client_*.deb
lc-enterprise83-common*_amd64.deb
lc-enterprise83-server*_amd64.deb
lc-enterprise83-ws*_amd64.deb
```

1C.

, 1csrv, :

```
cd 1csrv/

sudo dpkg -i *.deb
```

, :

```
sudo apt-get install -f
```

hasp haspd:

```
cd /tmp/

wget http://download.etersoft.ru/pub/Etersoft/HASP/stable/x86_64/Debian/7/haspd-modules_7.60-eterldebian_amd64.deb

wget http://download.etersoft.ru/pub/Etersoft/HASP/stable/x86_64/Debian/7/haspd_7.60-eterldebian_amd64.deb

sudo dpkg -i haspd-modules\_7.60-eterldebian\_amd64.deb

sudo dpkg -i haspd\_7.60-eterldebian\_amd64.deb
```

/etc/haspd/hasplm.conf:

```
NHS_IP_LIMIT = 127.0.0.1, 10.0.2.0/24
```

10.0.2.0/24 , HASP

haspd:

```
sudo service haspd restart
```

1C:

```
sudo chown -hR usrlcv8:grplcv8 /opt/1C
```

1C:

```
sudo service srvlc83 restart
```

:

```
1C:Enterprise 8.3 server status:  
Init script: STARTED.  
Ragent: RUNNING.
```

1C :

- " 1C " windows
- **rac.**

:

```
/opt/1C/v8.3/x86_64/ras --daemon cluster
```

:

```
/opt/1C/v8.3/x86_64/rac
```

:

```
/opt/1C/v8.3/x86_64/rac cluster list
```

, Apache2

1C, :

```
sudo /opt/1C/v8.3/x86_64/webinst -apache22 -wsdir pgbase -dir '/var/www/pgbase' -connStr 'Srvr="astral5-1c";  
Ref="infobase";' -confPath /etc/apache2/apache2.conf
```

-wsdir - - ;

-dir - web- 1c;

-connStr - 1c (astr15-1c - 1c, infobase -)

-confPath - web- apache.

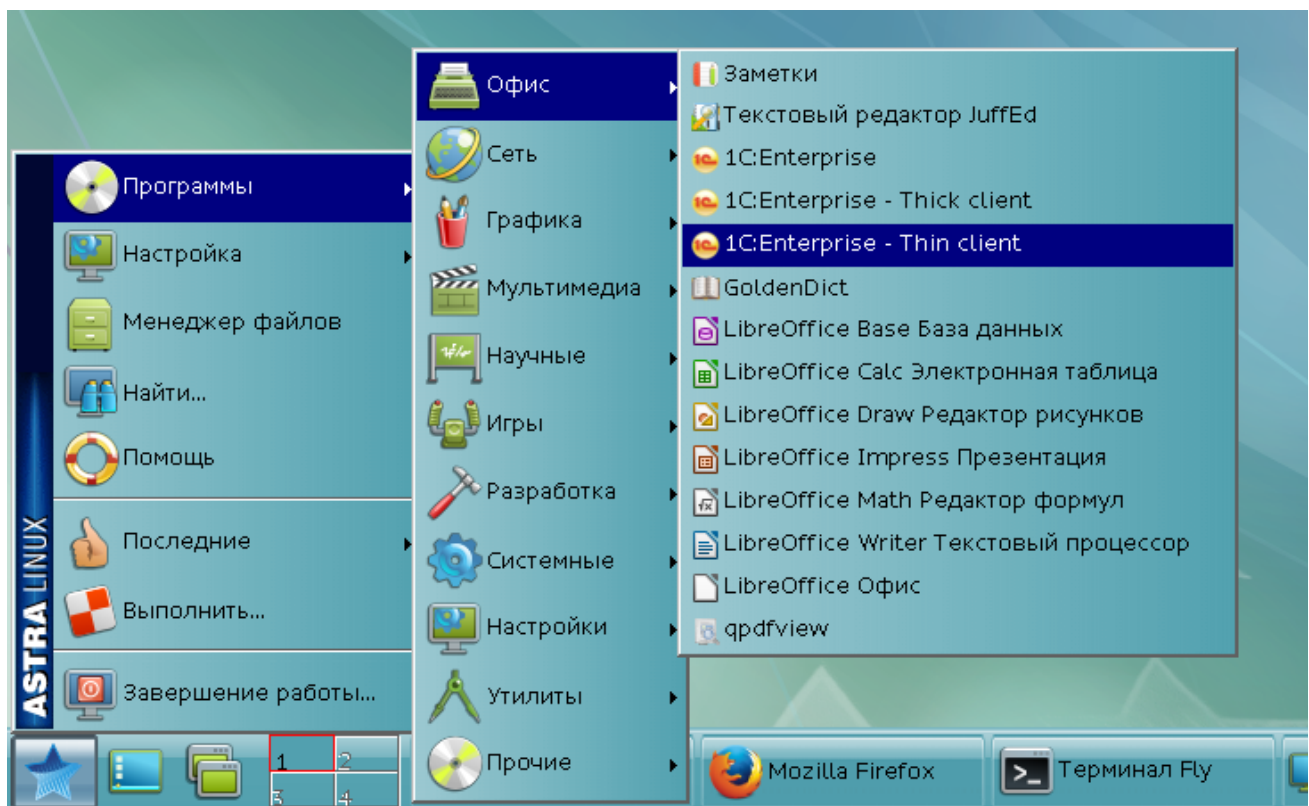
1C

1C, windows, Linux

:

```
dpkg -i 1c-enterprise83-thin-client_*.amd64.deb
```

:



.: 1C:.

:
Linux

libWand.so :dlopen: TLS

: LD_PRELOAD=libgomp.so.1 < 1C:>/1cv8c , TLS -, libgomp, . : <http://gcc.1065356.n5.nabble.com/patch-google-integration-Don-t-force-tls-model-to-initial-exec-when-building-libgomp-issue6107046-td559562.html>