

# Astra Linux MS Windows (Remote Desktop RDS)

- - RDS
  - Remote Desktop
  - RDP
- 
- Astra Linux
  - xfreerdp
  - remmina
- Windows
  -
- Remote Desktop Astra Linux
  - xfreerdp
  - remmina
- (RDS) Astra Linux
  -
- remmina



:

- Astra Linux Special Edition .10015-01 ( 1.7), .10015-10
- Astra Linux Special Edition .10015-17
- Astra Linux Special Edition .10015-37 ( 7.7)
- Astra Linux Special Edition .10015-03 ( 7.6)
- Astra Linux Special Edition .10152-02 ( 4.7)
- Astra Linux Special Edition .10015-01 ( 1.6)
- Astra Linux Special Edition .10015-16 . 1
- Astra Linux Special Edition .10015-16 . 2
- Astra Linux Special Edition .10265-01 ( 8.1)
- Astra Linux Common Edition 2.12

## RDS

(Remote Desktop Service, RDS). Terminal Services (Terminal Services RemoteAPP). Microsoft Windows Server, .

## Remote Desktop

(Remote Desktop) — , , . . :

- , , ;
- , , .

## RDP

RDP (Remote Desktop Protocol) — , .

- :
  - Astra Linux Common Edition 2.12 xfreerdp;
- :
  - MS Windows 2016. , :
    - ;
    - RDS.

## Astra Linux

MS Windows Remote Desktop RDS - RDP. Astra Linux RDP:

- freerdp2-x11 ( xfreerdp).
  - Astra Linux Special Edition .10015-01 ( 1.7) (. Astra Linux Special Edition x.7: , , );
- remmina ( remmina) :
  - Astra Linux Special Edition .10015-01 ( 1.6) Astra Linux Common Edition (. Astra Linux );
  - Astra Linux Special Edition .10015-01 ( 1.7) (. Astra Linux Special Edition x.7: , , );

## xfreerdp

freerdp2-x11, - xfreerdp :

```
sudo apt install freerdp2-x11
```

, xfreerdp.

## remmina

remmina, - remmina :

```
sudo apt install remmina
```

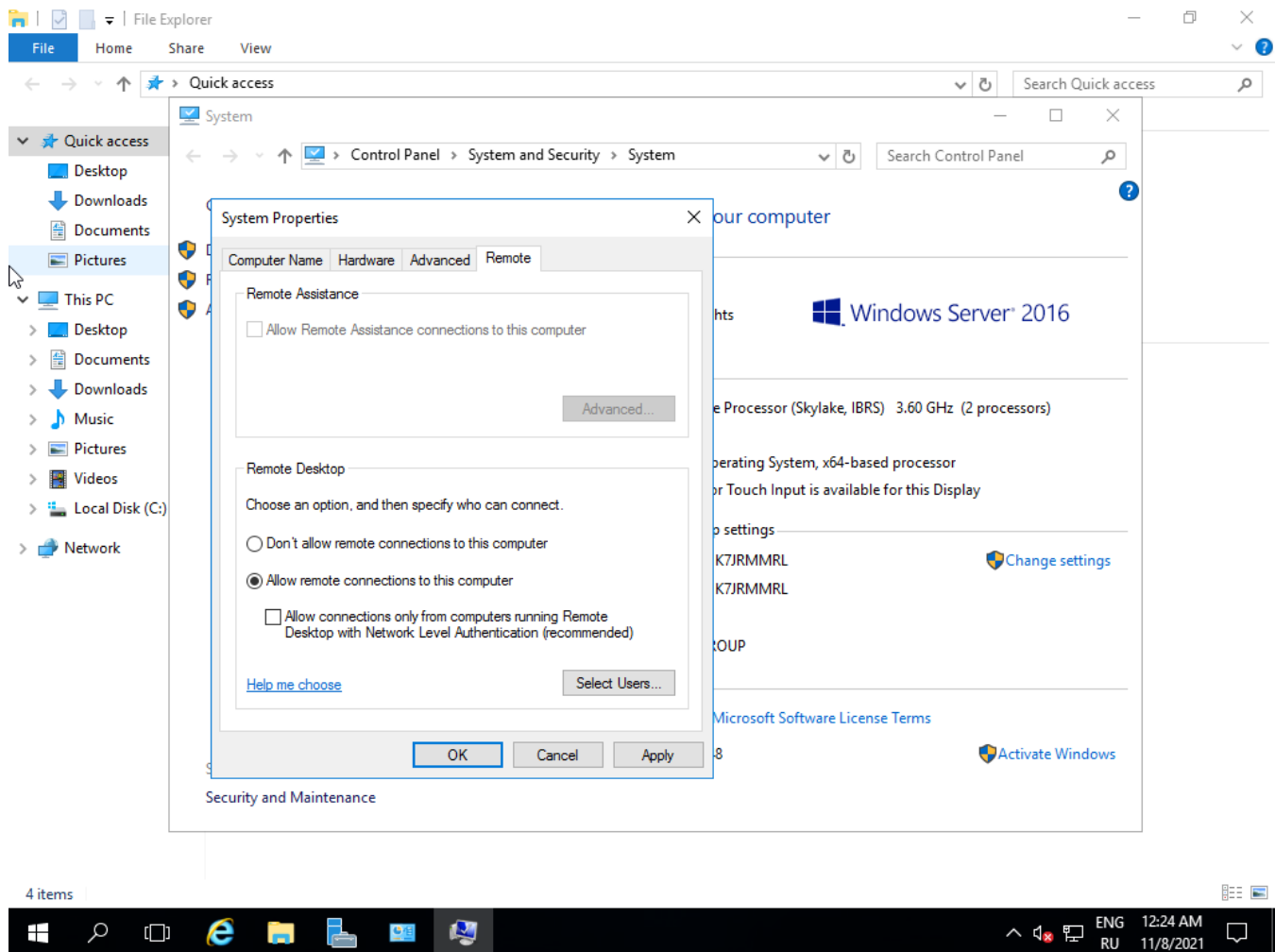
, remmina ("" - "" - "Remmina"). man:

```
man remmina
```

## Windows

### Remote Desktop Windows

→ ( ):



MS Windows . . :

1. AD;
2. RDS.

RDS ( Paint) :

- " ." - "QuickSessionColleciton";
- " "Remoteapp" "" , - " RemoteApp";
- ""

## Remote Desktop Astra Linux

### xfreerdp

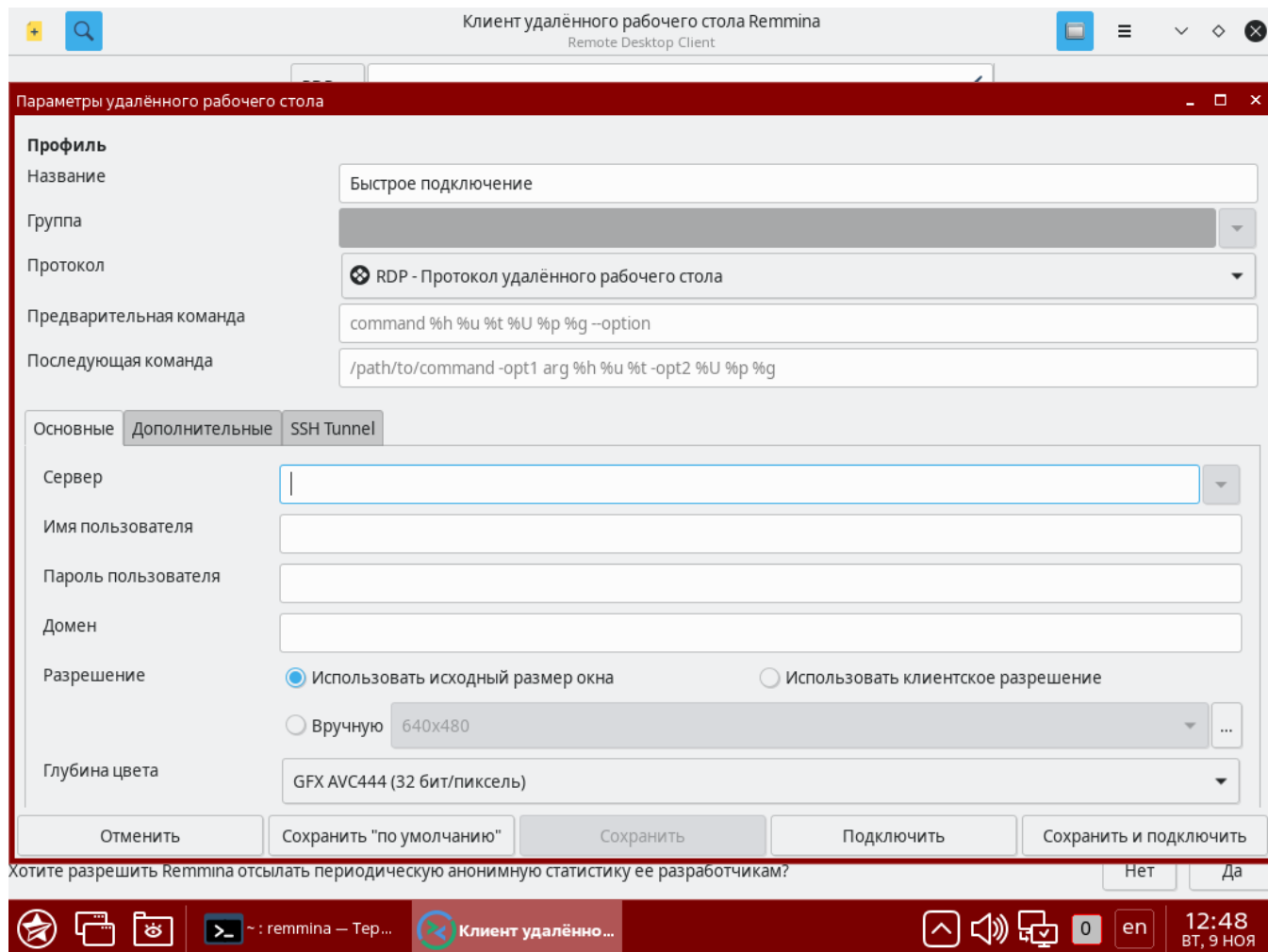
xfreerdp:

1. Alt+T;
2. , :

```
xfreerdp /u:<__Windows> /p:<__Windows> /v:<IP-__Windows>
```

### remmina

remmina , - ( remmina - "+"):



"" (IP- , ), . (Remote Desktop).

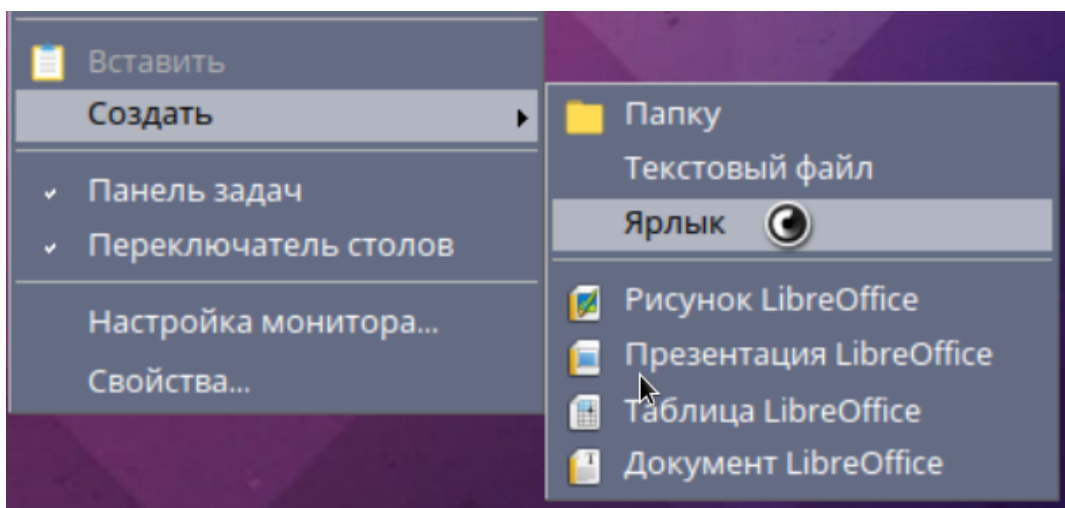
## (RDS) Astra Linux

xfreerdp, Remote Desktop. (/app):



```
xfreerdp /u:<__Windows> /p:<__Windows> /v:<IP-__Windows> /app:"| |<_>"  
/cert-ignore
```

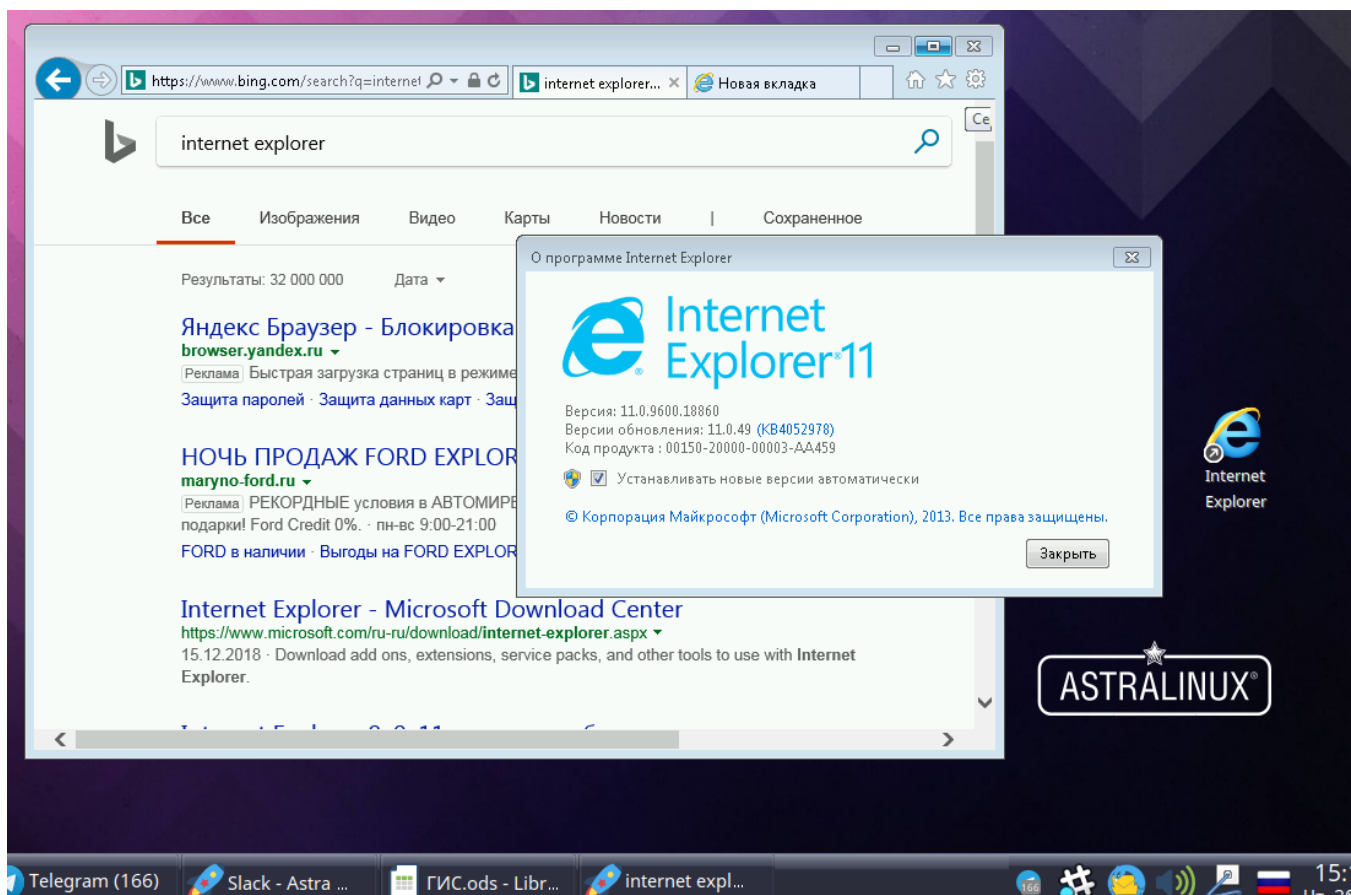
/app (/app:"win32calc"). RDS, - RDS. /cert-ignore ( ).

Astra Linux, ...



, ...:

Тип:	Приложение
Имя:	Internet Explorer
Имя [ru]:	Internet Explorer
Значок:	rat/Desktop/Internet_Explorer_9.png 
Значок [ru]:	
Команда:	xfreerdp /u:Makhmadiev /p:qwerty123 ...



## remmina

remmina



1. remmina;
2. remmina;
3. "";
4. "" . ("").