

MultiSeat Astra Linux

-
- fly-admin-multiseat
-
-
-
-

Astra Linux "multiseat". , , , .

- Astra Linux Special Edition .10015-01 (1.7), .10015-10
- Astra Linux Special Edition .10015-17
- Astra Linux Special Edition .10015-37 (7.7)
- Astra Linux Special Edition .10015-03 (7.6)
- Astra Linux Special Edition .10015-01 (1.6)
- Astra Linux Special Edition .10015-16 . 1
- Astra Linux Common Edition 2.12

```
multiseat fly-dm (root).
```

 , , ().

 multiseat , , (, "") () .

multiseat , . .

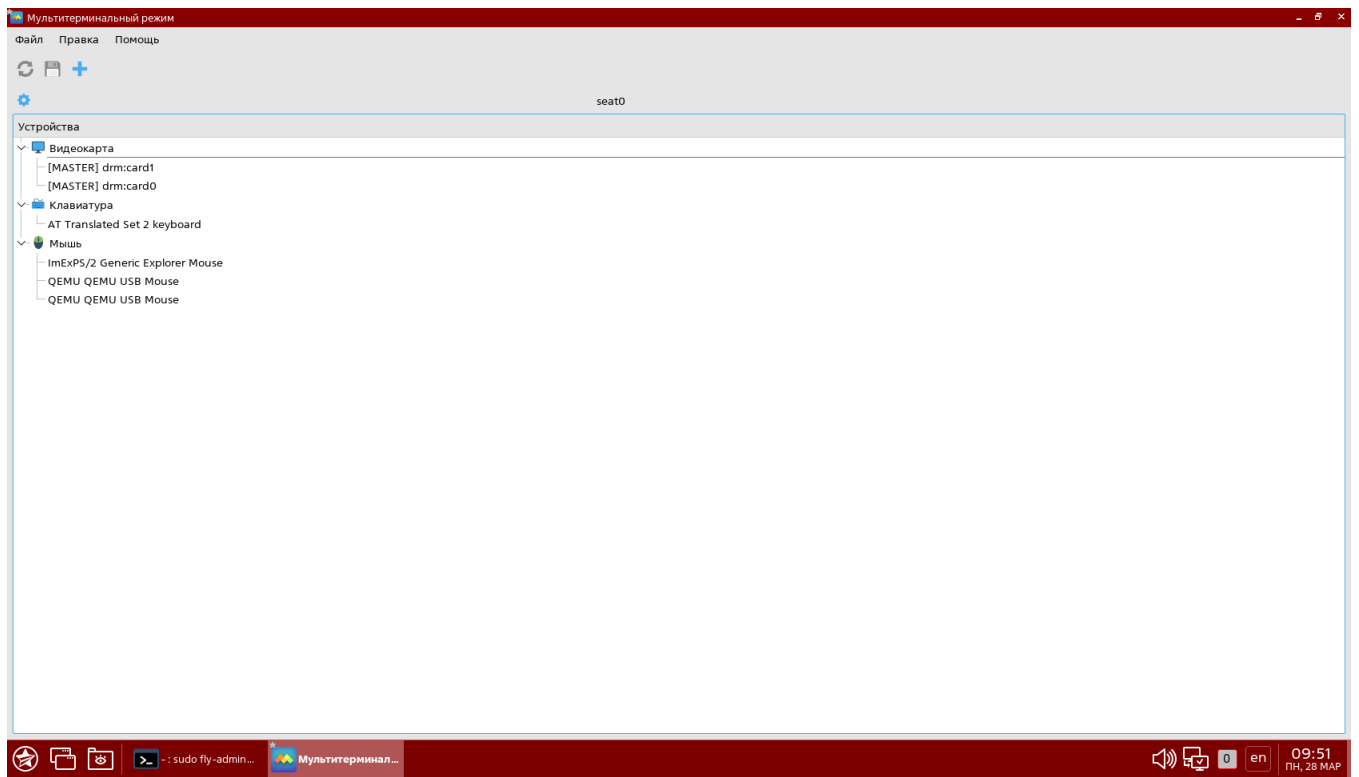
$$\vdots$$

- Astra Linux Special Edition ;
- Intel;
- Nvidia GeForce 1060;
- USB USB .

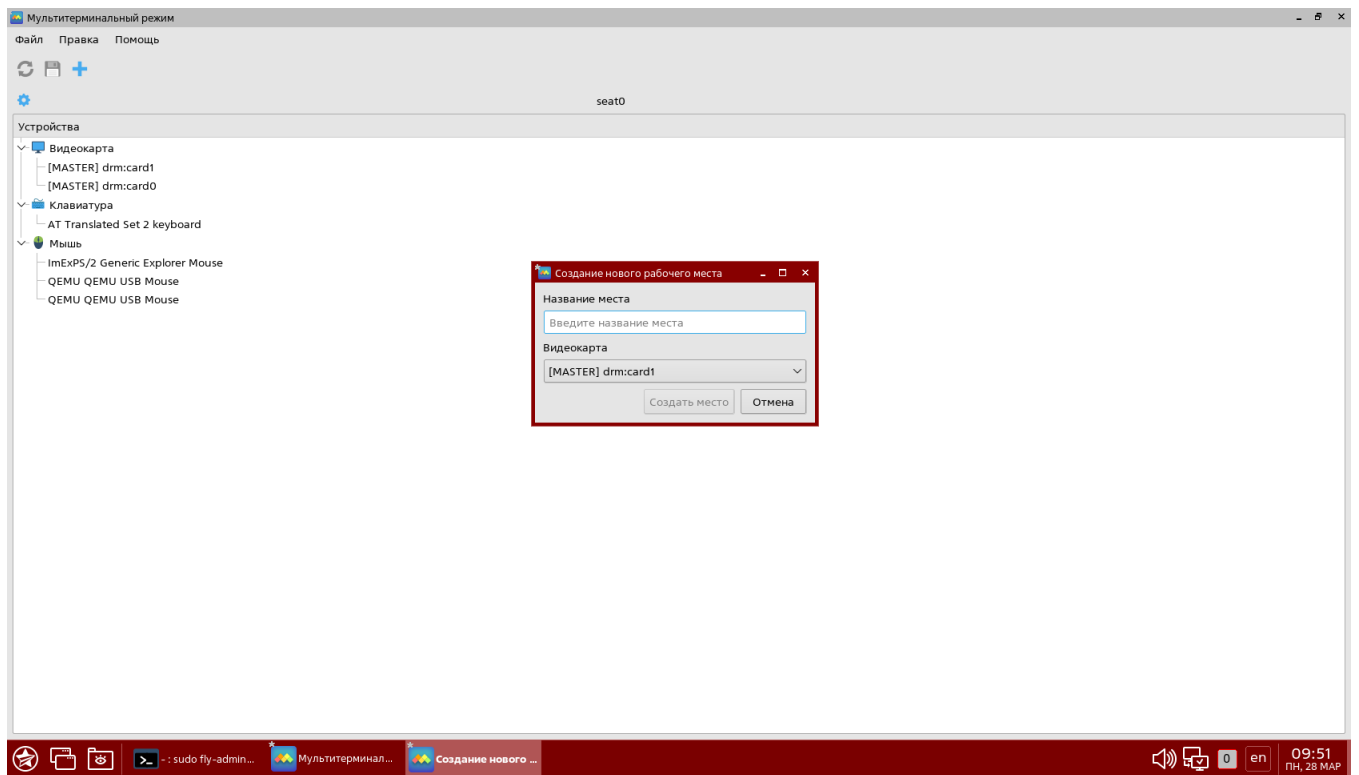
fly-admin-multiseat

 fly-admin-multiseat Astra Linux Special Edition x.7

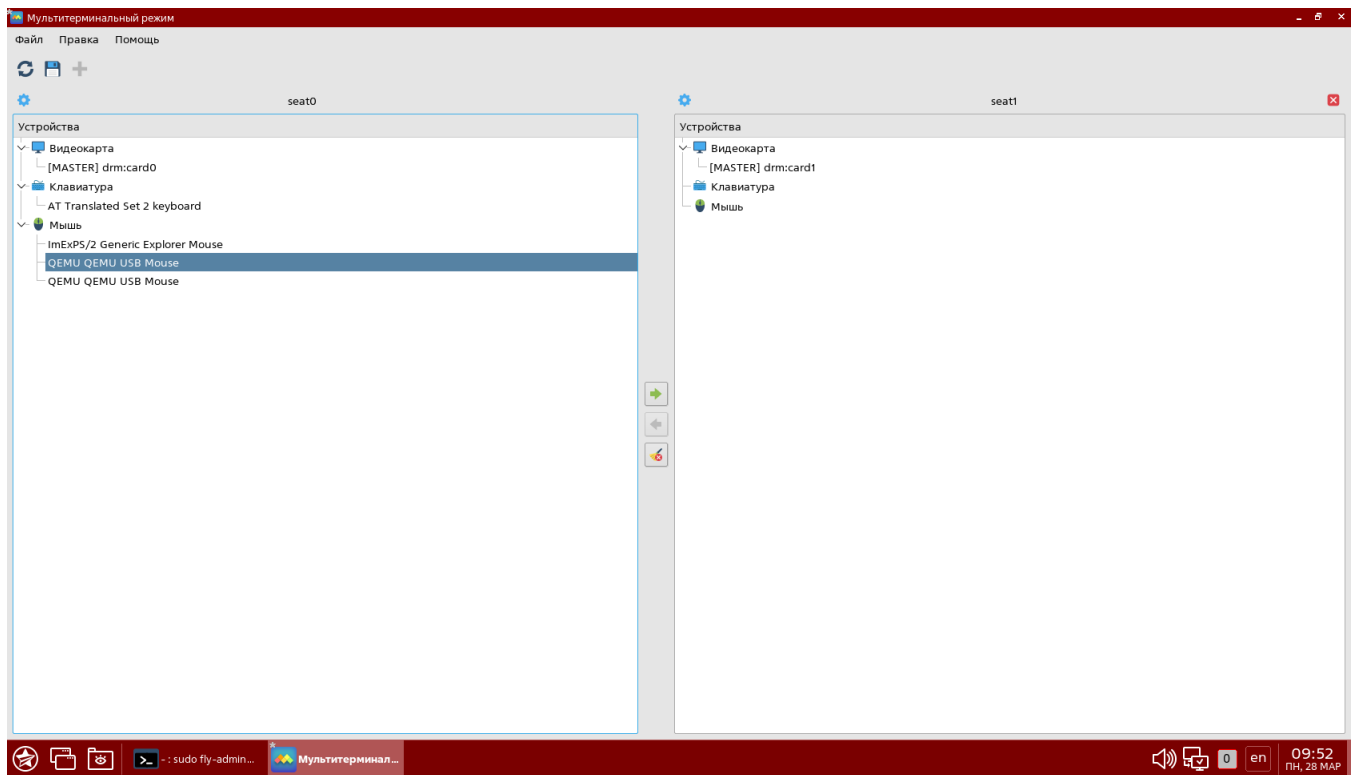
```
fly-admin-multiseat : "" - "" - "" - "" . fly-admin-multiseat :
```



:



:



(seat) .

:

```
lspci
```

```
lsusb
```

/ loginctl. :

```
sudo loginctl list-seats
```

:

```
sudo loginctl seat-status seat0
```

loginctl (,):

sudo loginctl seat-status seat0

seat0

Devices:

```
/sys/devices/LNXSYSTM:00/LNXPWRBN:00/input/input1
input:input1 "Power Button"
/sys/devices/LNXSYSTM:00/LNXXSYBUS:00/PNP0C0C:00/input/input0
input:input0 "Power Button"
/sys/devices/pci0000:00/0000:00:01.0/0000:01:00.0/drm/card0
[MASTER] drm:card0
/sys/devices/pci0000:00/0000:00:01.0/0000:01:00.0/drm/card0/card0-DVI-I-1
[MASTER] drm:card0-DVI-I-1
/sys/devices/pci0000:00/0000:00:01.0/0000:01:00.0/drm/card0/card0-HDMI-A-1
```

```
[MASTER] drm:card0-HDMI-A-1
/sys/devices/pci0000:00/0000:00:01.0/0000:01:00.0/drm/card0/card0-VGA-1
[MASTER] drm:card0-VGA-1
/sys/devices/pci0000:00/0000:00:01.0/0000:01:00.0/drm/renderD128
drm:renderD128
/sys/devices/pci0000:00/0000:00:01.0/0000:01:00.0/graphics/fb0
graphics:fb0 "nouveaudrmfb"
/sys/devices/pci0000:00/0000:00:01.0/0000:01:00.1/sound/card1
sound:card1 "NVIDIA"
/sys/devices/pci0000:00/0000:00:01.0/0000:01:00.1/sound/card1/input23
input:input23 "HDA NVidia HDMI/DP,pcm=3"
/sys/devices/pci0000:00/0000:00:01.0/0000:01:00.1/sound/card1/input24
input:input24 "HDA NVidia HDMI/DP,pcm=7"
/sys/devices/pci0000:00/0000:00:01.0/0000:01:00.1/sound/card1/input25
input:input25 "HDA NVidia HDMI/DP,pcm=8"
/sys/devices/pci0000:00/0000:00:01.0/0000:01:00.1/sound/card1/input26
input:input26 "HDA NVidia HDMI/DP,pcm=9"
/sys/devices/pci0000:00/0000:00:06.0/0000:02:00.0/drm/card1
[MASTER] drm:card1
/sys/devices/pci0000:00/0000:00:06.0/0000:02:00.0/drm/card1/card1-DVI-I-2
[MASTER] drm:card1-DVI-I-2
/sys/devices/pci0000:00/0000:00:06.0/0000:02:00.0/drm/card1/card1-DVI-I-3
[MASTER] drm:card1-DVI-I-3
/sys/devices/pci0000:00/0000:00:06.0/0000:02:00.0/drm/renderD129
drm:renderD129
/sys/devices/pci0000:00/0000:00:06.0/0000:02:00.0/graphics/fb1
graphics:fb1 "nouveaudrmfb"
/sys/devices/pci0000:00/0000:00:1a.0/usb3
usb:usb3
/sys/devices/pci0000:00/0000:00:1a.1/usb4
usb:usb4
/sys/devices/pci0000:00/0000:00:1a.2/usb5
usb:usb5
/sys/devices/pci0000:00/0000:00:1a.7/usb1
usb:usb1
/sys/devices/pci0000:00/0000:00:1a.7/usb1/1-5
usb:1-5
/sys/devices/pci0000:00/0000:00:1a.7/usb1/1-5/1-5.2/1-5.2:1.0/0003:248A:8366.0005/input/input12
input:input12 "Telink SVEN WIRELESS MOUSE Mouse"
/sys/devices/pci0000:00/0000:00:1a.7/usb1/1-5/1-5.2/1-5.2:1.0/0003:248A:8366.0005/input/input13
input:input13 "Telink SVEN WIRELESS MOUSE Consumer Control"
/sys/devices/pci0000:00/0000:00:1a.7/usb1/1-5/1-5.2/1-5.2:1.0/0003:248A:8366.0005/input/input14
input:input14 "Telink SVEN WIRELESS MOUSE System Control"
/sys/devices/pci0000:00/0000:00:1b.0/sound/card0
sound:card0 "Intel"
/sys/devices/pci0000:00/0000:00:1b.0/sound/card0/input15
input:input15 "HDA Intel Front Mic"
/sys/devices/pci0000:00/0000:00:1b.0/sound/card0/input16
input:input16 "HDA Intel Rear Mic"
/sys/devices/pci0000:00/0000:00:1b.0/sound/card0/input17
input:input17 "HDA Intel Line"
/sys/devices/pci0000:00/0000:00:1b.0/sound/card0/input18
input:input18 "HDA Intel Line Out Front"
/sys/devices/pci0000:00/0000:00:1b.0/sound/card0/input19
input:input19 "HDA Intel Line Out Surround"
/sys/devices/pci0000:00/0000:00:1b.0/sound/card0/input20
input:input20 "HDA Intel Line Out CLFE"
/sys/devices/pci0000:00/0000:00:1b.0/sound/card0/input21
input:input21 "HDA Intel Line Out Side"
/sys/devices/pci0000:00/0000:00:1b.0/sound/card0/input22
input:input22 "HDA Intel Front Headphone"
/sys/devices/pci0000:00/0000:00:1d.0/usb6
usb:usb6
/sys/devices/pci0000:00/0000:00:1d.1/usb7
usb:usb7
/sys/devices/pci0000:00/0000:00:1d.1/usb7/7-2/7-2:1.0/0003:C0F4:01B0.0001/input/input5
input:input5 "USB usb keyboard"
/sys/devices/pci0000:00/0000:00:1d.1/usb7/7-2/7-2:1.1/0003:C0F4:01B0.0002/input/input6
input:input6 "USB usb keyboard Consumer Control"
/sys/devices/pci0000:00/0000:00:1d.1/usb7/7-2/7-2:1.1/0003:C0F4:01B0.0002/input/input7
input:input7 "USB usb keyboard System Control"
/sys/devices/pci0000:00/0000:00:1d.2/usb8
usb:usb8
/sys/devices/pci0000:00/0000:00:1d.2/usb8/8-2/8-2:1.0/0003:10D5:0116.0003/input/input8
input:input8 "M02 1.6"
/sys/devices/pci0000:00/0000:00:1d.2/usb8/8-2/8-2:1.1/0003:10D5:0116.0004/input/input10
input:input10 "M02 1.6 System Control"
/sys/devices/pci0000:00/0000:00:1d.2/usb8/8-2/8-2:1.1/0003:10D5:0116.0004/input/input11
input:input11 "M02 1.6 Consumer Control"
```

```

/sys/devices/pci0000:00/0000:00:1d.2/usb8/8-2/8-2:1.1/0003:10D5:0116.0004/input/input9
input:input9 "M02 1.6 Mouse"
/sys/devices/pci0000:00/0000:00:1d.7/usb2
usb:usb2
/sys/devices/platform/vhci_hcd.0/usb10
usb:usb10
/sys/devices/platform/vhci_hcd.0/usb9
usb:usb9
/sys/devices/virtual/misc/kvm
misc:kvm
/sys/devices/virtual/misc/rfkill
misc:rfkill

```



```

. ( ), . . . , .
, .. card0 , -( seat0). , 0 seat0.

```

```

seat1, . :

```

```

sudo loginctl attach seat1 /sys/devices/pci0000:00/0000:00:06.0/0000:02:00.0
/drm/card1

```

```

:
```

```

sudo loginctl seat-status seat1

```

```

seat1
      Devices:
          /sys/devices/pci0000:00/0000:00:06.0/0000:02:00.0/drm
/card1
          [MASTER] drm:card1
          /sys/devices/pci0000:00/0000:00:06.0/0000:02:00.0/drm
/card1/card1-DVI-I-2
          [MASTER] drm:card1-DVI-I-2
          /sys/devices/pci0000:00/0000:00:06.0/0000:02:00.0/drm
/card1/card1-DVI-I-3
          [MASTER] drm:card1-DVI-I-3

```

```

:
```

```

sudo loginctl attach seat1 /sys/devices/pci0000:00/0000:00:1a.7/usb1/1-5/1-
5.2/1-5.2:1.0/0003:248A:8366.0005/input/input12 \
          /sys/devices/pci0000:00/0000:00:1a.7/usb1/1-5/1-
5.2/1-5.2:1.0/0003:248A:8366.0005/input/input13 \
          /sys/devices/pci0000:00/0000:00:1a.7/usb1/1-5/1-
5.2/1-5.2:1.0/0003:248A:8366.0005/input/input14

```

```

:
```

```

sudo loginctl attach seat1 /sys/devices/pci0000:00/0000:00:1d.1/usb7/7-2/7-
2:1.0/0003:C0F4:01B0.0001/input/input5 \
          /sys/devices/pci0000:00/0000:00:1d.1/usb7/7-2/7-
2:1.1/0003:C0F4:01B0.0002/input/input6 \
          /sys/devices/pci0000:00/0000:00:1d.1/usb7/7-2/7-
2:1.1/0003:C0F4:01B0.0002/input/input7

```

```

seat1:

```

```

sudo loginctl seat-status seat1

```

seat1 :

seat1

Devices:

```
/sys/devices/pci0000:00/0000:00:06.0/0000:02:00.0/drm/card1
[MASTER] drm:card1
/sys/devices/pci0000:00/0000:00:06.0/0000:02:00.0/drm/card1/card1-DVI-I-2
[MASTER] drm:card1-DVI-I-2
/sys/devices/pci0000:00/0000:00:06.0/0000:02:00.0/drm/card1/card1-DVI-I-3
[MASTER] drm:card1-DVI-I-3
/sys/devices/pci0000:00/0000:00:1a.7/usb1/1-5/1-5.2/1-5.2:1.0/0003:248A:8366.0005/input/input12
input:input12 "Telink SVEN WIRELESS MOUSE Mouse"
/sys/devices/pci0000:00/0000:00:1a.7/usb1/1-5/1-5.2/1-5.2:1.0/0003:248A:8366.0005/input/input13
input:input13 "Telink SVEN WIRELESS MOUSE Consumer Control"
/sys/devices/pci0000:00/0000:00:1a.7/usb1/1-5/1-5.2/1-5.2:1.0/0003:248A:8366.0005/input/input14
input:input14 "Telink SVEN WIRELESS MOUSE System Control"
/sys/devices/pci0000:00/0000:00:1d.1/usb7/7-2/7-2:1.0/0003:C0F4:01B0.0001/input/input5
input:input5 "USB usb keyboard"
/sys/devices/pci0000:00/0000:00:1d.1/usb7/7-2/7-2:1.1/0003:C0F4:01B0.0002/input/input6
input:input6 "USB usb keyboard Consumer Control"
/sys/devices/pci0000:00/0000:00:1d.1/usb7/7-2/7-2:1.1/0003:C0F4:01B0.0002/input/input7
input:input7 "USB usb keyboard System Control"
```

Astra Linux fly-dm fly-dm. multiseat fly-dm root. /etc/X11/fly-dm/fly-dmrc ServerUID=root:

/etc/X11/fly-dm/fly-dmrc

```
# The user the X-server should run as. Empty results - auto, i.e. 'root' or 'fly-dm' if KMS enabled.
# Default is ""
ServerUID=root
```

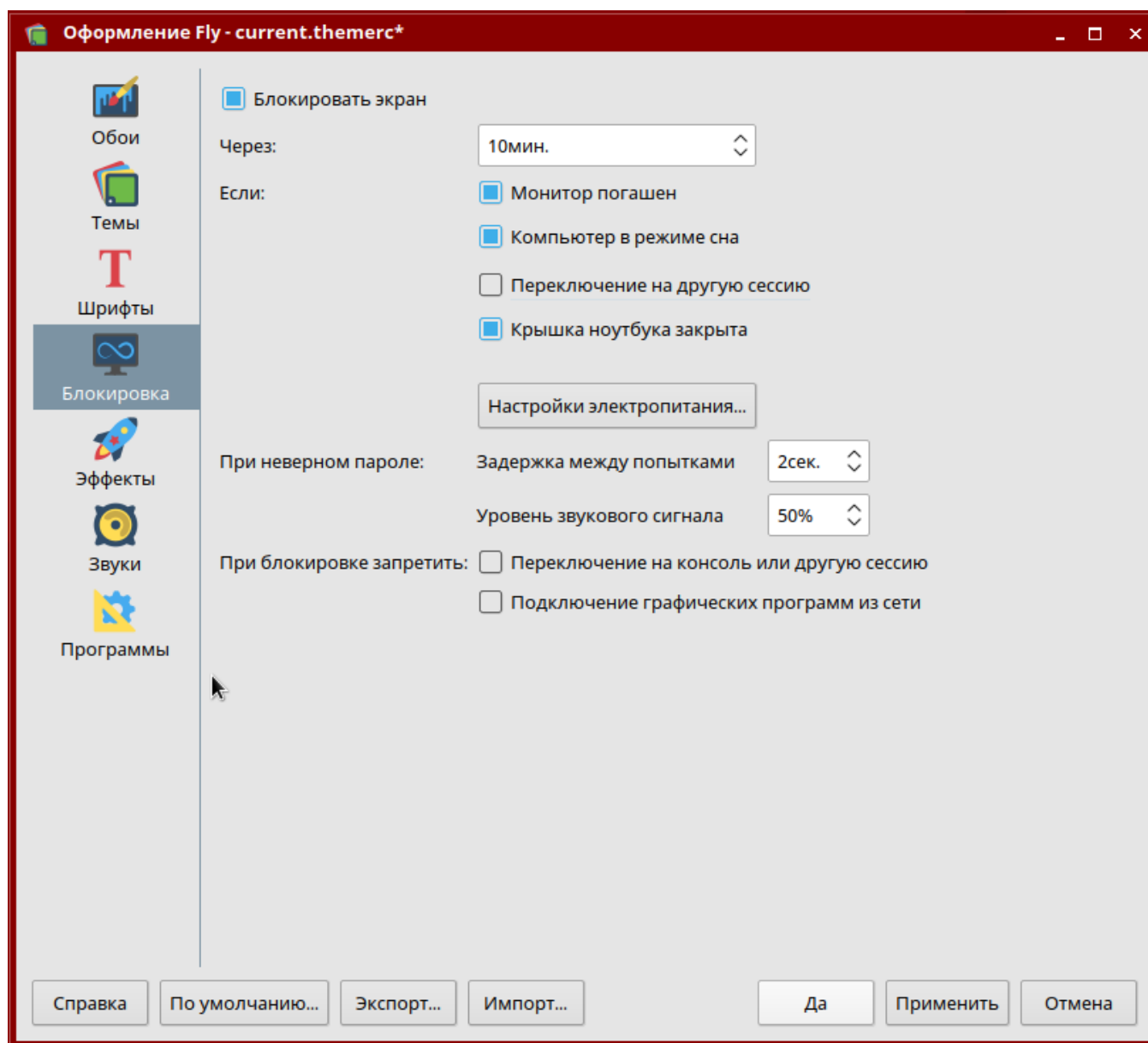
Astra Linux Special Edition 1.6 /etc/X11/fly-dm/fly-dmrc seat1:

/etc/X11/fly-dm/fly-dmrc

```
[X-:1-Core]
ServerArgsLocal=-seat seat1
```

Astra Linux Special Edition 1.7 .

- Astra Linux . Astra Linux Special Edition 1.6 : "" - "", "", "Fly". "" " " .



Astra Linux Special Edition 1.7

:

```
sudo reboot
```

:

1. /etc/X11/fly-dm/fly-dmrc

/etc/X11/fly-dm/fly-dmrc

```
[X-:1-Core]
ServerArgsLocal=-seat seat1
```

2. ;
3. . seat0:

```
sudo loginctl attach seat0 /sys/devices/pci0000:00/0000:00:1d.1/usb7/7-2
/7-2:1.0/0003:C0F4:01B0.0001/input/input5 \
/sys/devices/pci0000:00/0000:00:1d.1/usb7/7-2
/7-2:1.1/0003:C0F4:01B0.0002/input/input6 \
/sys/devices/pci0000:00/0000:00:1d.1/usb7/7-2
/7-2:1.1/0003:C0F4:01B0.0002/input/input7
sudo loginctl attach seat0 /sys/devices/pci0000:00/0000:00:1a.7/usb1/1-5
/1-5.2/1-5.2:1.0/0003:248A:8366.0005/input/input12 \
/sys/devices/pci0000:00/0000:00:1a.7/usb1/1-5
/1-5.2/1-5.2:1.0/0003:248A:8366.0005/input/input13 \
/sys/devices/pci0000:00/0000:00:1a.7/usb1/1-5
/1-5.2/1-5.2:1.0/0003:248A:8366.0005/input/input14
```

4. sudo loginctl seat-status, , , :

```
sudo loginctl attach seat0 /sys/devices/pci0000:00/0000:00:06.0/0000:02:
00.0/drm/card1
```