

# Astra Linux

- 
- 
- mount
- udiskscctl ( udisks2)
- fly-wm ( )
- /etc/fstab.pdac
  - Astra Linux Special Edition: ext2, ext3, ext4,xfs
  -
- - 
  - 
  - USB
  - USB ext4
- 



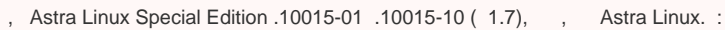
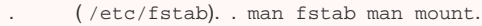
- Astra Linux Special Edition .10015-01 .10015-10 ( 1.7) ( . )
- Astra Linux Special Edition .10152-02 ( 4.7) ( . )
- Astra Linux Special Edition .10015-01 ( 1.6)
- Astra Linux Special Edition .10015-01 ( 1.5)
- Astra Linux Special Edition .10015-16 .1 .2
- Astra Linux Special Edition .10265-01 ( 8.1)
- Astra Linux Common Edition ( )



- •  
• •



- **(SSD):**

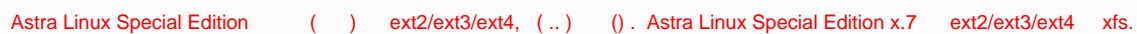


- Astra Linux Special Edition x.7 , , , ;
- Astra Linux Special Edition x.7 , ;

- ```

- .
• - , . USB- CD/DVD-.
• - , .
• : .
  ○ mount -a , /etc/fstab.
  ○ udev.
• - fly-admin-reflex ( , ). , .
• - "" (mount, udisksctl).
• - , ( ).
• - , .
• - , .
• - , .
• - , .
• - , .
• - ( ).
• UUID - ().

```



• « 1 » •

Astra Linux Special Edition :


- ext2/ext3/ext4;
- xfs ( Astra Linux Special Edition x.7);
- vfat;

- ntfs ( );
- iso9660/udf;

## mount

"" mount , . :

- floppy, cdrom, disk ;

 cdrom disk / /dev/srX ( ) /dev/fdX ( ), . floppy Astra Linux Special Edition .

- (/etc/fstab):

◦ , - /media/cdrom0:

```
/dev/sr0 /media/cdrom0 udf,iso9660 user,noauto 0 0
```

◦ , ,;

mount :

1. () -, ;
2. () -,

mount , /etc/fstab . /etc/fstab .

## udisksctl ( udisks2)

udisksctl mount . -, () udisks2.service (. [Ubuntu – Why has Ubuntu moved the default mount points](#)). :

```
/media/<_>/<UUID_>
```

:

```
udisksctl mount -b /dev/<_>
```

:

```
udisksctl unmount -b /dev/<_>
```

udisksctl /etc/polkit-1/localauthority/10-vendor.d/ru.rusbitech.noudisksmount.pkla. :

- Astra Linux Special Edition x.7 x.7.2 :

```
[Disable mount for limited users]
Identity=unix-user:*
Action=org.freedesktop.udisks2.filesystem-mount
ResultActive=no
```

: ;

- Astra Linux Special Edition x.7 x.7.2 Astra Linux Special Edition 1.6 :

```
[Disable mount for limited users]
Identity=unix-user:*
Action=org.freedesktop.udisks2.filesystem-mount
ResultActive=auth_admin
```

:  
:

- [2021-1126SE17 \( 1.7.1\)](#) :

- `astra-mount-lock.service` ( [astra-safepolicy](#) ). , . , :

```
sudo systemctl enable astra-mount-lock
```

- :

- `/etc/polkit-1/localauthority/10-vendor.d/ru.rusbitech.noudisksmount.pkla`, `udisks2` ;
- :

```
sudo astra-mount-lock
```

`/etc/polkit-1/localauthority/10-vendor.d/ru.rusbitech.noudisksmount.pkla`, `udisks2` . , ;

- :

```
sudo astra-mount-lock enable
```

`/etc/polkit-1/localauthority/10-vendor.d/ru.rusbitech.noudisksmount.pkla`, `udisks2` ;

- :

```
astra-mount-lock disable
```

`/etc/polkit-1/localauthority/10-vendor.d/ru.rusbitech.noudisksmount.pkla`, ;

- Astra Linux Special Edition 1.6 `/etc/polkit-1/localauthority/10-vendor.d/ru.rusbitech.noudisksmount.pkla`, ;
- Astra Linux Common Edition `/etc/polkit-1/localauthority/10-vendor.d/ru.rusbitech.noudisksmount.pkla`, .

## fly-wm ( )

fly-wm:

- fly-fm
- fly-reflex-service ( , ).

Astra Linux Special Edition mount. :

- `/etc/fstab`, `/etc/fstab.pdac`;
- , .

:

1. :

```
mkdir /run/user/`id -u`/media/tmp
```

```
id -u
```

. ( ) , `/etc/fstab.pdac` ( [/etc/fstab.pdac](#) );

2. :

```
mount /dev/sda /run/user/`id -u`/media/tmp
```

:

- Astra Linux Special Edition:

- floppy ( ) astra-admins ( /lib/udev/rules.d/91-group-floppy.rules, . );
- Astra Linux Special Edition x.7:
  - 2022-0819SE17 ( 1.7.2) :
    - astra-mount-lock.service. ( . astra-mount-lock astra-safepolicy);
    - mount;
    - astra-mount-lock.service ( . astra-mount-lock astra-safepolicy);
    - astra-mount-lock.service , astra-admin ( /lib/udev/rules.d/91-group-floppy.rules floppy astra-admins );
  - 2021-1126SE17 ( 1.7.1):
    - astra-mount-lock.service. ( . astra-mount-lock astra-safepolicy);
    - :
      - mount;
      - astra-mount-lock.service , astra-admin ( /lib/udev/rules.d/91-group-floppy.rules floppy astra-admins );
    - :
      - udisks2.service;
      - ( /etc/polkit-1/localauthority/10-vendor.d/ru.rusbitech.noudisksmount.pkla);
  - :
    - :
      - mount;
      - udisks2.service;
      - ( /etc/polkit-1/localauthority/10-vendor.d/ru.rusbitech.noudisksmount.pkla);
- Astra Linux Special Edition .10015-01 ( 1.6):
  - mount , floppy astra-admin;
- Astra Linux Common Edition:
  - disk;
  - udisks2 ( udisks2.service) ;

" ".

## /etc/fstab.pdac

mount , /etc/fstab.pdac. :

```
/run/user/<__>/media/<__>
```

/etc/fstab.pdac :

```

i # /etc/fstab.pdac: parsec devices access control mount instructions
#
#<file system>          <mount
point>                  <type>          <options>
<pass>
                                <dump>

### usb flash
/dev/*fat                /run/user/*/media/*    auto                owner,group,noauto,nodev,noexec,
iocharset=utf8,defaults  0 0
/dev/*ntfs*              /run/user/*/media/*    auto                owner,group,noauto,nodev,noexec,
iocharset=utf8,defaults  0 0
/dev/sd*ext*             /run/user/*/media/*    auto                owner,group,nodev,noexec,noauto,
defaults                0 0

### [cd|dvd|bd]rom
/dev/s*udf               /run/user/*/media/*    udf                 owner,group,nodev,noexec,noauto,
defaults                0 0
/dev/s*iso9660           /run/user/*/media/*    iso9660             owner,group,nodev,noexec,noauto,
defaults                0 0

### other
/dev/sd*                 /run/user/*/media/*    auto                owner,group,nodev,noexec,noauto,
iocharset=utf8,defaults  0 0

```

:

- ( , ):
- fly-admin-reflex. ;
- ( /dev/sd\*):
  - vfat ntfs: fly-admin-reflex ;
  - ext2, ext3, ext4, xfs: ext2, ext3, ext4, xfs:
  - iocharset, vfat, ntfs, ext2, ext3, ext4, xfs. ext2, ext3, ext4, xfs , ;
  - iso9660 ( ) , /etc/fstab.pdac :

```
/dev/sr*          /run/user/*/media/*    iso9660,udf    user,
noauto           0          0
```

- NVME /etc/fstab. /etc/fstab.pdac :

```
/dev/nvme*        /run/user/*/media/*    <>    user,
noauto           0          0
```

(sudo) ( ext2, ext3, ext4, xfs) mount sudo.

## Astra Linux Special Edition: ext2, ext3, ext4,xfs

, Astra Linux Special Edition /etc/fstab.pdac, " ", ext2, ext3, ext4, xfs. , , iocharset, :

```
i /dev/sd*        /run/user/*/media/*    auto          owner,group,nodev,noexec,
noauto           0          0
```

vfat , , ntfs , , iocharset.

, ( ) ( ) ext2, ext3, ext4, xfs, :

- ext2, ext3, ext4, xfs , , ;
- vfat ntfs . , , ;



:

- Astra Linux Common Edition;
- Astra Linux Special Edition x.7 x.7.1 ( [2021-0915SE17MD](#) [2021-0915SE47MD](#) ) ;

Astra Linux Special Edition 1.7 [2022-0819SE17 \( 1.7.2\)](#) .

( ) , , ( ) .

. ( ) . , :

- ( , ), ;
- ( , UUID ), .



" — " , . :

```
o , , ;
o " " " " , ;
o " " .
```

, ( ext2, ext3, ext4, xfs Astra Linux x.7), . , , , .

, ( vfat, ntfs).

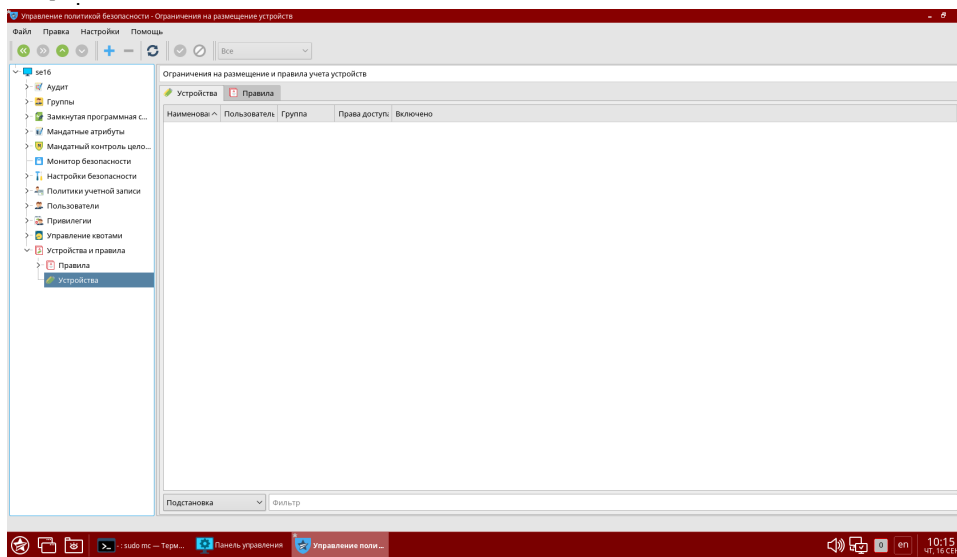
:

- , , , ;
- :
  - o , , ;
  - o , , .

( ):

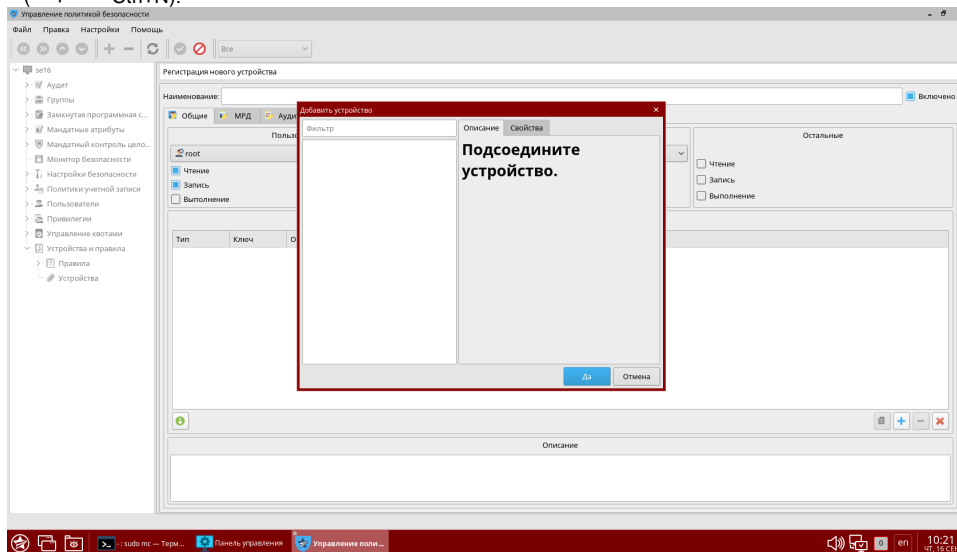


2. " " - "":

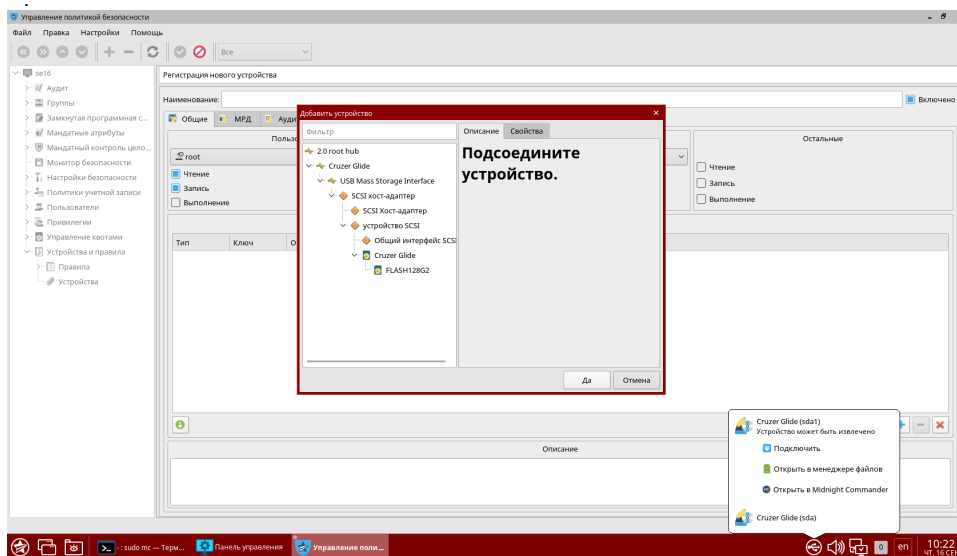


3. , ;

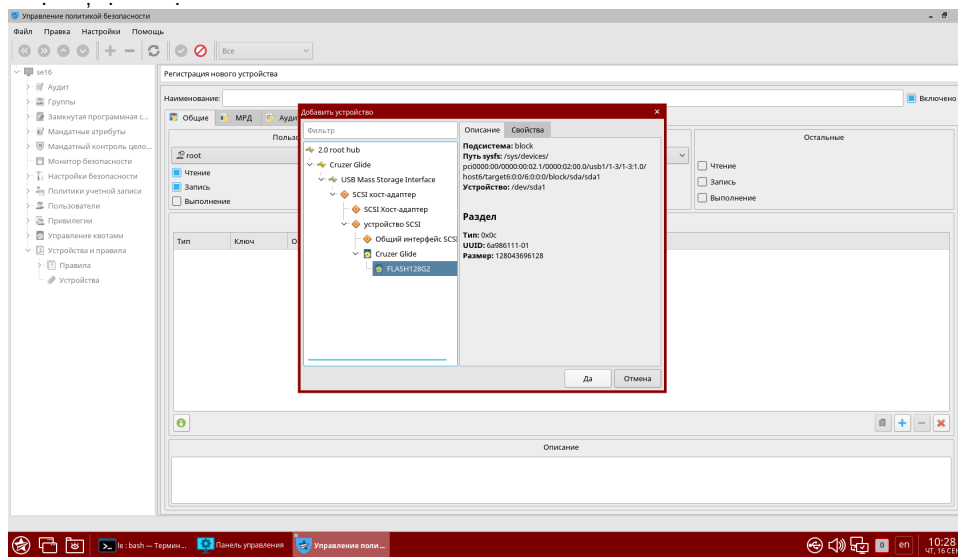
4. ( "+" Ctrl+N):



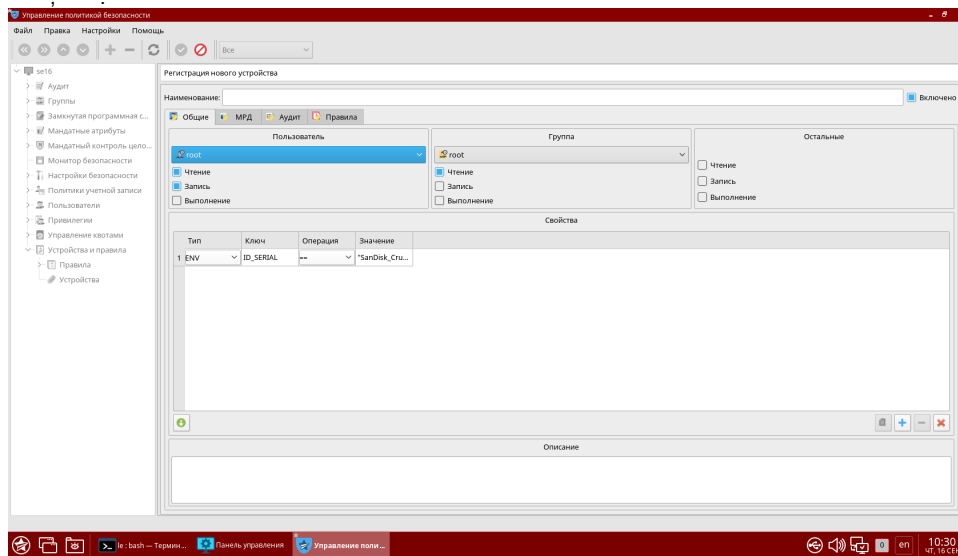
5. :



6.



7.

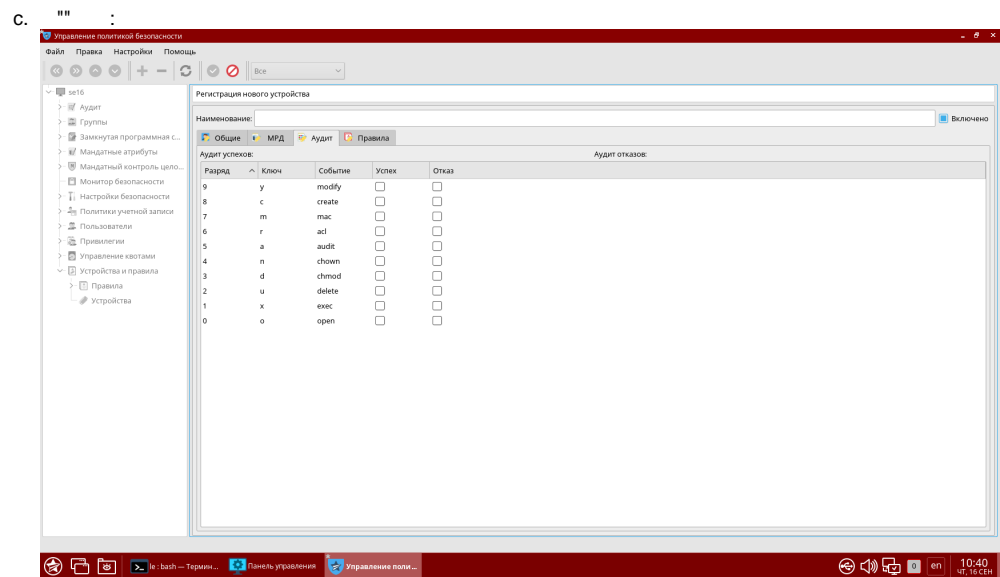
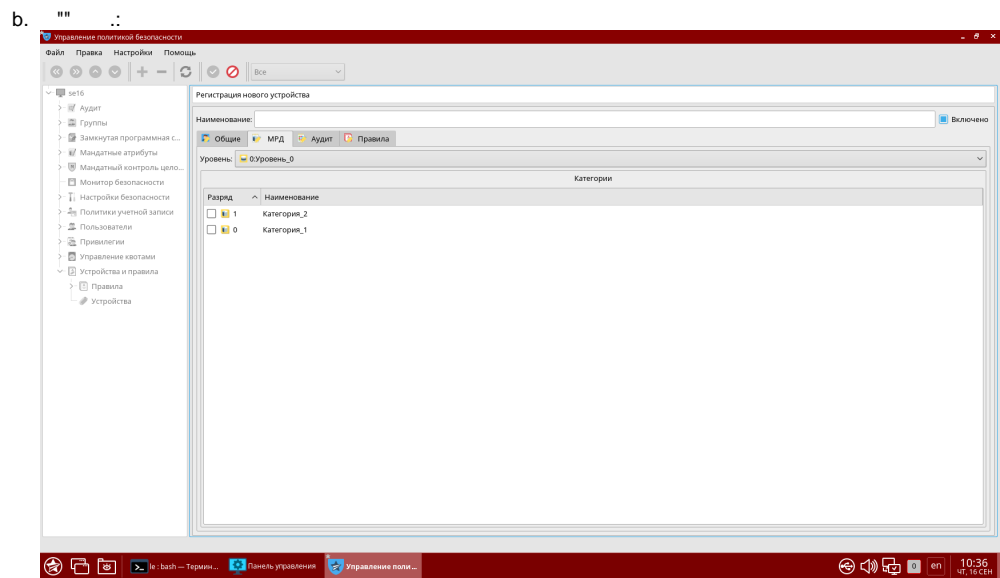


8.

а. """:

- i. ( );
- ii. , ;
- iii. , ;
- iv. . ( ( ENV ) ID\_SERIAL ). ;





d. `""` , ( `.` );

e. , . .



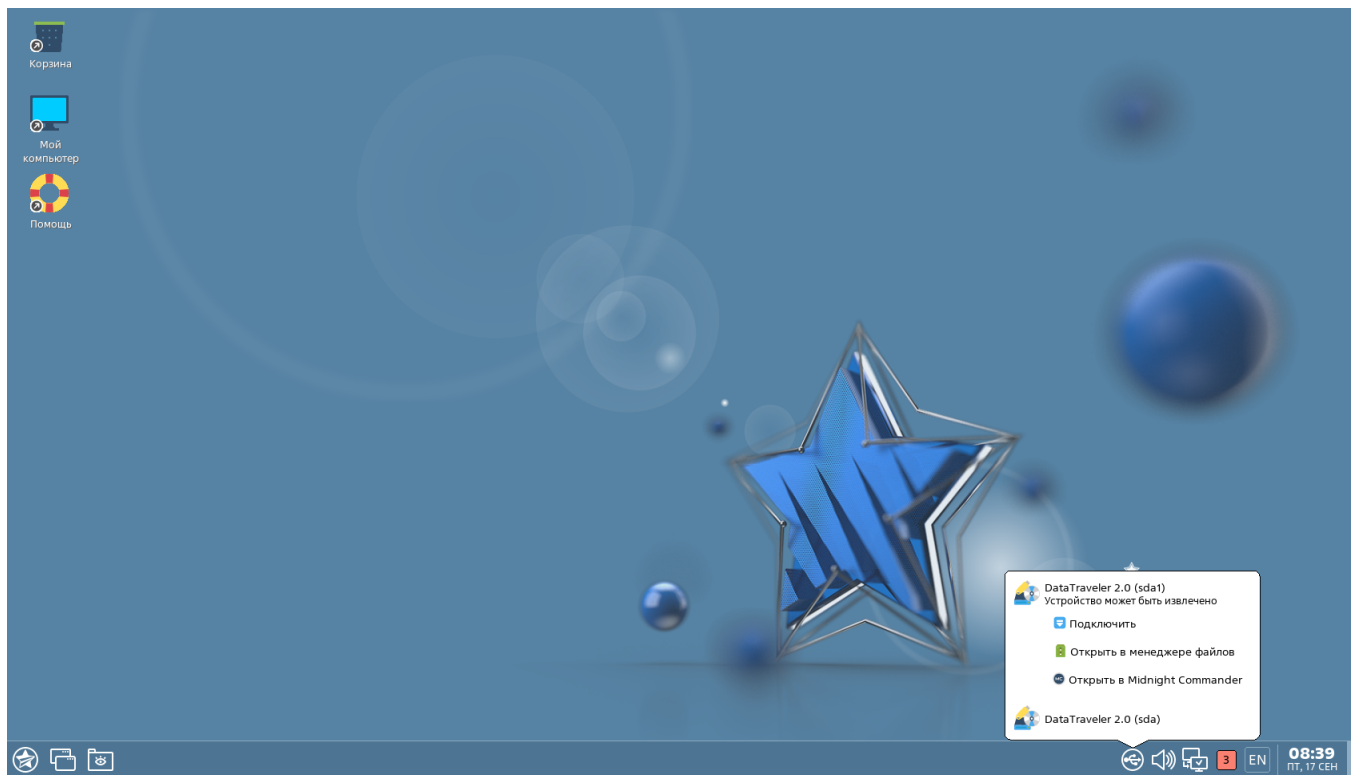
· · ·



· · ·

USB

Astra Linux - :



, "" () (). :

- () /run/user/<UID>/media, UID - ( UID id -u);
- UUID , "by-uuid-", :

```
pdp-ls -lM /run/user/`id -u`/media
```

```
12
drwxrwxrwx--- 1 macuser macuser _0:::0x0 by-uuid-70F46A0B5A206A1A
drwxr-xr-x--- 3 macuser macuser _0:::0x0 by-uuid-94c8364e-f482-4144-
acd9-550208d7a977
drwxr-xr-xm-- 2 macuser macuser _3:::0x0 by-uuid-DCDD-DECE
```

- ext2/ext3/ext4/xfs :
  - , (. USB ext4);
  - , (. USB ext4);
- vfat :
  - c , ;
  - , ;
- ntfs :
  - c , ;
  - ;
- iso9660/udf:
  - ;
  - root;
  - , ;

USB ext4

ext4 :

- - - ( , );
- , ;

:

- ccnr,, /run:

```
sudo mkdir /run/media
```

- () ., /dev/sda1:

```
sudo mount /dev/sda1 /run/media
```

- , ., 3:

```
sudo pdpl-file 3 /run/media
```

- , (. );

- , :

```
sudo chown -R <_>:<_> /run/media
```

- :

```
sudo umount /run/media
```

, , ( USERNAME (, ) DEVICE ( ) LEVELS):



```
#!/bin/bash
USERNAME="macuser"
DEVICE="/dev/sdc1"
LEVELS=( 0 1 2 3 )

dir=`mktemp -d -p /run`
mkfs.ext4 $DEVICE
mount $DEVICE "$dir"
pdpl-file ${LEVELS[-1]}:0:-1:ccnr "$dir"
for level in ${LEVELS[@]} ; do
    mkdir "$dir/$level"
    pdpl-file "$level":0:0:0 "$dir/$level"
done
chown -R ${USERNAME}:${USERNAME} "$dir"
ls -la "$dir"
pdp-ls -M "$dir"
umount "$dir"
rmdir "$dir"
```

astra-safepolicy (. [astra-safepolicy](#)) astra-mount-lock.

:

```
sudo astra-mount-lock enable
```

:

```
sudo astra-mount-lock disable
```

