

Bluetooth Astra Linux

- -
 -
 -
 - Astra Linux
 - Bluetooth
 - : rfkill
 - Bluetooth



- Astra Linux Special Edition .10015-01 (1.7), .10015-10
- Astra Linux Special Edition .10015-17
- Astra Linux Special Edition .10015-37 (7.7)
- Astra Linux Special Edition .10015-03 (7.6)
- Astra Linux Special Edition .10152-02 (4.7)
- Astra Linux Special Edition .10015-01 (1.6)
- Astra Linux Special Edition .10015-16 . 1
- Astra Linux Common Edition 2.12

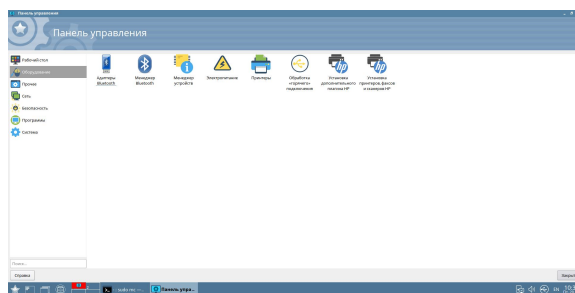


, . bluman Astra Linux Special Edition .10015-01 (x.7) (. Astra Linux Special Edition x.7: ,), Astra Linux Common Edition.

bluman Bluetooth Astra Linux Common Edition, .

bluman (. synaptic)

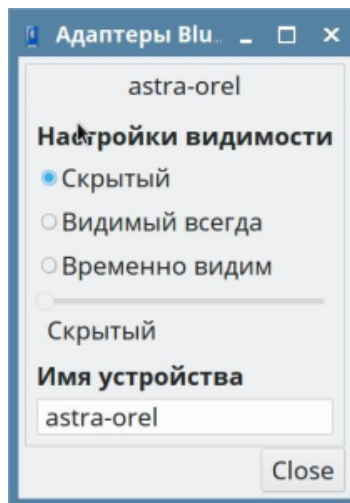
```
sudo apt install bluman
```



- :
 - Bluetooth: "" - "" - "" - " Bluetooth";
 - Bluetooth: "" - "" - "" - " Bluetooth";
- (Bluetooth);

:

- , ;
- ;



:

- "" ,

```

• ( " " );
• ( " " - " " );
• :
• ( " " - " " );

( " " - " " " " );

```

Astra Linux

- , , Bluetooth, Astra Linux .
- Astra Linux :
 - " " "
 - "Default Action"
 - " " ;
- , , ;
- Astra Linux
 - " "
 - " "
 - " "
 - "Default Action"
 - .

Bluetooth

: rfkill

:

```
sudo apt install rfkill
```

:

```
sudo rfkill list
```

:

- , ;
- ;
- ;

.

rfkill, :

```
rfkill block 0
```

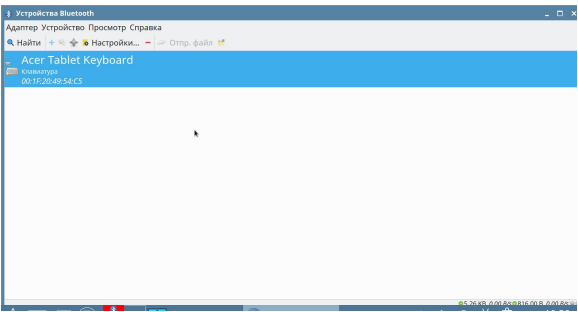
```
rfkill unblock 0
```

Bluetooth

Bluetooth bluetoothctl.

```
sudo bluetoothctl
```

. help:





sudo bluetoothctl

```
[NEW] Controller 00:15:83:03:77:F2 astra-orlel [default]
[bluetooth]# help
Available commands:
list List available controllers
show [ctrl] Controller information
select <ctrl> Select default controller
devices List available devices
paired-devices List paired devices
power <on/off> Set controller power
pairable <on/off> Set controller pairable mode
discoverable <on/off> Set controller discoverable mode
agent <on/off/capability> Enable/disable agent with given
capability
default-agent Set agent as the default one
advertise <on/off/type> Enable/disable advertising with given
type
set-advertise-uuids [uuid1 uuid2 ...] Set advertise uuids
set-advertise-service [uuid][data=[xx xx ...]] Set advertise
service data
set-advertise-manufacturer [id][data=[xx xx ...]] Set advertise
manufacturer data
set-advertise-tx-power <on/off> Enable/disable TX power to
be advertised
set-scan-filter-uuids [uuid1 uuid2 ...] Set scan filter uuids
set-scan-filter-rssi [rssi] Set scan filter rssi, and clears
pathloss
set-scan-filter-pathloss [pathloss] Set scan filter pathloss, and
clears rssi
set-scan-filter-transport [transport] Set scan filter transport
set-scan-filter-clear Clears discovery filter.
scan <on/off> Scan for devices
info [dev] Device information
pair [dev] Pair with device
trust [dev] Trust device
untrust [dev] Untrust device
block [dev] Block device
unblock [dev] Unblock device
remove <dev> Remove device
connect <dev> Connect device
disconnect [dev] Disconnect device
list-attributes [dev] List attributes
set-alias <alias> Set device alias
select-attribute <attribute> Select attribute
attribute-info [attribute] Select attribute
read Read attribute value
write <data=[xx xx ...]> Write attribute value
notify <on/off> Notify attribute value
register-profile <UUID ...> Register profile to connect
unregister-profile Unregister profile
version Display version
quit Quit program
```