

# Astra Linux Special Edition 1.5

- [Windows](#) [Linux](#)
  - [XDMCP](#) [X-](#) [Windows](#)
  - [RDP](#)
  - [RDP](#) [vino](#)
- [Astra](#) [Windows](#)
  - [XfreeRDP](#)
- [Linux](#) [Linux](#)
  - [VNC](#)
  - [ssh](#)
  - [XDMCP](#)
- [Remmina](#)

## Windows Linux

### XDMCP X- Windows

 xrdp, . windows

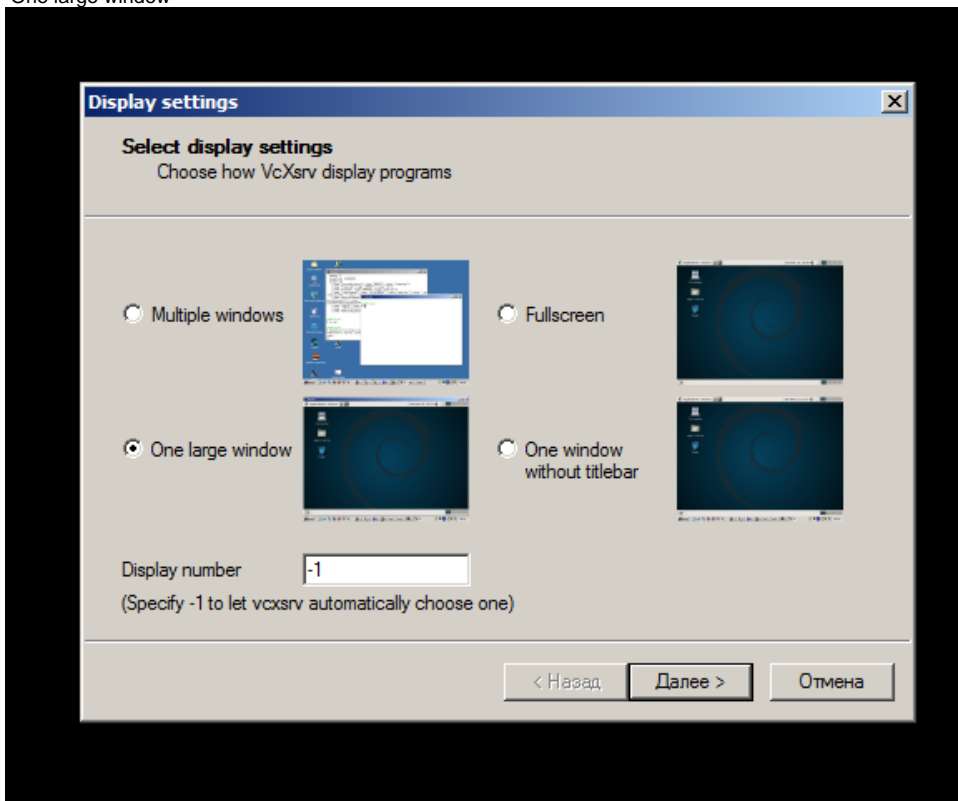
windows : : [VcXsrv](#)

 VcXsrv Windows7 c KB2999226. Service Pack1 Windows7 rdp, 1.09.2016 rdp .

Astra-Linux /etc/X11/fly-dm/Xaccess localhost \*, fly-dm.

windows **Xlaunch**

One large window



XDMCP

Client startup

Select how to start clients

☐

Start no client

This will just start the xserver. You will be able to start local clients later.

☐

Start a program

This will start a local or remote program which will connect to the xserver. You will be able to start local clients later too. Remote programs are started using SSH.

☒

Open session via XDMCP

This will start a remote XDMCP session. Starting local clients later is limited. This option is not available with the "Multiple windows" mode.

< Назад

Далее >

Отмена

XDMCP settings

Configure a remote XDMCP connection

☐

Connect to host

☐ Use indirect connect

☒

Search for hosts (broadcast)

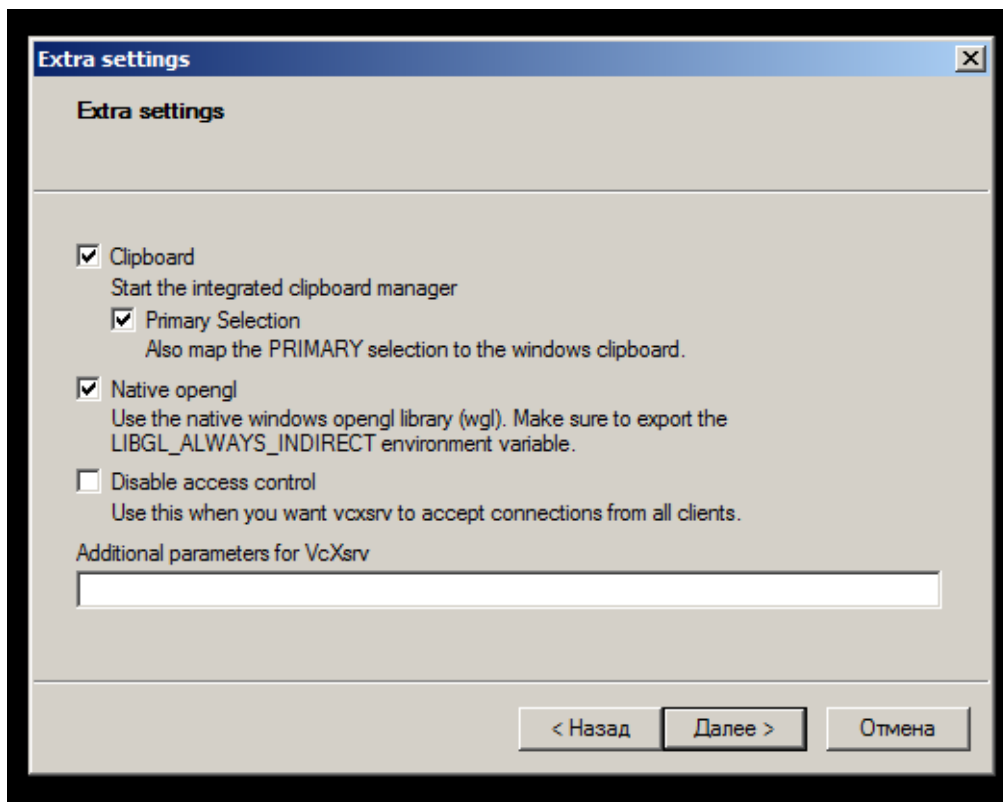
Some XDMCP servers must be configured to allow remote connections. Please check the documentation about configuring XDMCP servers.

☐ Terminate on server reset.

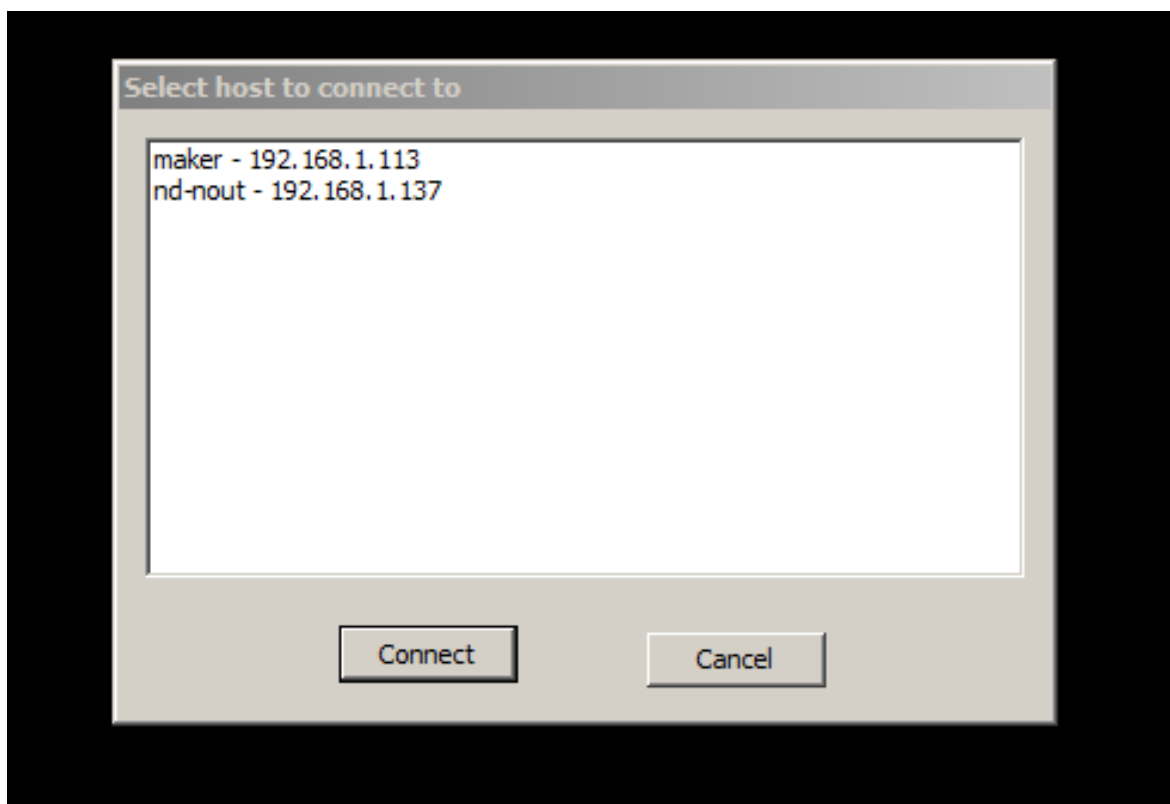
< Назад

Далее >

Отмена



, XDMCP



RDP

xrdp:

[xrdp.tar.gz](#)

:

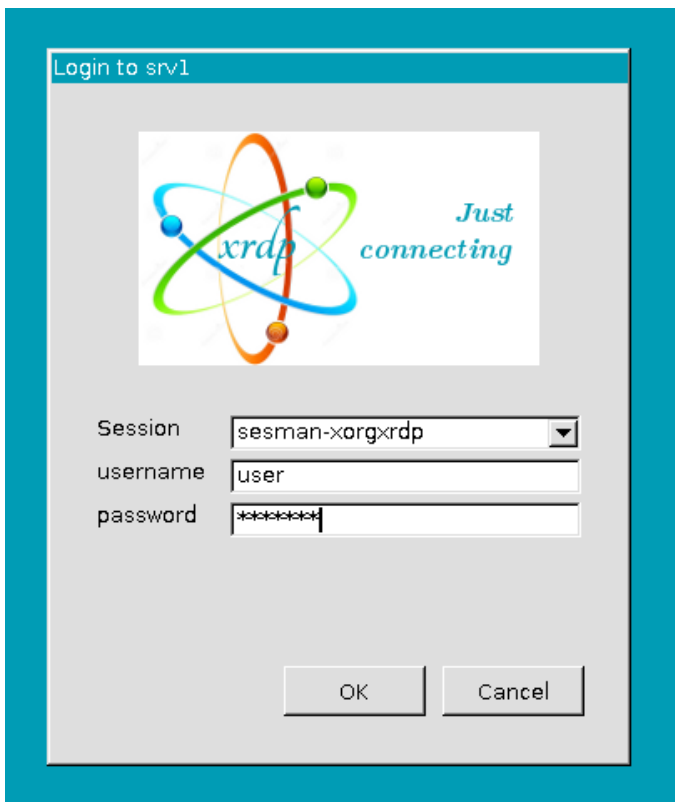
```
tar xvf /xrdp.tar.gz -C /tmp/
```

2 xrdp:

```
sudo dpkg -i /tmp/xrdp/*.deb
```

mstsc

```
" " "session-xorgxrdp"
```



, ""

.

## RDP vino



xrdp vino, " " . . .

P.S. Astra Linux Special Edition .10015-01 ( 1.6).

vino libtelepathy\_glib:

[vino\\_3.20.2-1astra1\\_amd64.deb](#)

[libtelepathy-glib0\\_0.18.2-2\\_amd64.deb](#)

vino :

```
sudo dpkg -i ~/vino_3.20.2-1astra1_amd64.deb
```

```
sudo dpkg -i ~/libtelepathy-glib0_0.18.2-2_amd64.deb
```

```
sudo apt-get install -f
```

vnc-.

( ) vnc- :

/usr/lib/vino/vino-server

vnc-.

, vnc- , , libglib2.0-bin

```
sudo apt-get install libglib2.0-bin
```

:

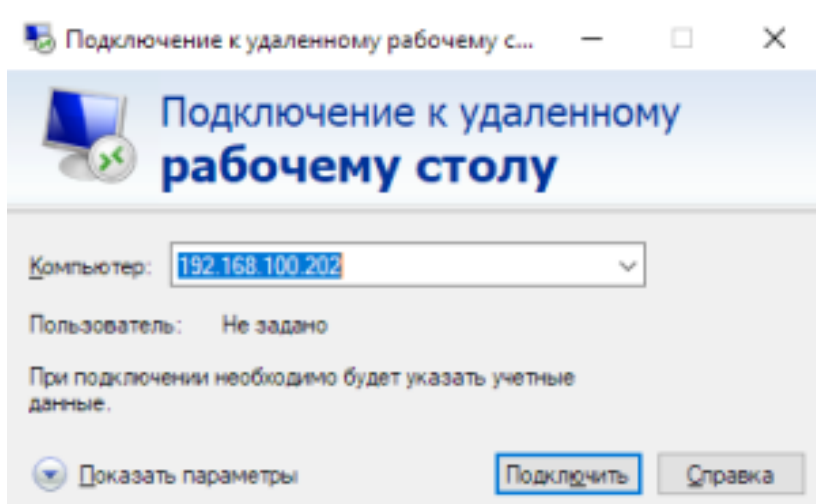
```
gsettings set org.gnome.Vino authentication-methods "['vnc']"
```

```
gsettings set org.gnome.Vino vnc-password "$(echo -n "" | base64)"
```

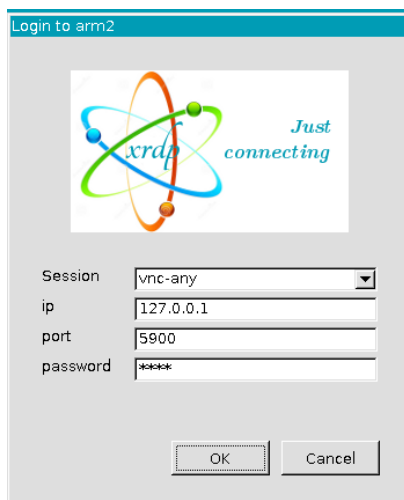
vnc- .

vnc-.

rdp , ip- :



, vnc-any, ip- , :



# Astra Windows

## XfreeRDP

(Windows):

« » -> « » -> « ».

(Astra):

```
xfreerdp <ip >
```

# Linux Linux

## VNC

(Astra):

VNC:

```
/usr/lib/vino/vino-server
```

(Astra):

```
xvnc4viewer
```

:

VNC-

## ssh

/etc/ssh/sshd\_config

**/etc/ssh/sshd\_config**

```
X11Forwarding yes
X11UseLocalhost no
```

```
/etc/init.d/ssh restart
```

/etc/ssh/ssh\_config:

**/etc/ssh/ssh\_config**

```
ForwardX11 yes
ForwardX11 Trusted yes
```

:

```
ssh -X <ip >
```

## XDMCP

: fly-dm

: fly-dm

Astra-Linux /etc/X11/fly-dm/Xaccess localhost \*

#### /etc/X11/fly-dm/Xaccess

```
# In all cases, xdm uses the first entry which matches the terminal;
# for IndirectQuery messages only entries with right hand sides can
# match, for Direct and Broadcast Query messages, only entries without
# right hand sides can match.
#
*                                #any host can get a login window
#
```

fly-dm:

```
sudo /etc/init.d/fly-dm restart
```