

x2go

- - x2go
- x2go Astra Linux
 -
 -
- x2go Windows
 - Windows
 - x2go Windows



:

- Astra Linux Special Edition .10015-01 (1.7), .10015-10
- Astra Linux Special Edition .10015-17
- Astra Linux Special Edition .10015-37
- Astra Linux Special Edition .10015-03 (7.6)
- Astra Linux Special Edition .10152-02 (4.7)
- Astra Linux Special Edition .10015-01 (1.6) (Astra Linux Common Edition)
- Astra Linux Special Edition .10015-16 . 1 (Astra Linux Common Edition)
- Astra Linux Common Edition 2.12.19



!

Astra Linux Special Edition x.7 Astra Linux Special Edition 1.6 Astra Linux, . . , Astra Linux Special Edition.



!

x2go () .



x2go - Linux, Linux NX technology. Linux Windows, ssh.

x2go - . . , (. : TeamViewer), .

x2go: <https://wiki.x2go.org/>

windows: <https://wiki.x2go.org/doku.php/doc:installation:x2goclient>

x2go: <https://wiki.x2go.org/doku.php/wiki:repositories:debian>

Astra Linux Special Edition x.7 x2goserver synaptic :

```
sudo apt install x2goserver
```

Astra Linux Special Edition 1.6 Astra Linux Common Edition Astra Linux Common Edition.



x2go, . . , x2go :

- /etc/systemd/logind.conf :

```
KillUserProcesses=no
```

- .

x2go

x2go :

- x2goserver-printing (Astra Linux Special Edition x.7 [2021-1126SE17 \(1.7.1\)](#) Astra Linux Common Edition);
- cups-x2go (Astra Linux Special Edition x.7, Astra Linux Common Edition).

::

```
sudo apt install x2goserver x2goserver-printing cups-x2go
```

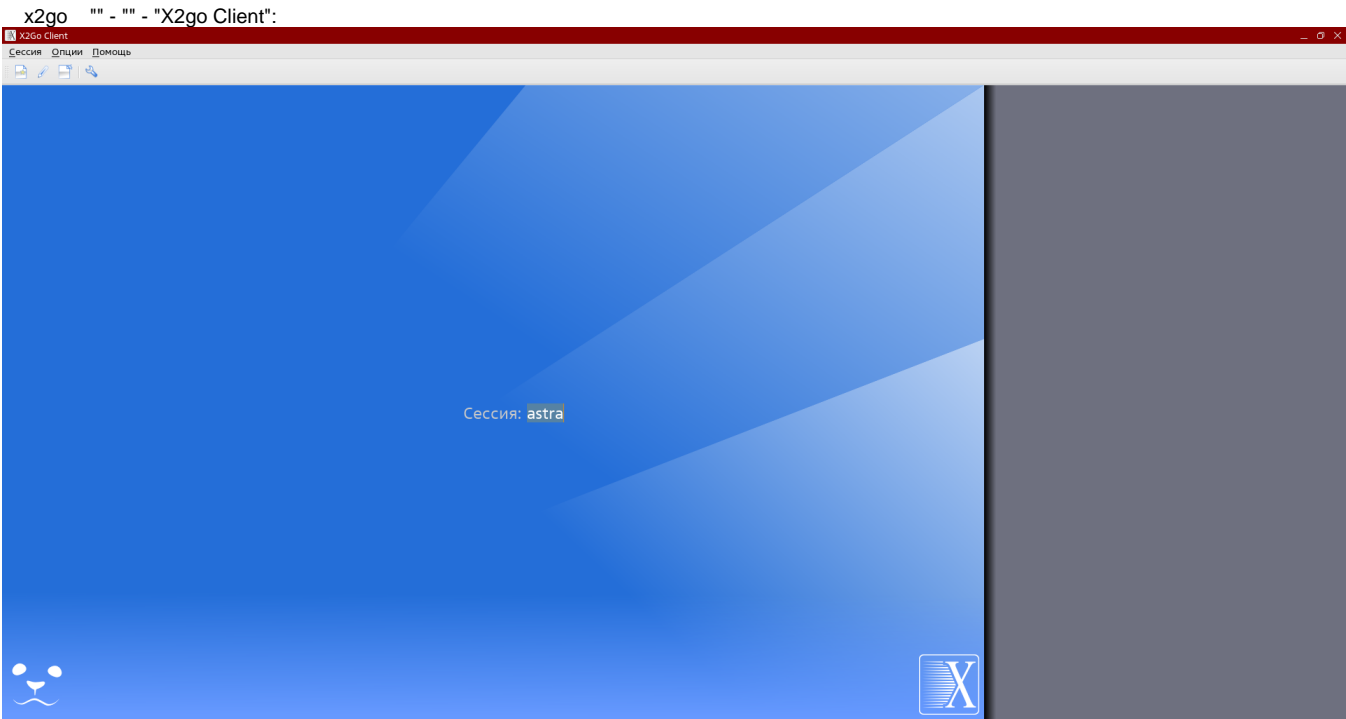
x2go Virtual_X2Go_printer.

x2go Astra Linux

x2go Astra Linux x2goclient. Astra Linux Special Edition x.7 x2goclient [synaptic](#) :

```
sudo apt install x2goclient
```

Astra Linux Special Edition 1.6 Astra Linux Common Edition Astra Linux Common Edition.



:

1. :
 - a. (" - ").
 - b. .
 - c. .
2. :
 - a. ,.
 - b. .
 - c. "".

x2go Windows

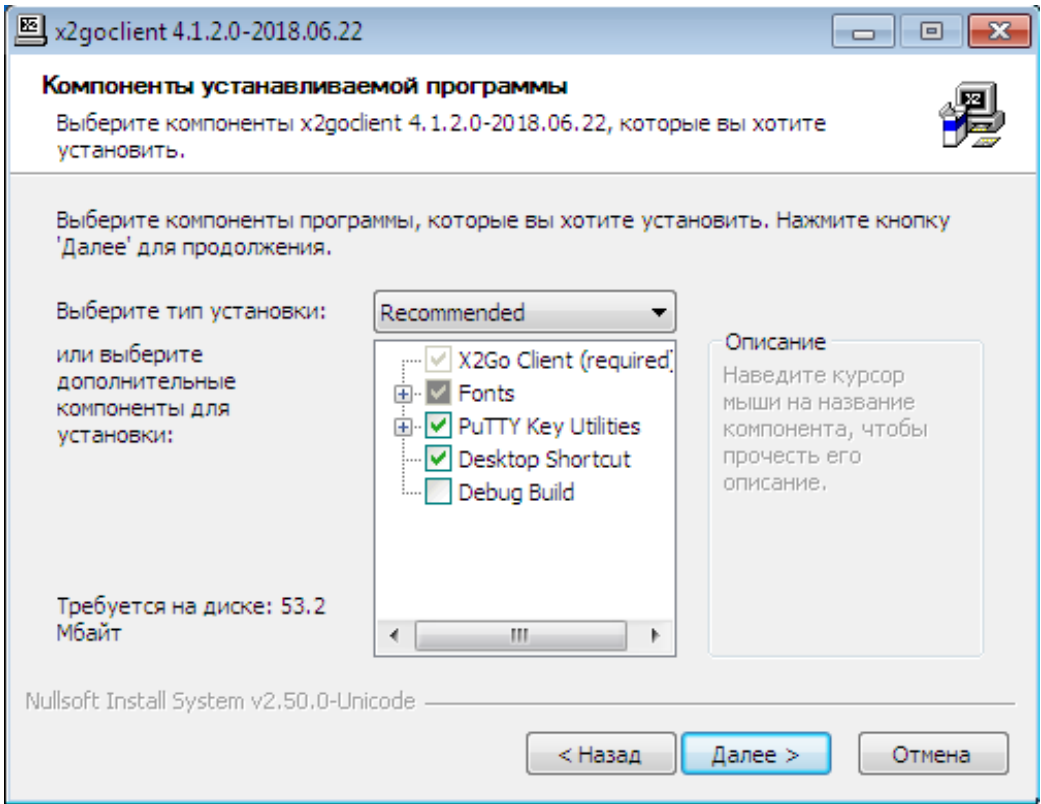
x2go Windows



Windows !

x2go Windows.

, "Recommended":

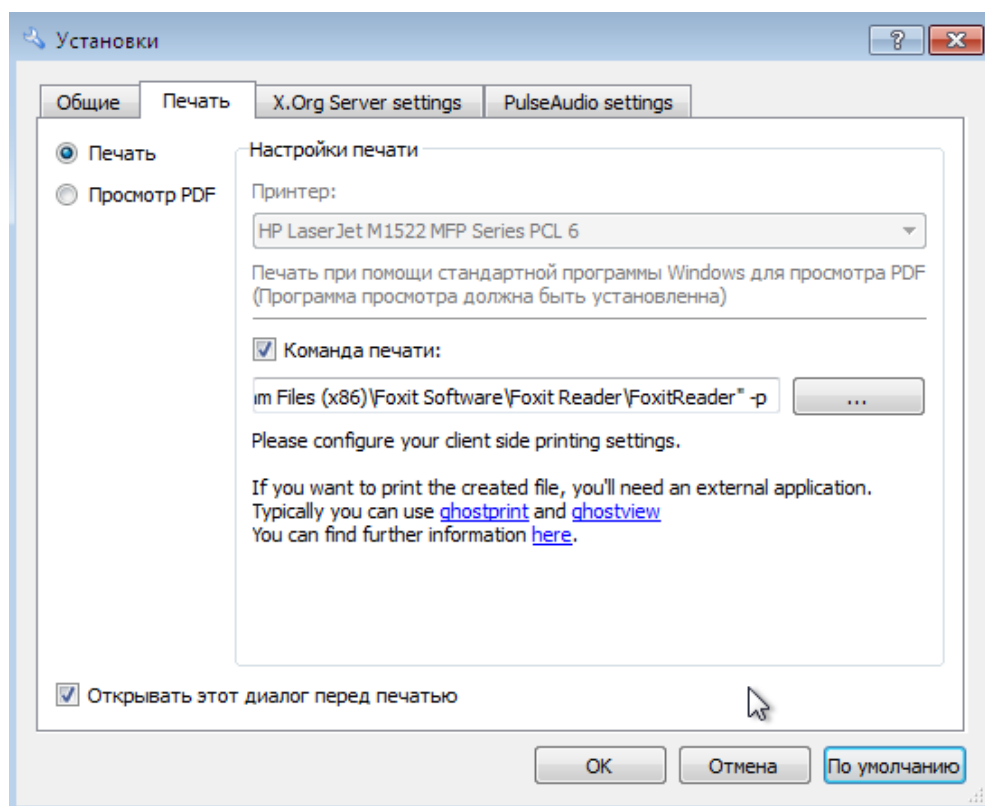


Windows

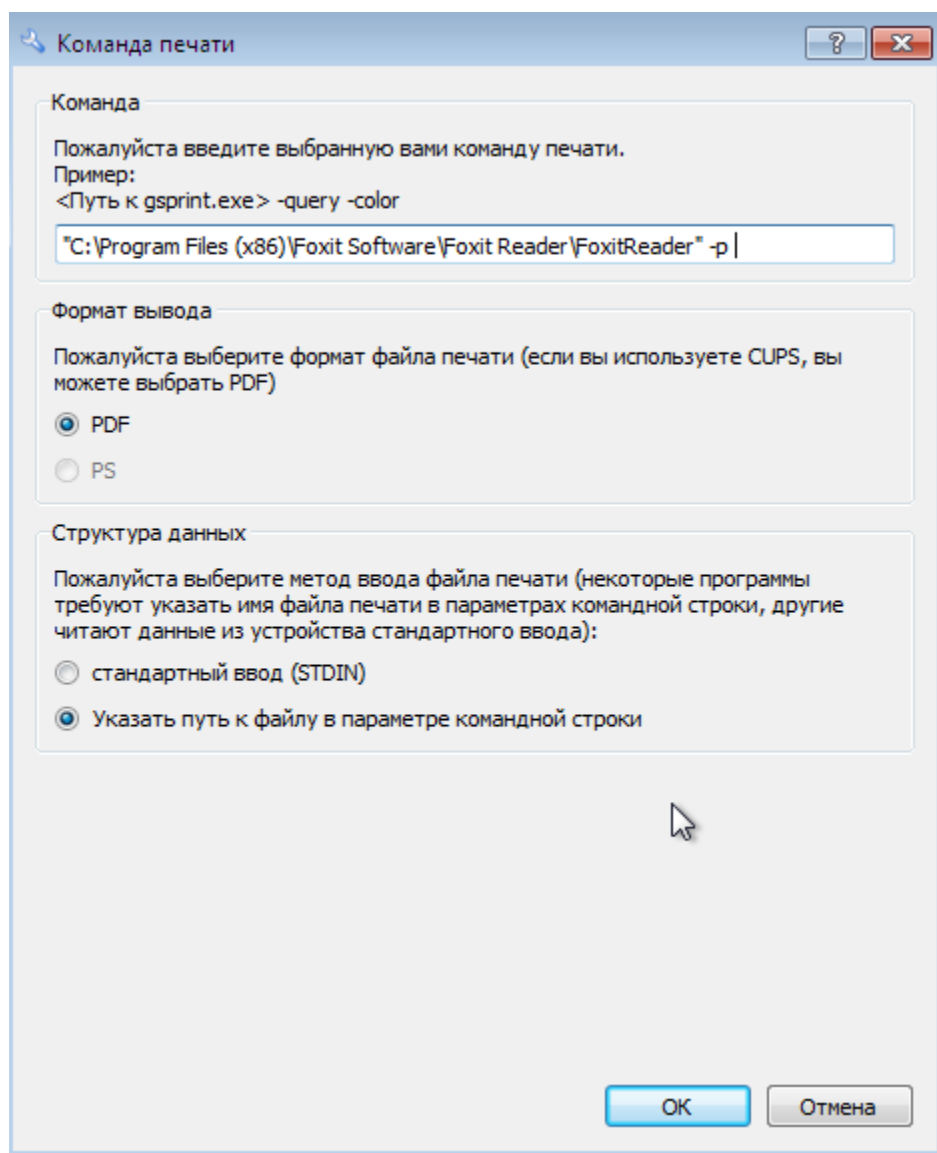
PDF. [Foxit Reader](#).

x2go . "" - "", ""

"..."



(Foxit Reader "-", PDF, - " "



x2go Windows


2go " ".

:

Установки сессии - Astra Linux

Сессия Соединение Ввод/Вывод Медиа Экспорт каталогов

Имя сессии: Astra Linux

 << изменить значок

Расположение: /

Сервер

Хост: 192.168.122.29

Пользователь: client1

SSH порт: 22

RSA/DSA ключ для ssh соединения:

☐ Try auto login (via SSH Agent or default SSH key)

☐ Авторизация Kerberos 5 (GSSAPI)

☐ Делегация GSSAPI на сервер

☐ Использовать прокси сервер для SSH соединения

Тип сессии

Другой оконный менеджер Команда: fly-wm

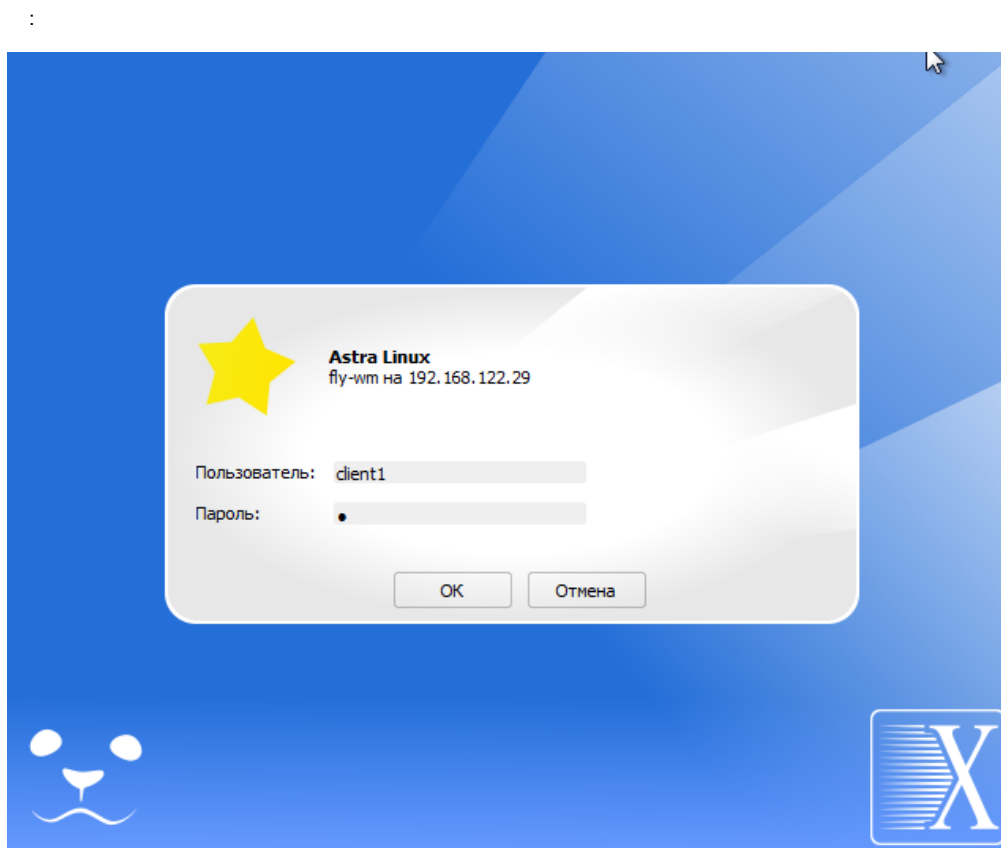
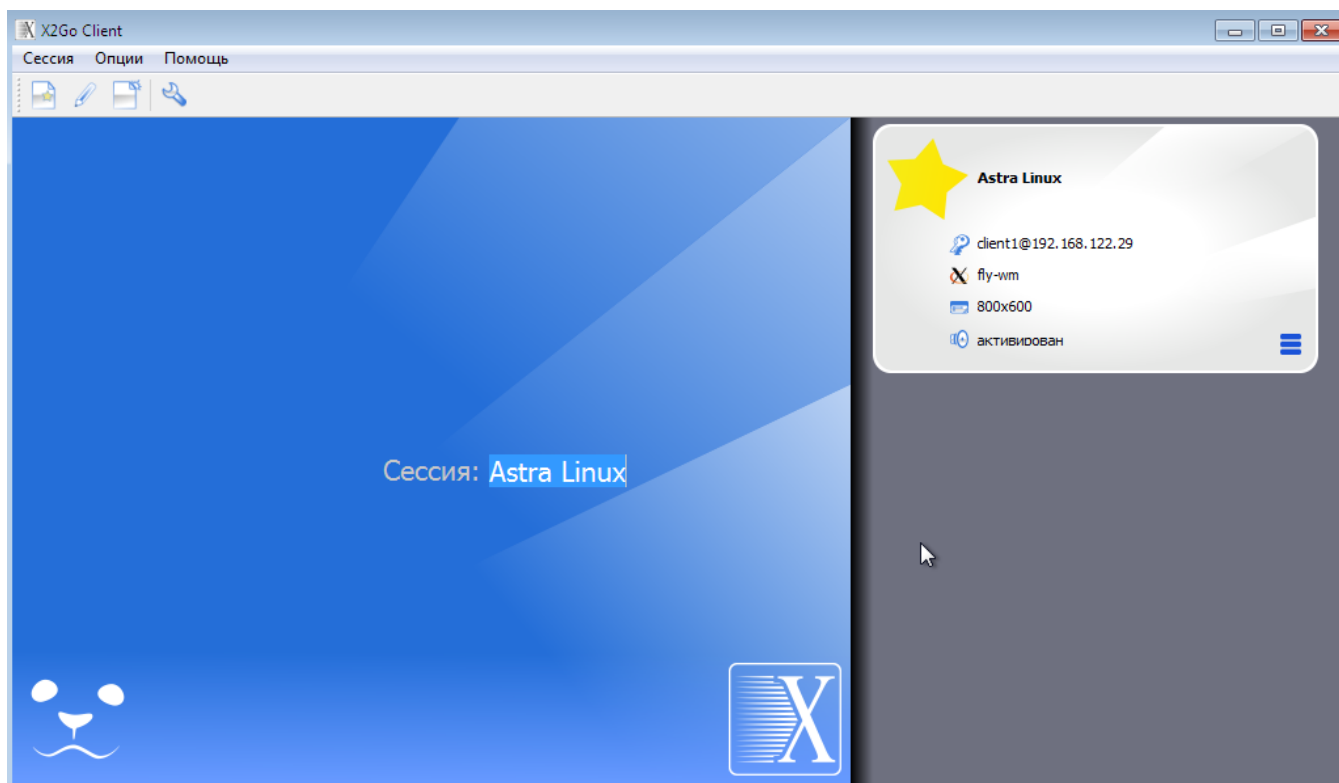
OK Отмена По умолчанию

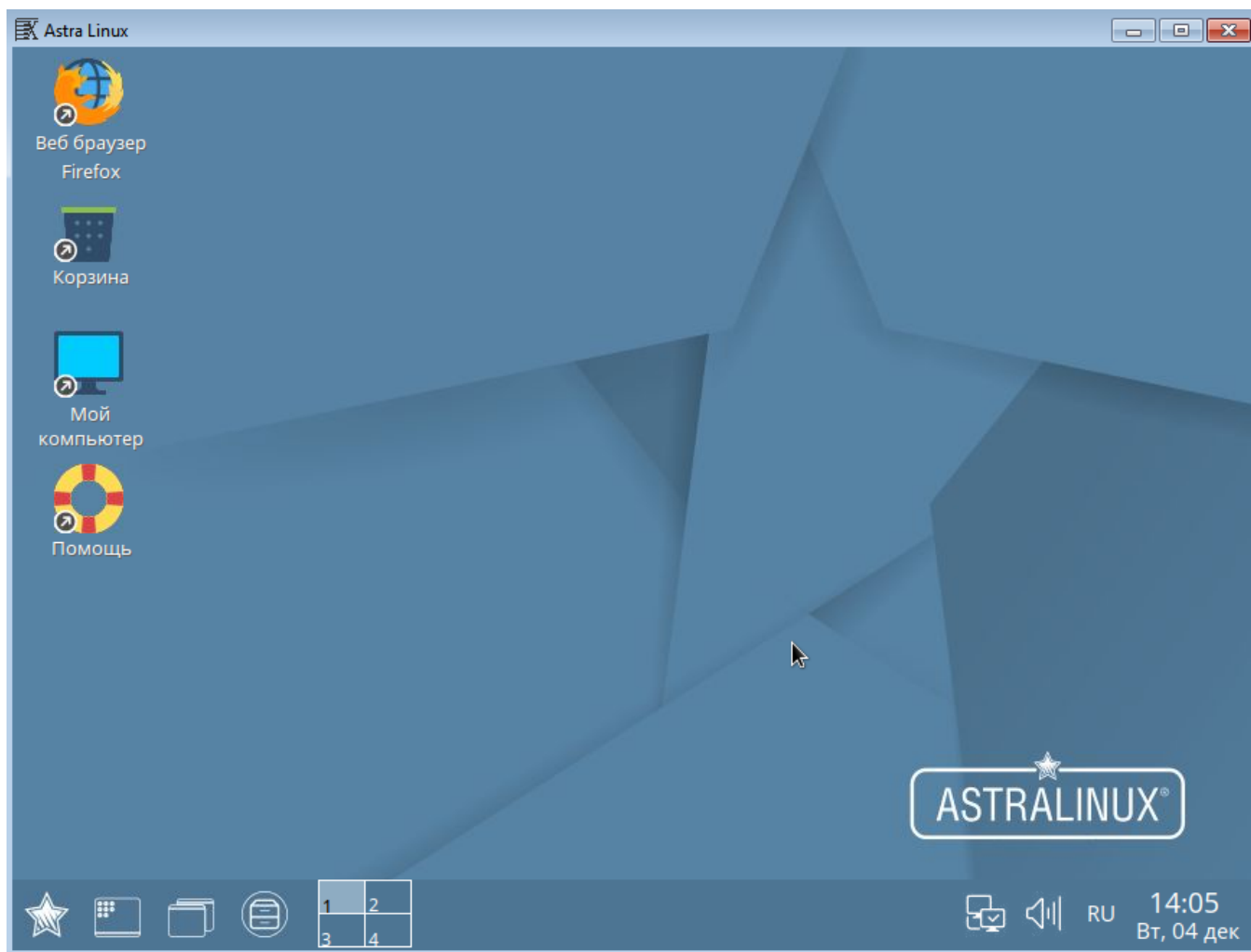
- " " : "fly-wm";
- "x2Go/X11 desktop sharing" (" ") (Astra Linux).

""

" "

:





x2go, . x2go "":

